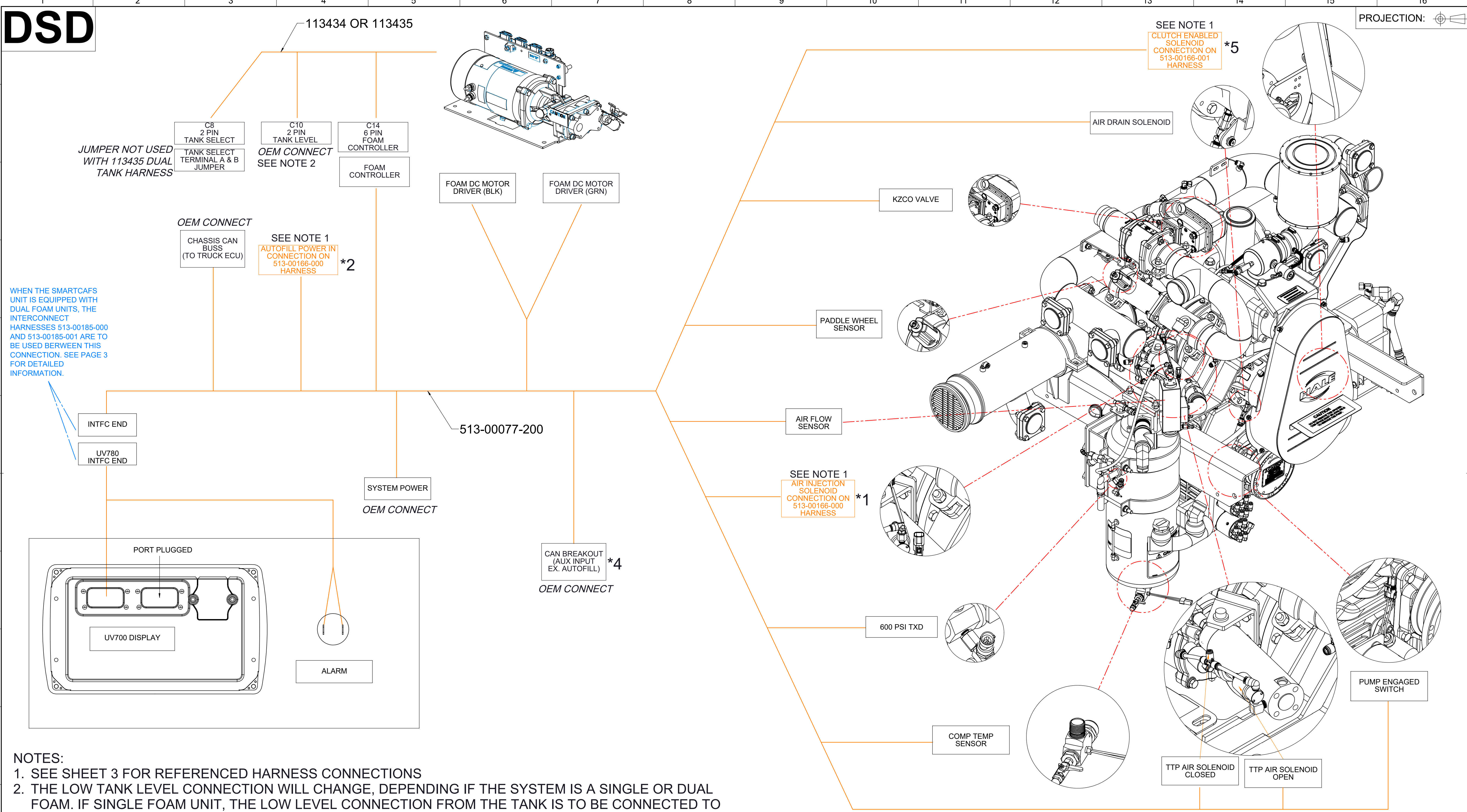






DSD

PROJECTION: 



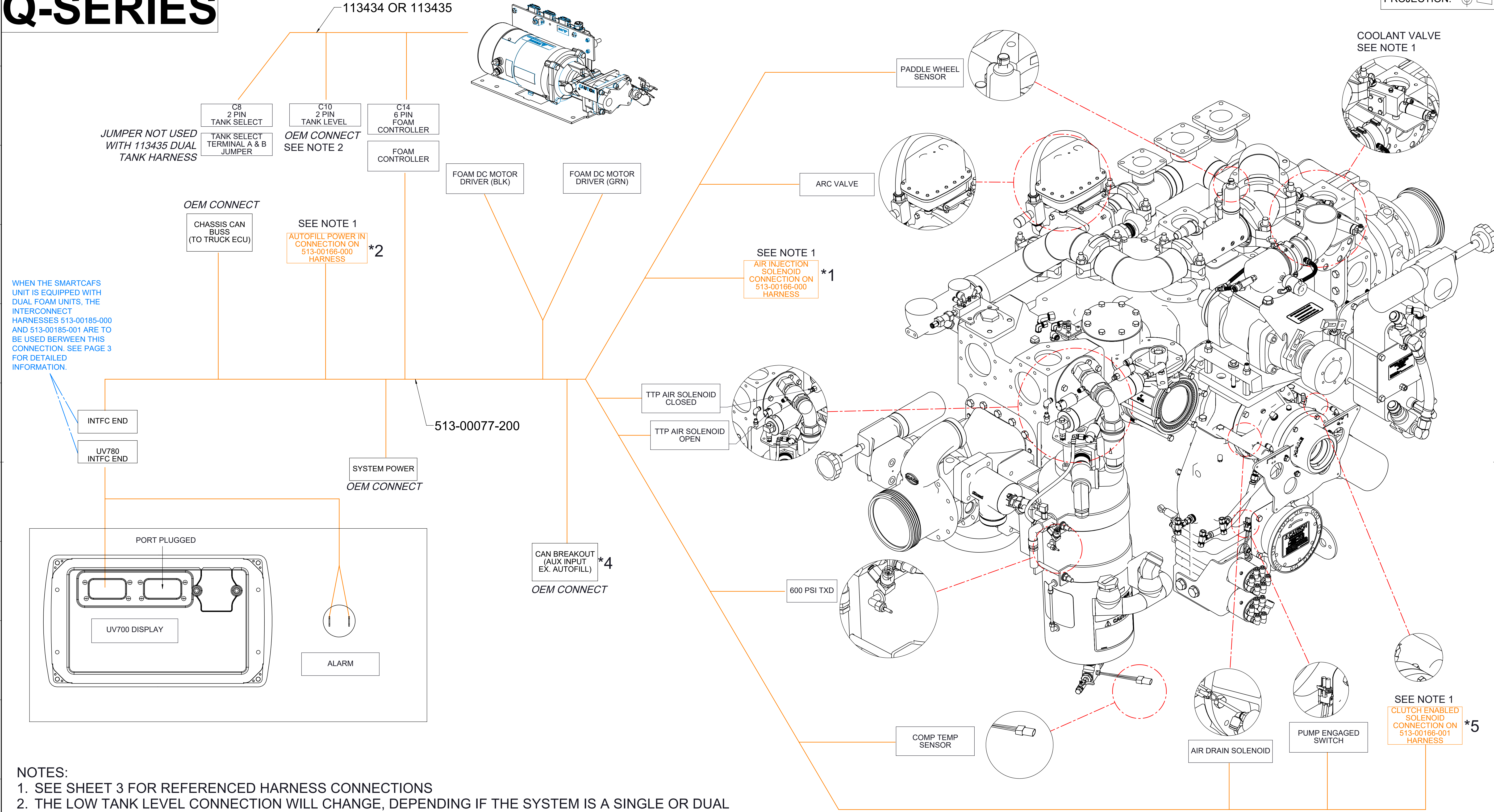
NOTES:
 1. SEE SHEET 3 FOR REFERENCED HARNESS CONNECTIONS
 2. THE LOW TANK LEVEL CONNECTION WILL CHANGE, DEPENDING IF THE SYSTEM IS A SINGLE OR DUAL FOAM. IF SINGLE FOAM UNIT, THE LOW LEVEL CONNECTION FROM THE TANK IS TO BE CONNECTED TO 113434 AS SEEN ON PAGE 1 AND PAGE 2 . IF DUAL FOAM UNITS, THEN THE LOW LEVEL IS TO BE CONNECTED TO THE 513-00185-001 SPLITTER HARNESS ON THE PUMP #2, AS SHOWN IN PAGE 3. IF DUAL FOAM AND DUAL TANKS, THE 513-00185-001 IS NOT USED AND THE LOW FLOWS ARE CONNECTED DIRECTLY TO TANK SENSOR.

REVISIONS						
ECN	REV.	ZONE	CHANGED FROM	BY	DATE	APVD
--	A	--	ORIGINAL RELEASE	JDF	22DEC2015	AS
5146	B		UPDATED SCHEMATIC FROM 513-00077-000 HARNESS, NEW DISTRIBUTION BOX ON FOAM UNIT, ADDED SHEET 3, ADDED DUAL FOAM INSTRUCTIONS	JS2	17JAN2019	AJG

UNLESS OTHERWISE SPECIFIED DIMENSIONS ARE IN MILLIMETERS [INCHES ARE FOR REFERENCE, ONLY] TOLERANCE FOR MILLIMETER DIMENSIONS: X: ±1 X.X: ±0.5 X.XX: ±0.25 X.XXX: ±0.125 ANGLES: ±0.25° SURFACE TEXTURE IN µm Ra REMOVE ALL SHARP EDGES, 0.25MAX		   	
MATERIAL		TITLE	
MADE FROM		SMARTCAFS INTERCONNECT UV700	
FINISH		DRAWN	JRH
PROJECT		APPROVED	AH
SMARTCAFS UV700		DATE	02FEB2015
SIZE		DRAWING NUMBER	REV
D		FSG-PL-01422	B
SCALE		SHEET	
1:2		1 OF 3	

Q-SERIES

PROJECTION:

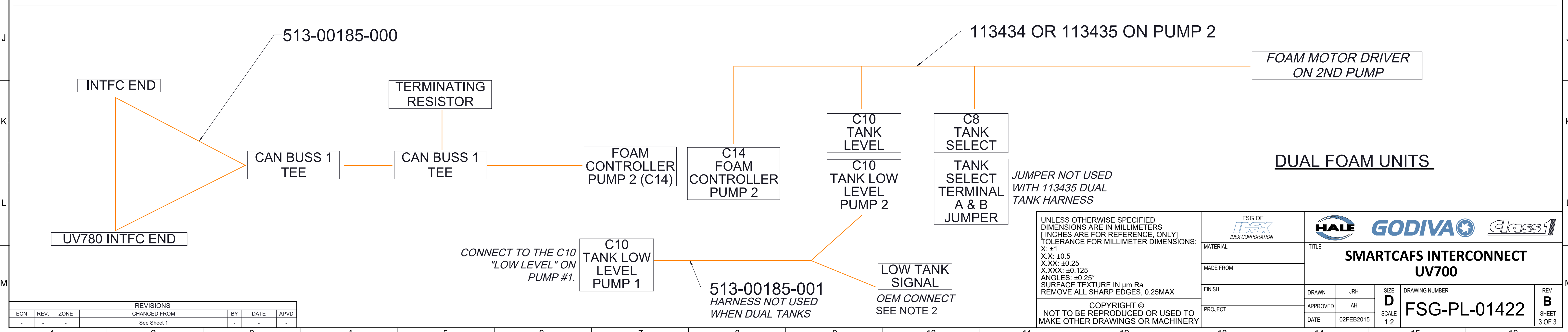
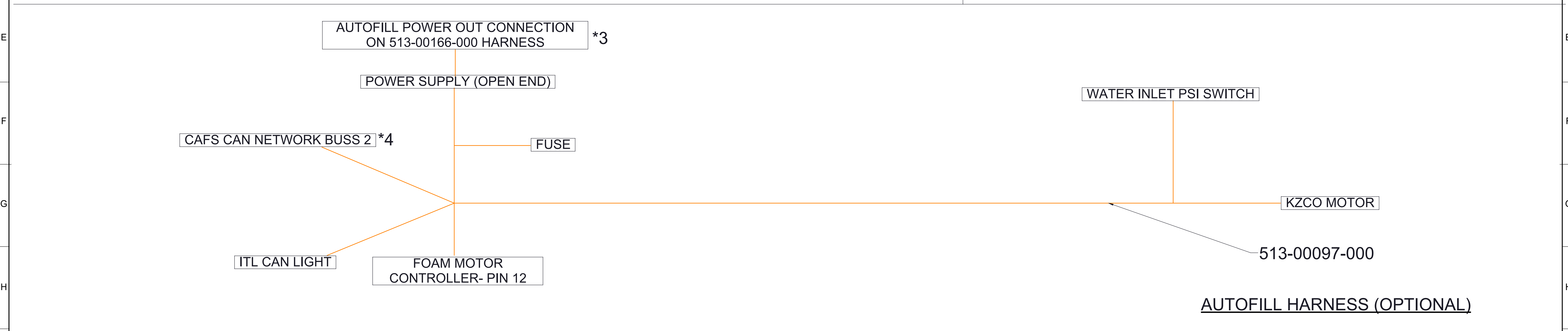
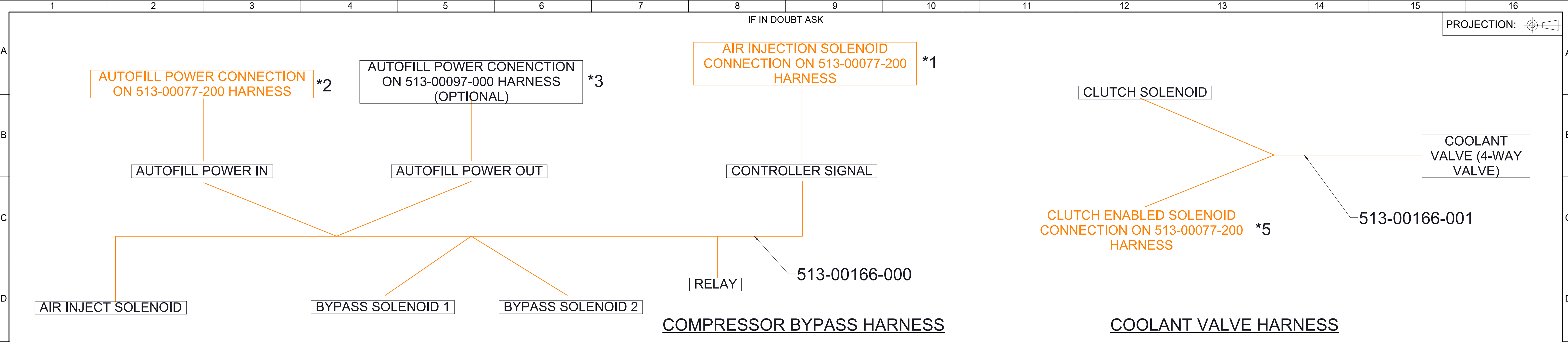


NOTES:

1. SEE SHEET 3 FOR REFERENCED HARNESS CONNECTIONS
2. THE LOW TANK LEVEL CONNECTION WILL CHANGE, DEPENDING IF THE SYSTEM IS A SINGLE OR DUAL FOAM. IF SINGLE FOAM UNIT, THE LOW LEVEL CONNECTION FROM THE TANK IS TO BE CONNECTED TO 113434 AS SEEN ON PAGE 1 AND PAGE 2 . IF DUAL FOAM UNITS, THEN THE LOW LEVEL IS TO BE CONNECTED TO THE 513-00185-001 SPLITTER HARNESS ON THE PUMP #2, AS SHOWN IN PAGE 3. IF DUAL FOAM AND DUAL TANKS, THE 513-00185-001 IS NOT USED AND THE LOW FLOWS ARE CONNECTED DIRECTLY TO TANK SENSOR.

UNLESS OTHERWISE SPECIFIED DIMENSIONS ARE IN MILLIMETERS [INCHES ARE FOR REFERENCE, ONLY] TOLERANCE FOR MILLIMETER DIMENSIONS: X: ±1 X.X: ±0.5 X.XX: ±0.25 X.XXX: ±0.125 ANGLES: ±0.25° SURFACE TEXTURE IN µm Ra REMOVE ALL SHARP EDGES, 0.25MAX		 	
MATERIAL		TITLE SMARTCAFS INTERCONNECT UV700	
MADE FROM		DRAWN: JRH	
FINISH		APPROVED: AH	
PROJECT: SMARTCAFS UV700		DATE: 02FEB2015	
COPYRIGHT © NOT TO BE REPRODUCED OR USED TO MAKE OTHER DRAWINGS OR MACHINERY		SIZE: D	
		DRAWING NUMBER: FSG-PL-01422	
		SCALE: 1:2	
		REV: B	
		SHEET 2 OF 3	

REVISIONS					
ECN	REV.	ZONE	CHANGED FROM	BY	DATE
-	-	-	SEE SHEET 1		



REVISIONS						
ECN	REV.	ZONE	CHANGED FROM	BY	DATE	APVD
-	-	-	See Sheet 1	-	-	-

UNLESS OTHERWISE SPECIFIED DIMENSIONS ARE IN MILLIMETERS [INCHES ARE FOR REFERENCE, ONLY] TOLERANCE FOR MILLIMETER DIMENSIONS:
 X: ±1
 X.X: ±0.5
 X.XX: ±0.25
 X.XXX: ±0.125
 ANGLES: ±0.25°
 SURFACE TEXTURE IN µm Ra REMOVE ALL SHARP EDGES, 0.25MAX

COPYRIGHT © NOT TO BE REPRODUCED OR USED TO MAKE OTHER DRAWINGS OR MACHINERY

FSG OF IDEXX CORPORATION		HALE GODIVA Class 1	
MATERIAL	TITLE SMARTCAFS INTERCONNECT UV700		
MADE FROM	DRAWN	JRH	SIZE D
FINISH	APPROVED	AH	SCALE 1:2
PROJECT	DATE	02FEB2015	DRAWING NUMBER FSG-PL-01422
			REV B SHEET 3 OF 3