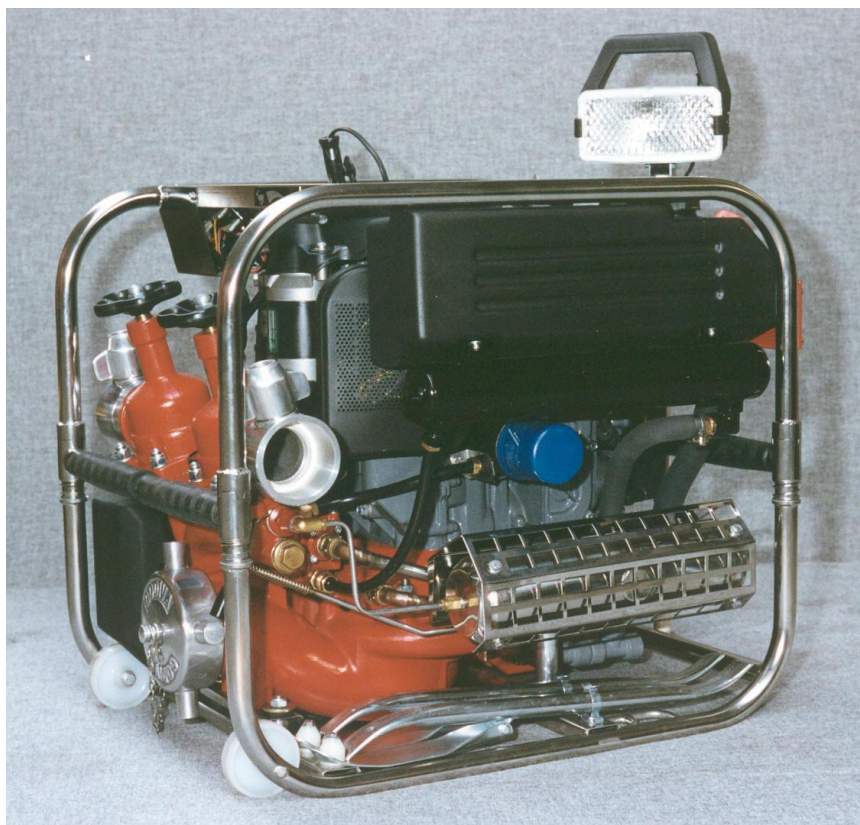





GODIVA **GP10/10 Portable Pump** **Spare Parts Manual**



 **Godiva Ltd.**
A Unit of IDEX Corporation
Charles St
Warwick
CV34 5LR
England

 **+44 (0)1926 623600**

 **+44 (0)1926 623666**

 **www.godiva.co.uk**
godiva@idexcorp.com

GP/080/094 Issue 8, November 2015.

AMENDMENT RECORD

Model: PowerFlow 10/10 Portable Fire Pump

Mod	Date	Page/s	Amendment	New Issue No.
4	April 2006	A5	Item 2 - Change part number from MS164/16 to MS16H/16	Issue 4
5	Oct 2010	A15/A17	Add parts for GP10/10/59 spec.	Issue 5
6	Oct 2010	All	Change name from Hale Products Europe to Godiva Ltd.	Issue 5
7	Oct 2010	A17	Battery part number changed from 53627 to 58462	Issue 6
8	Feb 2010	A7	Add part no. 56125/04 priming valve gunmetal assembly	Issue 7
9	Nov 2015	A12/A13	Item 4 – correct number is 56532	Issue 8

Please Note:

RECOMMENDED SPARES

Thank you for choosing a GODIVA Fire Pump – designed and built to provide many years of trouble-free service.

Whilst we consider it to be the very best fire pump available today, we also recognise that any 'rotating' machinery is subject to wear and therefore we feel it necessary to bring to your attention our 2-years' Recommended Spares Listing – at the back of Part A for the PUMP and at the back of Part B for the ENGINE – in this book.

This stock-holding will enable you to maintain your pump in cases where minor defects occur and will also minimise any possibility of the pump being 'off-the-run' for extended periods of time.

PORTABLE PUMPS

SAFETY RELEVANT DATA

Thank you for purchasing a Godiva pump.

Godiva Portable Pumps are designed to give safe and reliable service – however, BEFORE operation it is essential that the Operating Instructions are carefully read and understood.

A risk assessment of the pump has been conducted with the following results:

MAINTENANCE

It is the responsibility of the user to ensure that the equipment is maintained in a safe operational condition, as per regulation 5 in the Provision and Use of Work Equipment Regulations 1998.

TRAINING

It is essential that Godiva pumps are operated **ONLY** by **TRAINED PERSONNEL**.

ENGINE

When using Godiva pumps driven by a petrol-powered engine, the following safety points must be observed:

- DO NOT OPERATE the unit close to flammable materials or structures.
- Keep ALL UNTRAINED people AWAY from the unit during operation.
- PETROL is extremely flammable and MUST be HANDLED WITH CARE.
- DO NOT REFUEL until the engine is cold.
- DO NOT OVERFILL the fuel tank. After refuelling ENSURE that the fuel cap is refitted.
- DO NOT refuel whilst smoking or allow sparks or flames into the refuelling area.
- Be careful NOT TO SPILL fuel; if any fuel is spilled, ensure that the area is dry BEFORE starting the engine.
- DO NOT run the engine in an enclosed area as poisonous gases are given off which can cause injury.
- The exhaust system becomes VERY HOT during operation and REMAINS HOT for a long time AFTER the engine has been stopped. DO NOT TOUCH the exhaust whilst the engine is hot.
- The starting system is driven by battery. Always connect the battery positive (+ve) cable BEFORE the negative (-ve) and disconnect the negative BEFORE the positive.
- Batteries produce EXPLOSIVE GASES so keep sparks, flames and cigarettes away.

NOISE

When running, the engine-driven portable pump is noisy so EAR PROTECTION IS NECESSARY.

MANUAL HANDLING

The Godiva Portable Pump design incorporates suitable lifting handles or points.

A manual-handling sheet is provided with each model.

The secondary starting method (hand-start) provided **MUST BE USED WITH CARE**. Follow the operating instructions provided.

S. Tudor
Engineering Manager

February 2001

PLEASE READ CAREFULLY BEFORE ORDERING ANY SPARE PARTS:

TO ORDER SPARE PARTS

ALWAYS QUOTE

1. The engine Serial Number AND the Pump Serial Number as identified on the unit.
2. The Item Number, Part Number and the Description as given in this parts list.

The Company cannot accept responsibility for parts not ordered in accordance with these instructions

GENERAL NOTES

1. PAYMENT

In the absence of an approved account, goods will be invoiced 'Pro-Forma' or sent C.O.D.. Delivery is Ex-Works, carriage and packing being extra.

2. DAMAGE

The Company does not hold itself responsible for goods lost or damaged in-transit. All packages should be signed for on receipt as "unexamined". In the event of loss or damage, a claim should be made on the carrier without delay.

3. PARTS CLAIMED TO BE DEFECTIVE AND REPLACEABLE UNDER GUARANTEE

Such parts must be returned to the Work, carriage paid, for examination. The DATE OF DELIVERY AND SERIAL NUMBERS MUST ALWAYS BE GIVEN. Cost of carriage and of any work entailed in refitting replacement parts is chargeable to the claimant.

4. PATTERNS

If there is any doubt, send the old parts as patterns. Such patterns must be CLEARLY LABELLED, indicating the Sender's name and address.

If the patterns are to be returned, they must be marked accordingly, otherwise they will be scrapped.

5. WARNING

It is of the greatest importance that only genuine spare parts supplied by Godiva Limited are used, otherwise the guarantee will be null and void.

6. All sales are made subject to the Company's Standard Conditions of Sale in force at the time of the sale.

HOW TO USE THE SPARE PARTS LIST

Select the appropriate group for the part required e.g. 'EXHAUST GAS EJECTOR'. Refer to the illustration to identify the particular part and note the 'Item No.' – this can be found in the parts list opposite – along with the appropriate 'Part No.', 'Description' and Quantity 'Qty' to enable an order to be correctly placed.

ASSOCIATED PUBLICATIONS

Publication	Number
Operating Manual	GP/078/94
Workshop Manual	GP/079/94

PART A

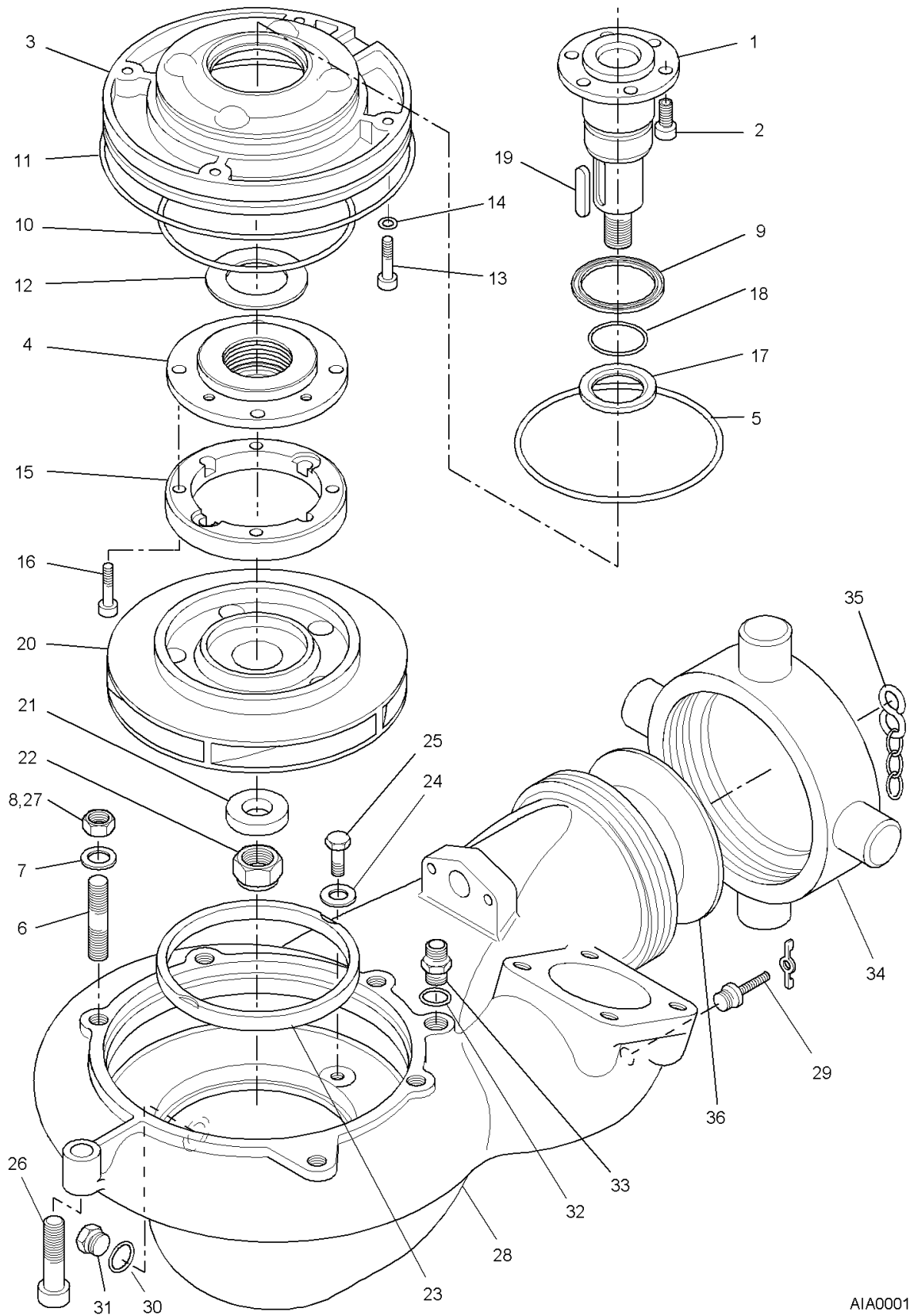
PUMP

Intentionally left blank

CONTENTS

SECTION	PAGE
PUMP	4
PRIMING VALVE	6
EXHAUST GAS EJECTOR.....	8
COOLING SYSTEM.....	10
FUEL TANK	12
INSTRUMENTS AND CONTROLS.....	14
ELECTRICS – PUMP	16
CRADLE AND MOUNTINGS.....	18
WHEELBARROW ASSEMBLY	20
DELIVERY VALVES	22
DELIVERY MANIFOLD.....	24
FLOODLIGHT	26
LABELS AND INSTRUCTION PLATES.....	28
RECOMMENDED SPARES – PUMP	31

PUMP



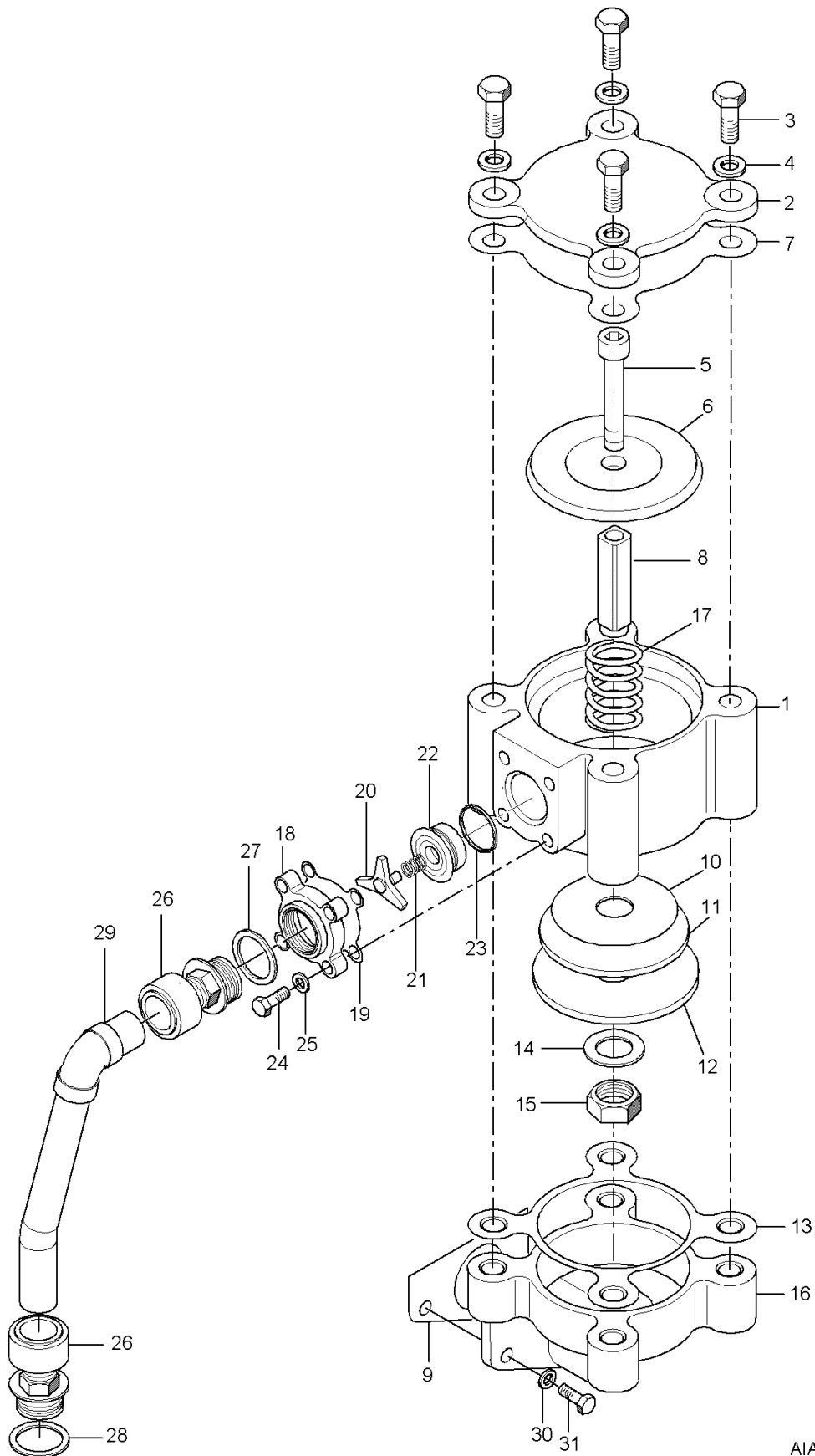
AIA0001

A4

PUMP

Item No.	Part No.	Description	Qty	Remarks
1	55823/01	Pump drive shaft	1	
2	MS64H/16	Screw M8, socket-head	6	
3	55697/02	Seal housing	1	
4	55824/01	Carbon seal assembly	1	
5	55831	'O' ring	1	
6	MS149/35	Stud M10	5	Volute-to-adaptor housing
7	MS25/10	Washer M10	5	
8	MS35/9	Nut M10	4	
9	56183	Seal, double lip	1	
10	55830	'O' ring	1	
11	55832	'O' ring	1	
12	55825	Flinger ring	1	
13	MS163/25	Screw M6, socket-head	4	
14	MS133/6	Dowty seal	4	
15	56091	Upper wear ring	1	
16	MS163/25	Screw M6, socket-head	4	
17	55826/01	Spacer ring	1	
18	52814	'O' ring	1	
19	MS180/3	Key	1	Impeller-to-shaft
20	55735/01	Impeller	1	
21	56187	Washer, impeller	1	
22	53729	Nut, impeller	1	
23	56070/01	Lower wear ring	1	Wear ring - retaining
24	56182	Washer	2	
25	MS104/12	Screw M6	2	
26	MS165/45	Screw M10, socket-head	1	Volute-to-adaptor housing
27	56499	Extended nut M10	1	
28	55696	Volute 4" R.T.	1	
-	55696/02	Volute 4 1/2" BSP	1	
29	52119	Drain tap, volute	1	
30	UFP2303/5	Sealing washer 1/4in. BSP	1	Plug
31	S64/2	Plug 1/4in. BSP	1	
32	UFP2303/5	Sealing washer 1/4in. BSP	1	Union
33	56403	Union 1/4in. BSP	1	
34	FWP2004	Blank cap (4" R.T.)	1	
35	FWP1062	Chain, blank cap	1	
36	52125/01	Suction strainer 4in.	1	

PRIMING VALVE



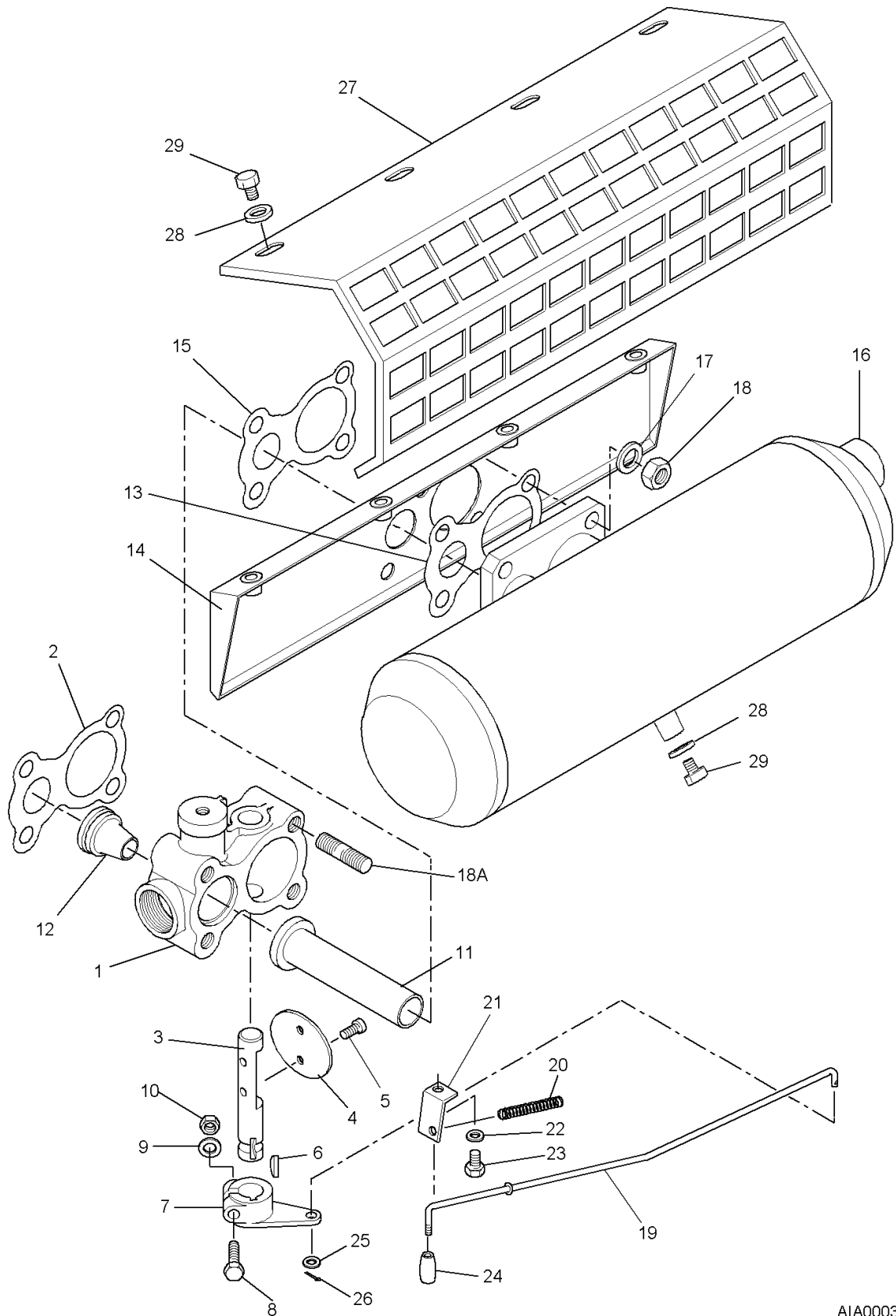
AIA0002

A6

PRIMING VALVE

Item No.	Part No.	Description	Qty	Remarks
-	56125/03	Priming valve assembly Aluminium	1	Complete assembly Items 1-25, excluding 9
-	56125/04	Priming valve assembly Gunmetal	1	
1	56119	Body - aluminium	1	Diaphragm cover-to- priming valve assembly
-	56119/02	Body - gunmetal	1	
2	56120	Diaphragm cover	1	
3	MS16/60	Bolt M6	4	
4	MS25/7	Washer M6	4	
5	MS163/50	Screw M6, socket-head	1	
6	55666	Thrust pad	1	
7	56123	Diaphragm	1	
8	55665	Spacer	1	Between thrust pad and seal-support washer
9	56128	'O' ring	1	Between outlet valve and priming-valve body
10	55668	Seal retaining washer	1	Inlet housing-to-priming valve body
11	55669	Seal washer	1	
12	55670	Seal-support washer	1	
13	56124	Inlet gasket	1	
14	MS125/7	Washer M6	1	For seal support
15	MS141/4	Nut M6, self-locking	1	
16	56121	Inlet housing – aluminium	1	
-	56121/04	Inlet housing - gunmetal	1	Between thrust pad and priming-valve body
17	57555	Spring	1	
18	56122	Outlet housing – aluminium	1	Outlet housing-to- priming valve body
-	56122	Outlet housing - gunmetal	1	
19	56127	Outlet gasket	1	Over Item 20
20	56378	Spring locator	1	
21	THC2198	Spring	1	Outlet housing-to- priming valve body
22	THC2194	Valve	1	
23	THA123/118	'O' ring	1	Priming valve-to-suction tube
24	MS162/20	Screw M5, socket-head	4	
25	MS25/6	Washer M5	4	Priming valve-to-suction tube
26	55873	Straight coupler assembly	2	
27	UFP2303/8	Sealing washer 1/2in. BSP	1	Priming valve-to-suction tube
28	S41/10	Sealing washer (soft copper)	1	
29	55829	Priming pipe	1	Priming valve-to-suction tube
30	MS25/7	Washer M6	2	
31	MS163/30	Screw M6, cap-head	2	

EXHAUST GAS EJECTOR



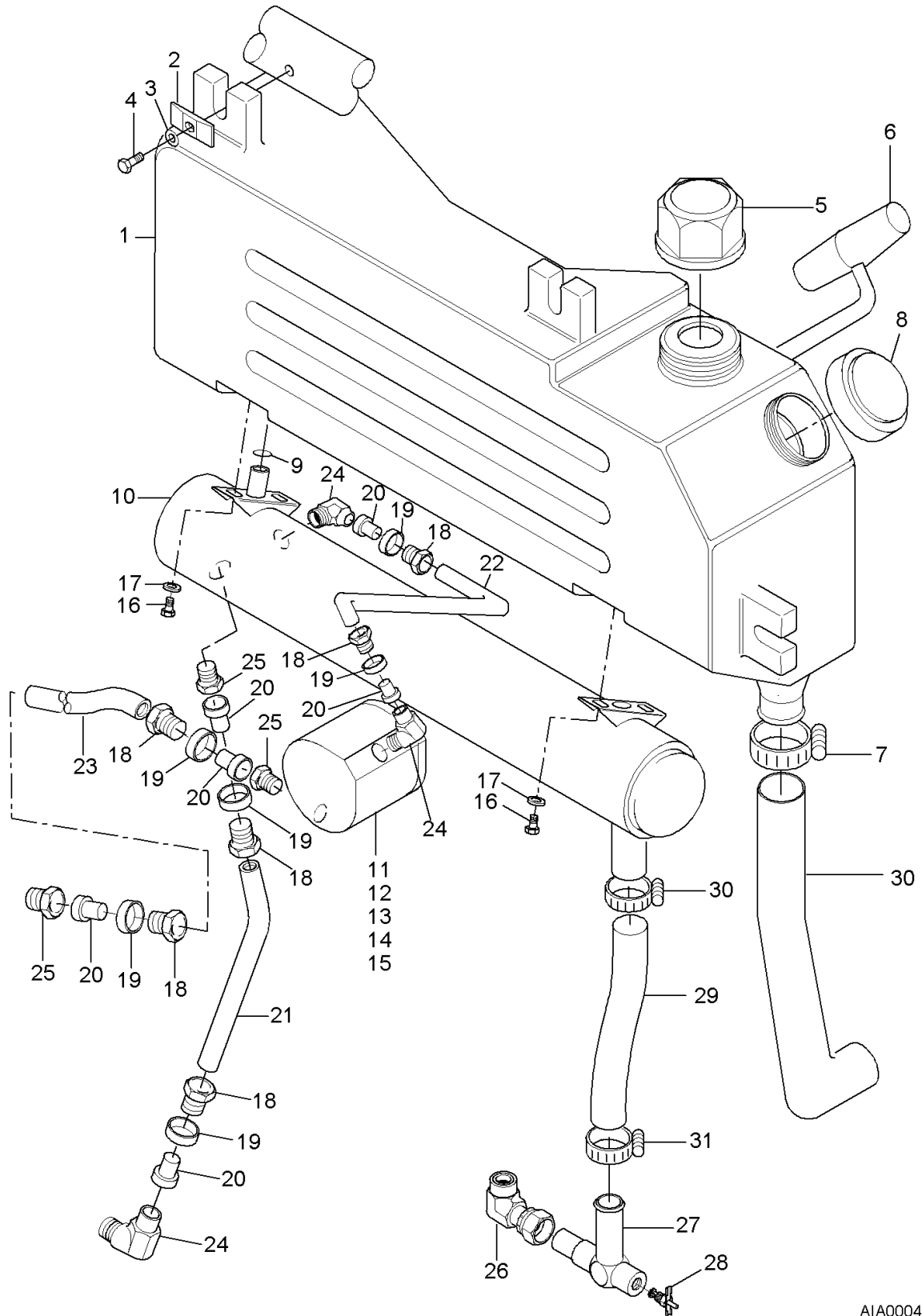
AIA0003

A8

EXHAUST GAS EJECTOR

Item No.	Part No.	Description	Qty	Remarks
1	55737/01	Primer ejector housing	1	
2	55844	Gasket	1	Exhaust flange
3	GPR11743/1	Shaft butterfly	1	
4	GPR11742	Butterfly valve	1	
5	MS171/48	Screw M5, cheese-head	2	Valve to shaft
6	S25/3	Woodruff key	1	
7	FWMB1160/3	Operating lever	1	
8	MS16/35	Bolt M6	1	} Operating lever to shaft
9	MS25/7	Washer	1	
10	MS39/4	Nut M6	1	
11	55738	Primer ejector diffuser	1	
12	FWP1089/3	Ejector nozzle	1	
13	55844	Gasket	1	Ejector to heat shield
14	56174	Inner heat shield	1	
15	55844	Gasket	1	Heat shield to silencer
16	55739/01	Silencer	1	
17	MS26/9	Washer	4	} Silencer to ejector
18	MS35/8	Nut M8	4	
18A	MS148/50	Stud	4	Silencer to ejector housing
19	55846	Primer operating rod	1	
20	GPS11745	Compression spring	1	Primer rod return
21	56207	Guide bracket	1	Primer rod
22	MS25/9	Washer M8	1	Bracket to
23	MS05/12	Screw M8	1	delivery manifold
24	52855	Handle	1	
25	MS27/3	Washer M6	1	
26	S31/C5	Split pin	1	
27	56173	Outer heat shield	1	
28	MS127/3	Washer M6	5	} Heat shields to silencer
29	MS104/10	Screw M6	5	

COOLING SYSTEM

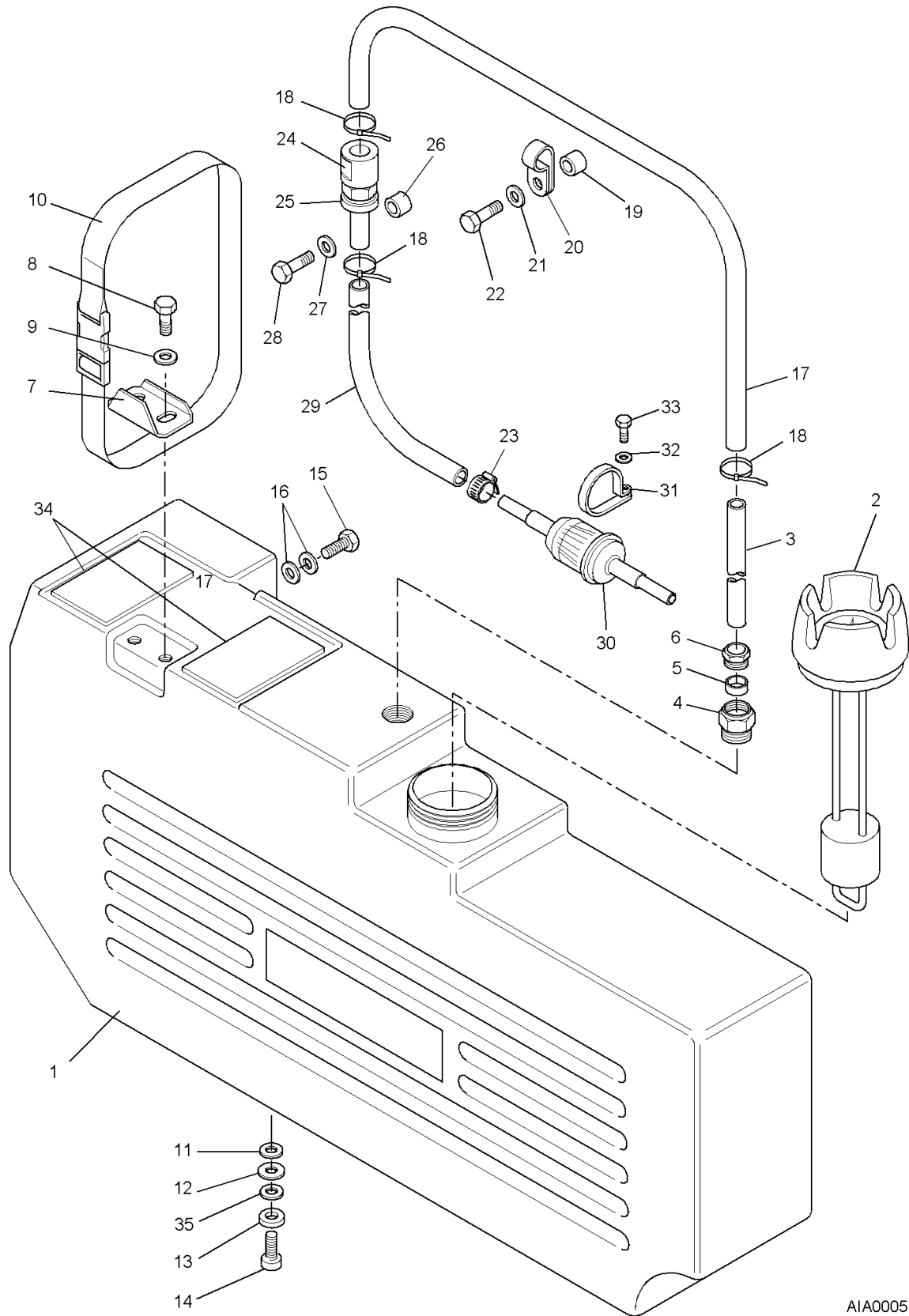


AIA0004

COOLING SYSTEM

Item No.	Part No.	Description	Qty	Remarks
1	55752	Header tank	1	
2	56341/01	Clamp washer	3	
3	MS127/3	Washer M6	3	
4	MS116/40	Screw M6	3	
5	57447	Filler cap, coolant	1	
6	55800/70	Starter rope	1	
7	MS82/5	Hose clip	2	
8	56096	Threaded cap, rope compartment	1	
9	55755/02	'O' ring	1	Header tank-to-heat-exchanger
10*	57587	Heat exchanger	1	
11	57560	Oil cooler	1	
12	57590	'O' ring	1	
13	57563	Plate	1	
14	57564	Nut	1	
15	56170	'O' ring	1	
16	MS63/16	Screw M6, socket-head	4	
17	MS25/7	Washer M6	4	
18	51171	Tubing nut	6	
19	51170	Sleeve	6	
20	60405	Tube insert	6	
21	56221/03	Nylon tubing 12mm dia. x 0,330m	1	
22	56491/03	Formed tube 0,230m	1	
23	56491/01	Formed tube 0.235m	1	
24	56284	Elbow adaptor	3	12mm to 3/8in. BSP
25	56289	Straight adaptor	3	12mm to 3/8in. BSP
26	56000	Elbow 15mm to 1/2in. BSP	1	
27	56309	Tee-piece assembly	1	
28	52119	Drain tap, volute	1	
29	57264/01	Hose, silicone rubber 15mm	1	
30	56306	Hose, silicone rubber 22mm	1	
31	MS82/1	Hose clip	2	
10*	Also available – Heat exchanger replacement kit – Part No. 57670, includes items 10, 18, 19, 21, 22, 24, 25 and instruction sheet DS537			

FUEL TANK



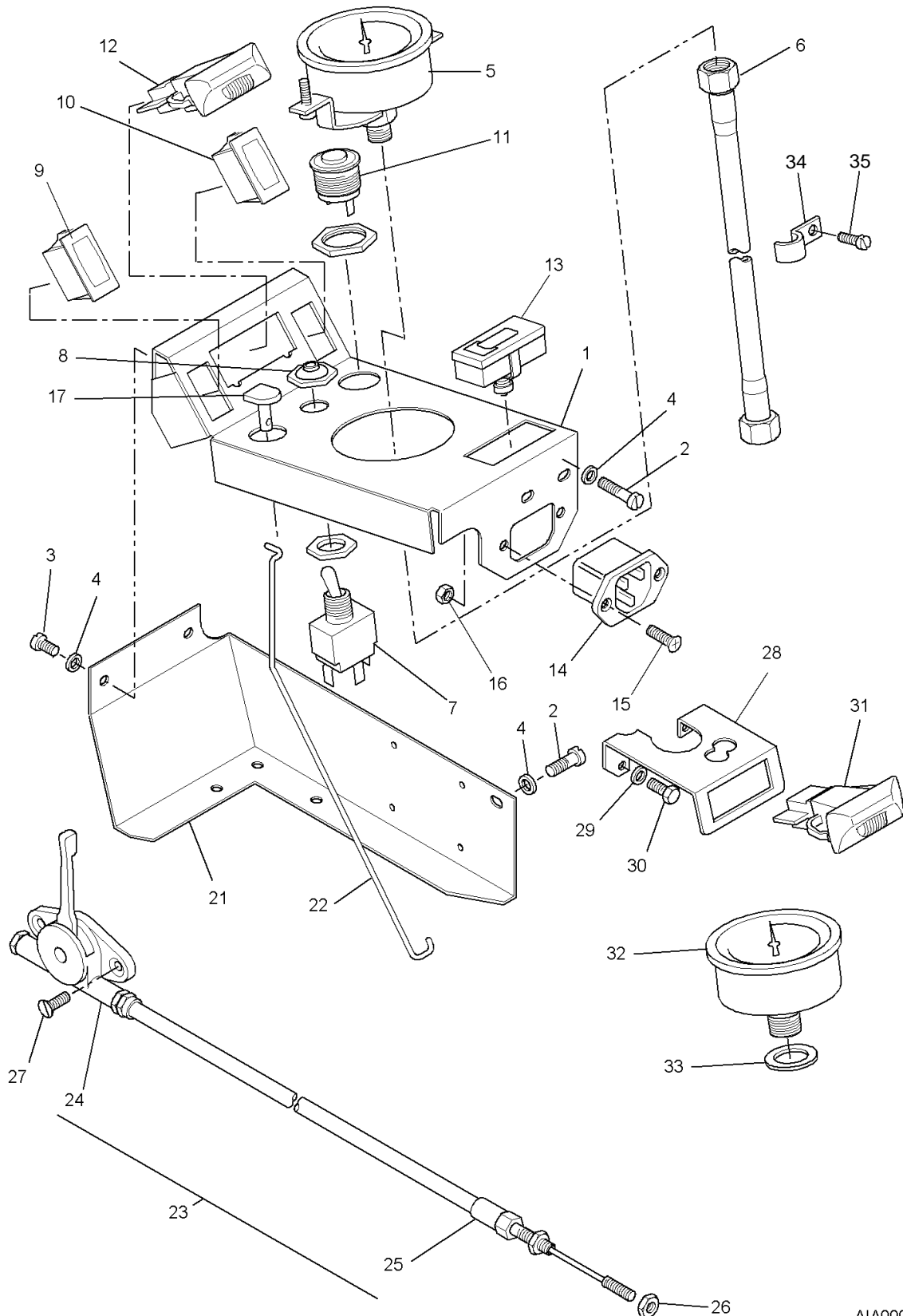
AIA0005

A12

FUEL TANK

Item No.	Part No.	Description	Qty	Remarks
1	55757	Fuel tank	1	
2	55881/01	Fuel gauge & cap	1	
3	56531	Fuel suction pipe	1	
4	56532	Male adaptor	1	
5	GPN12354	Tubing sleeve 8mm	1	
6	GPN12353	Tubing nut 8mm	1	
7	56142/02	Retaining bracket, battery	1	
8	MS04/12	Screw M6	2	} Bracket to tank
9	MS25/7	Washer M6	2	
10	57048	Retaining strap, battery	1	
11	MS127/3	Washer M6	4	
12	56224/01	Rubber washer	4	
13	56223/02	Washer	4	
14	MS163/20	Screw M6, socket-head	4	
15	MS04/16	Screw M6	1	} Battery strap to fuel tank
16	MS27/3	Washer M6	2	
17	56518	Fuel pipe (36cm)	1	
18	9993	Tie, nylon insuloid	3	
19	56167/01	Spacer	1	
20	53708/03	Clip, conduit	1	
21	MS25/7	Washer M6	1	
22	MS16/30	Bolt	1	
23	MS81/1	Hose clip	2	
24	55800/51	Connector A, fuel hose	1	
25	55800-50	Connector B, fuel hose	1	
26	55800/52	Collar 6mm	1	In Connector B
27	MS25/7	Washer M6	1	
28	MS04/20	Screw M6	1	
29	56518/01	Fuel pipe	1	
30	56088	Fuel filter, in-line	1	
31	56089	Clip, fuel filter	1	
32	MS25/4	Washer M4	1	} Fuel filter clip to fuel pump
33	MS02/20	Screw M4	1	
34	56539	Self adhesive foam	2	
35	MS127/3	Washer M6 - large, heavy	4	

INSTRUMENTS AND CONTROLS



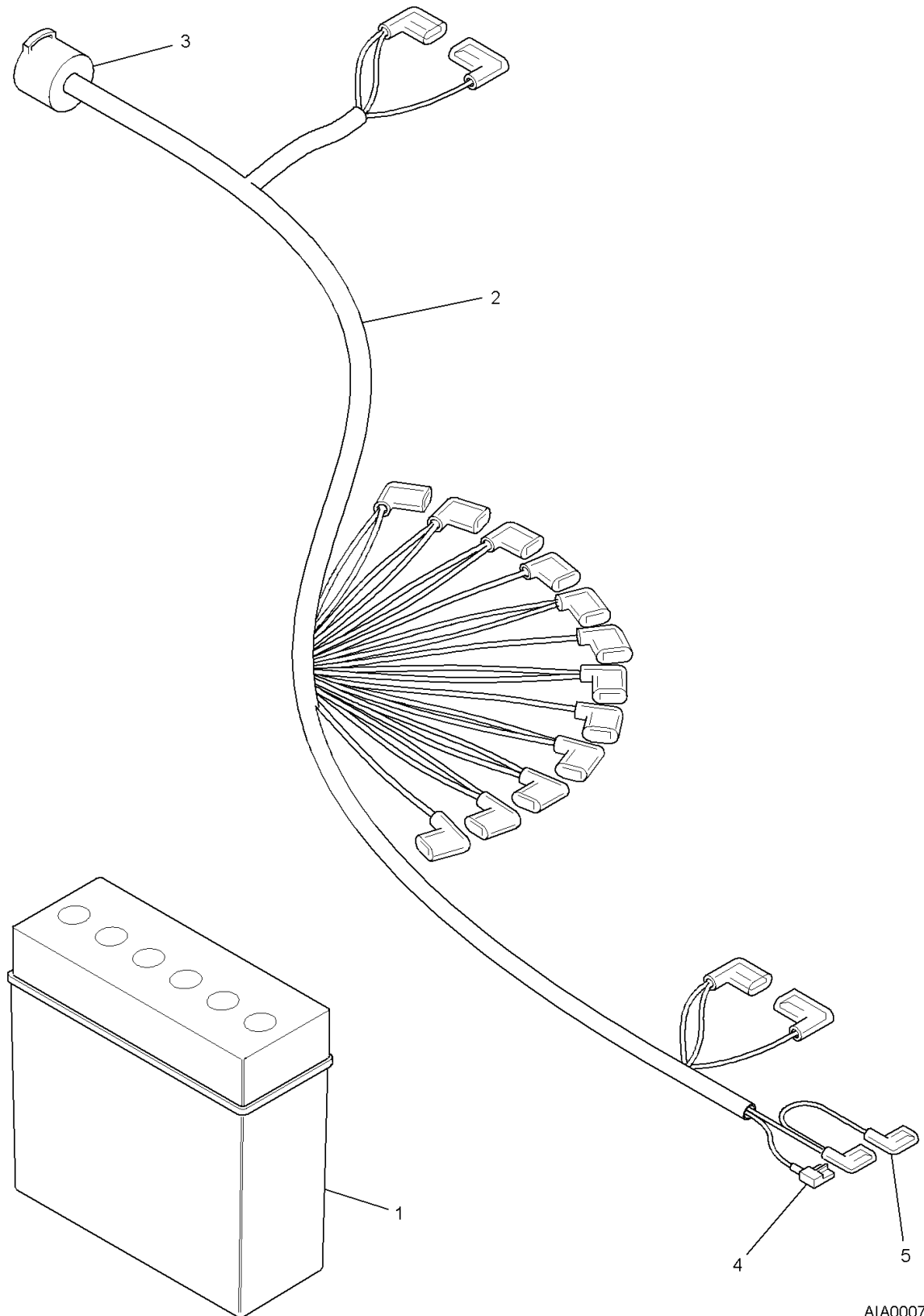
AIA0006

A14

INSTRUMENTS AND CONTROLS

Item No.	Part No.	Description	Qty	Remarks
1	55911/05	Instrument panel	1	
2	MS171/48	Screw M5, cheese-head	3	} Instrument panel-to-cradle
3	MS171/55	Screw M5, cheese-head	2	
4	MS125/6	Washer M5	5	
5	56556	Compound gauge	1	
6	55891	Gauge-pipe assembly	1	
7	56342	Ignition switch	1	
8	FWMP7522	Seal, ignition switch	1	
9	56361	Warning lamp, oil pressure	1	
10	56361/01	Warning lamp, coolant temperature	1	
11	56362/01	Starter switch, push-button	1	
12	57798MA	Panel lamp, gauge illumination	1	
13	55871/01	Hours meter	1	
14	51594	Socket floodlight/battery-charging	1	
15	MS72/30	Screw M3, countersunk	2	
16	MS35/4	Nut M3	2	
17	55800/40	Choke knob	1	
18	55800/41	Guide, choke knob	1	Not shown
19	56040	Open grommet	1	Not shown
20	56041	'O' ring	1	Not shown
21	56245	Guard	1	
22	56112	Choke-operating rod	1	
23	56118	Throttle-cable assembly	1	Comprises Items *
24	53670/03	Throttle control	1	*
25	56117	Throttle-cable sub-assembly	1	*
26	MS135/6	Nut M6	1	
27	MS172/49	Screw M5, countersunk	2	
28	55892/01	Illuminating-lamp bracket	1	
29	MS25/7	Washer M6	1	} Bracket-to-engine
30	MS04/12	Screw M6	1	
31	57798MA	Illuminating-lamp, pressure gauge	1	
32	56557	Pressure gauge 0-25 bar	1	
33	50470	Washer	1	
34	56572	Tubing clip	1	
35	MS171/48	Screw M5, cheese-head	1	
<i>For Pump GP10/10/59 the following parts apply -</i>				
1	55911/07	Instrument panel	1	
21	56245/01	Guard	1	
-	57982	Water temperature gauge	1	
-	57983	Oil temperature gauge	1	

ELECTRICS – PUMP



AIA0007

A16

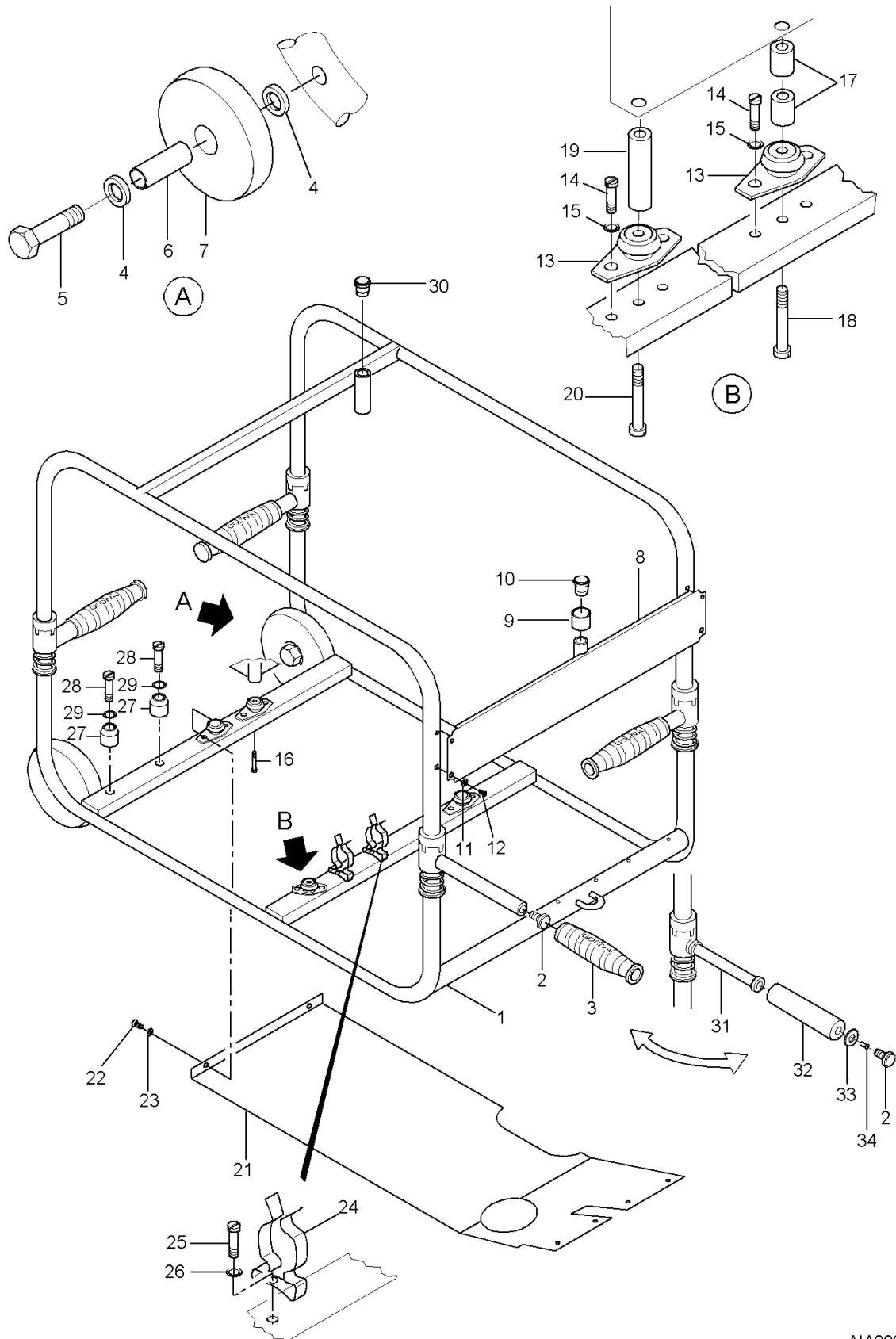
ELECTRICS - PUMP

Item No.	Part No.	Description	Qty	Remarks
1	58462	Battery	1	
2	55890/01	Wiring harness	1	
3	55800/62	Multi-pin plug	1	
-	56461	Loose pins	7	
-	56485	Terminal seal	6	Multi-pin plug
-	56486	Blanking plug	8	
4	56903	Flag Terminal	1	
5	56904	Terminal sleeve	1	

For Pump GP10/10/59 the following parts apply –

2	55890/04	Wiring harness	1	
---	----------	----------------	---	--

CRADLE AND MOUNTINGS



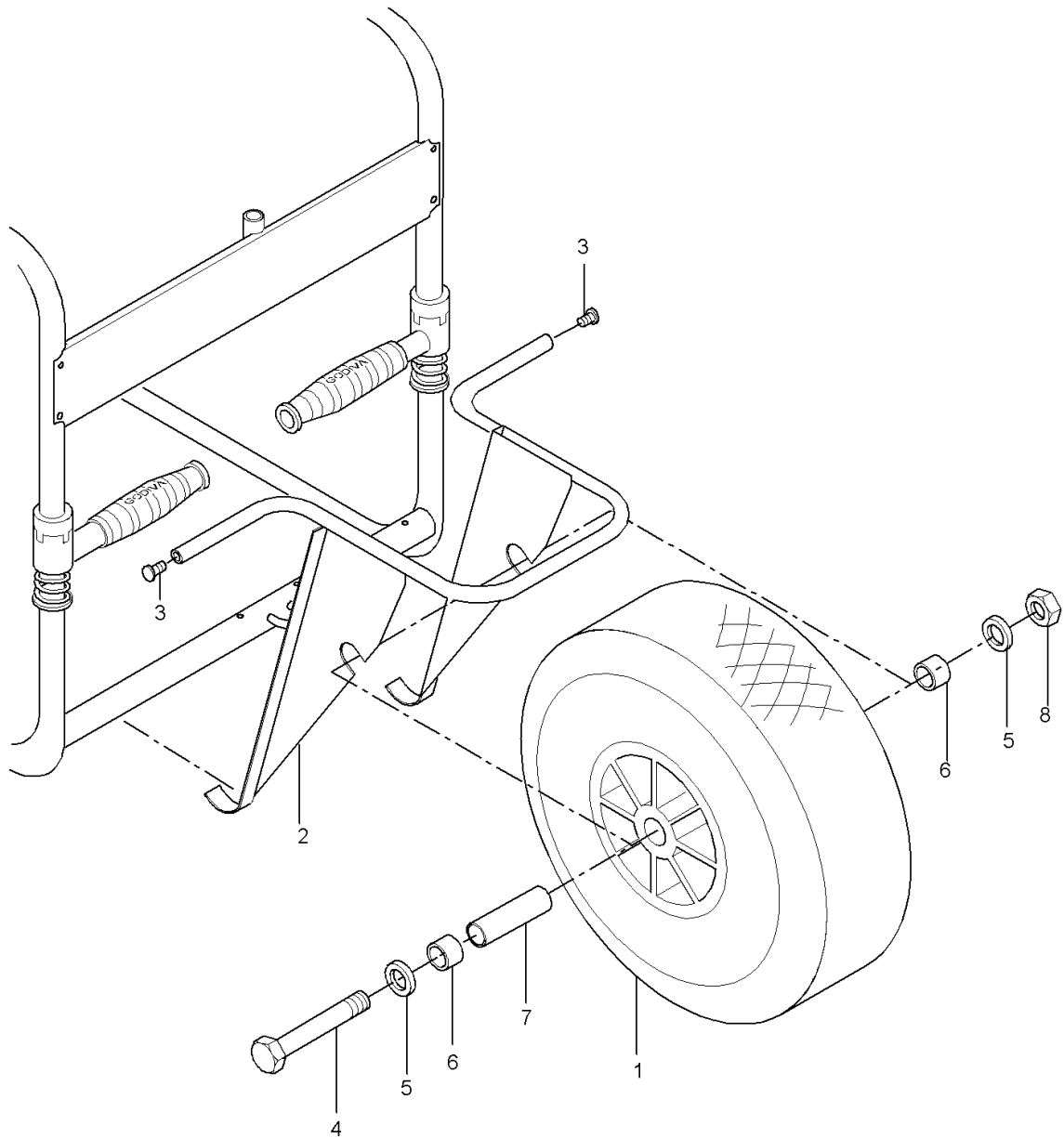
AIA0008

A18

CRADLE AND MOUNTINGS

Item No.	Part No.	Description	Qty	Remarks
1	55689/02	Cradle	1	
2	50471/01	Blanking plug, handle	4	
3	57881/01	Grip, handle	4	
4	MS127/4	Washer M8	4	
5	MS117/55	Bolt M8	2	
6	55368/01	Wheel axle	2	
7	55370	Wheel, nylon	2	
8	56029	Crossmember	1	
9	56030	Conduit bush, P.V.C.	1	Floodlamp support
10	56031/01	End plug	1	
11	MS125/7	Washer M6	4	Floodlamp-support crossmember
12	MS170/40	Screw M6, pan-head	4	
13	56490/01	Anti-vibration mount	4	Mountings
14	MS104/16	Screw M6, hex-head	8	
15	MS125/7	Washer M6	8	
16	MS164/20	Screw M8, socket-head	2	
17	55854/01	Insulator	2	
18	MS164/100	Screw M8, socket-head	1	
19	56492	Spacer	1	
20	MS164/120	Screw M8, socket-head	1	
21	56422	Skid plate	1	
22	MS104/16	Screw M6, hex-head	4	
23	MS125/7	Washer M6	4	
24	56190	Clip	2	Secures suction blank cap wrenches to cradle
25	53831	Rivet	2	
26	Not Used	-	-	
27	56220	Wrench locator	2	
28	MS103/35	Screw M5	2	
29	MS125/6	Washer M5	2	
30	50471/02	Blanking plug	1	
Optional Extending Handles Unit				
31	55689/03	Cradle	1	
32	56967	Handle-outer	4	
33	56969	Handle retainer	4	
34	MS164/16	Screw M8, socket-head	4	

WHEELBARROW ASSEMBLY



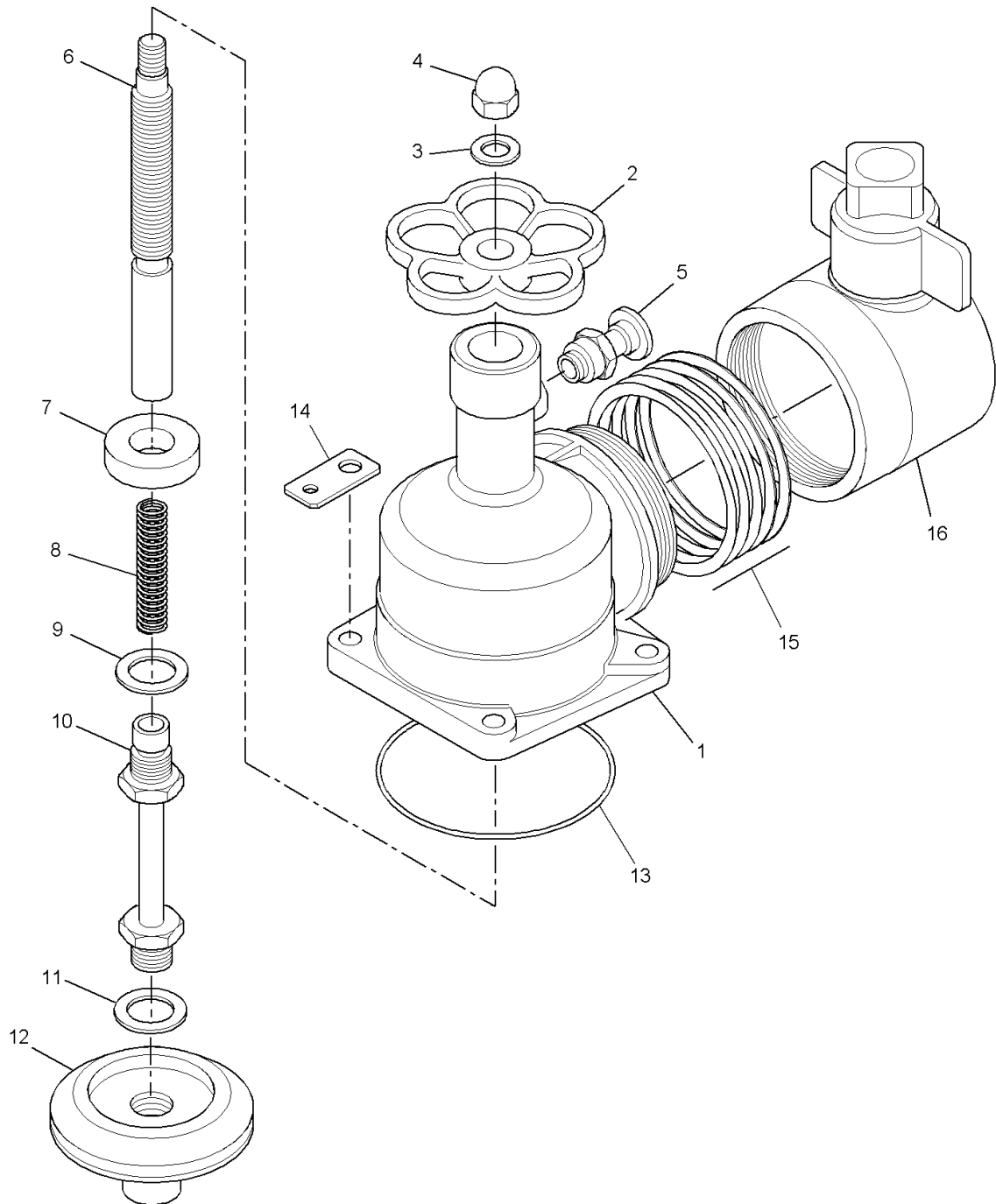
AIA0014

A20

WHEELBARROW ASSEMBLY

Item No.	Part No.	Description	Qty	Remarks
	Wheelbarrow Assembly – 56582			
1	56586	Wheel	1	
2	56583/01	Wheel frame	1	
3	50471/01	Blanking plug	2	
4	MS19/150	Bolt	1	
5	MS25/11	Washer M12	2	
6	56585	Spacer	2	
7	56584	Axle	1	
8	MS41/7	Nut M12, Nyloc	1	

DELIVERY VALVES



AIA0009

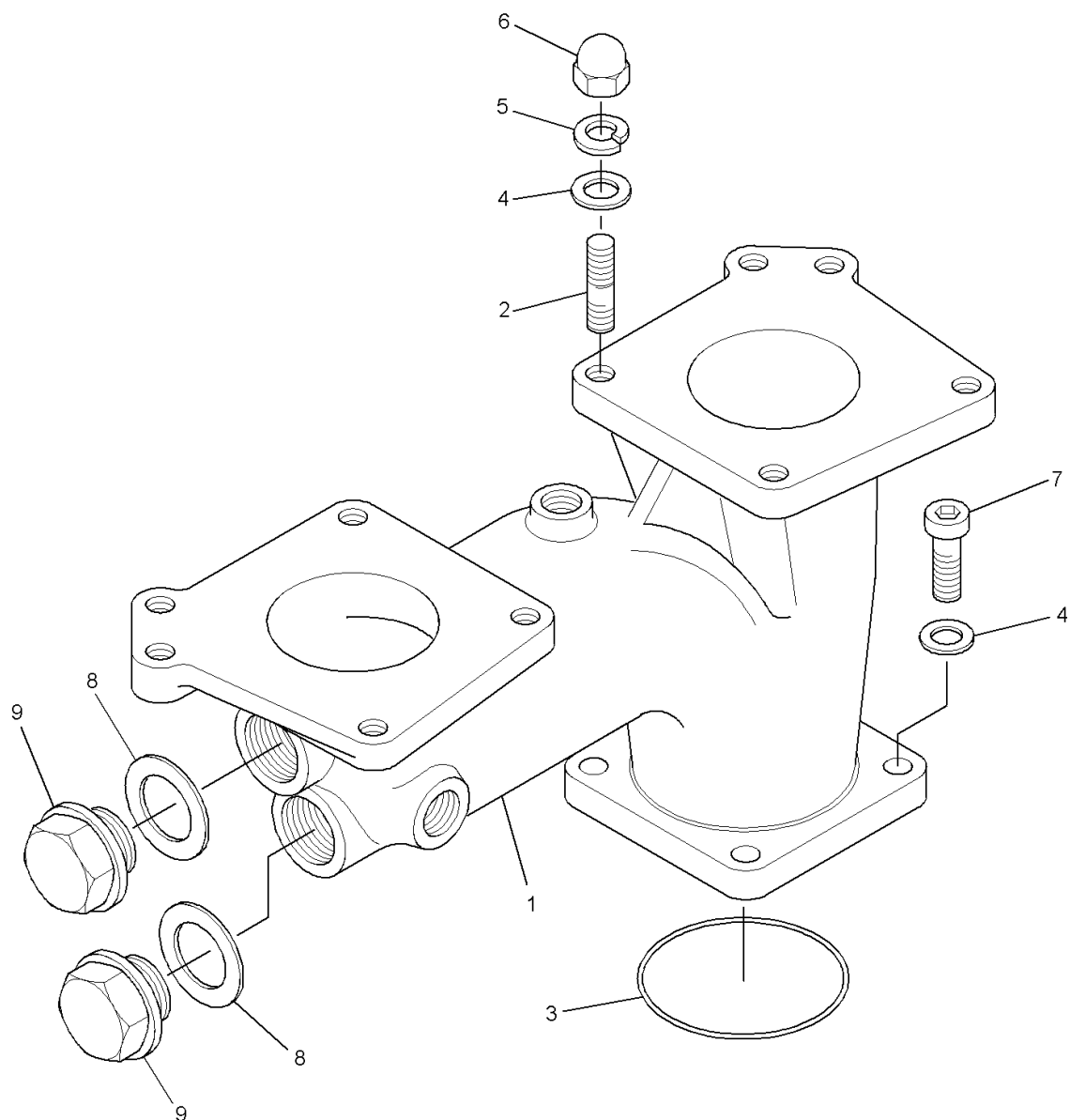
A22

DELIVERY VALVES

Item No.	Part No.	Description	Qty	Remarks
	55662/04	Delivery valve assembly 2.5in. inst.	2	Comprises items 1-13 and 15-16 (1 per valve)
1	56469/01	Valve body	1	
2	56469/11	Hand wheel	1	
3	56469/12	Washer M10	1	
4	56469/13	Nut, domed M10	1	
5	56469/10 *	Lock	1	For hose draining
6	56469/02	Spindle	1	
7	56469/03*	Spindle sleeve c/w seals	1	
8	56469/09 *	Spring	1	
9	56469/06	Safety lock	1	
10	56469/05	Stem assembly	1	
11	56469/08*	Safety lock	1	
12	56469/07 *	Plate	1	
13	54051 *	'O' ring	1	Valve to volute
14	GPR11759	Anchor, blank cap chain	1	Only fitted when Storz connectors supplied
15	SATHM10722	Shim pack	1	
16	56559	Instantaneous connector 2½"	1	

* These are available in delivery valve seal kit
 56940/01 Seal kit – continental delivery valve (Alum)
 56940/02 Seal kit – continental delivery valve (GM)
 56940/03 Seal kit – instantaneous connector (Cont'l & BV)

DELIVERY MANIFOLD



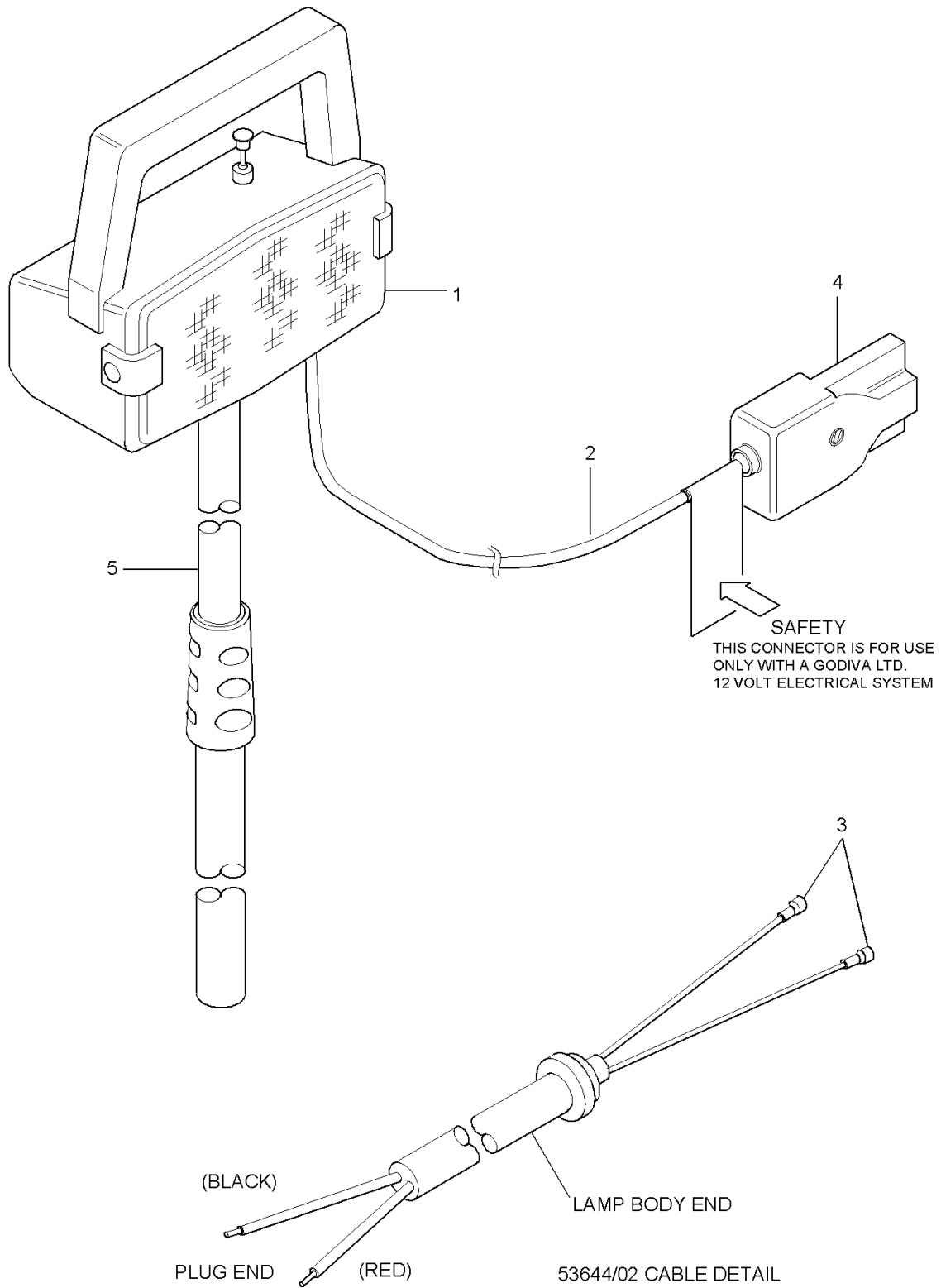
AIA0010

A24

DELIVERY MANIFOLD

Item No.	Part No.	Description	Qty	Remarks
1	55731	Delivery manifold	1	
2	MS49/30	Stud M10	8	
3	55848	'O' ring	1	Manifold to volute
4	MS25/10	Washer M10	12	
5	MS29/7	Washer, spring	8	
6	MS35/9	Nut M10	8	Delivery valve studs
7	MS165/30	Screw M10, socket-head	4	Manifold to volute
8	UFP2303/10	Sealing washer $\frac{3}{4}$ in. BSP	2	
9	S64/6	Plug, shouldered $\frac{3}{4}$ in. BSP	2	
-	57456	Strainer assembly	1	} Not shown
-	UFP2303/10	Sealing washer	1	

FLOODLIGHT

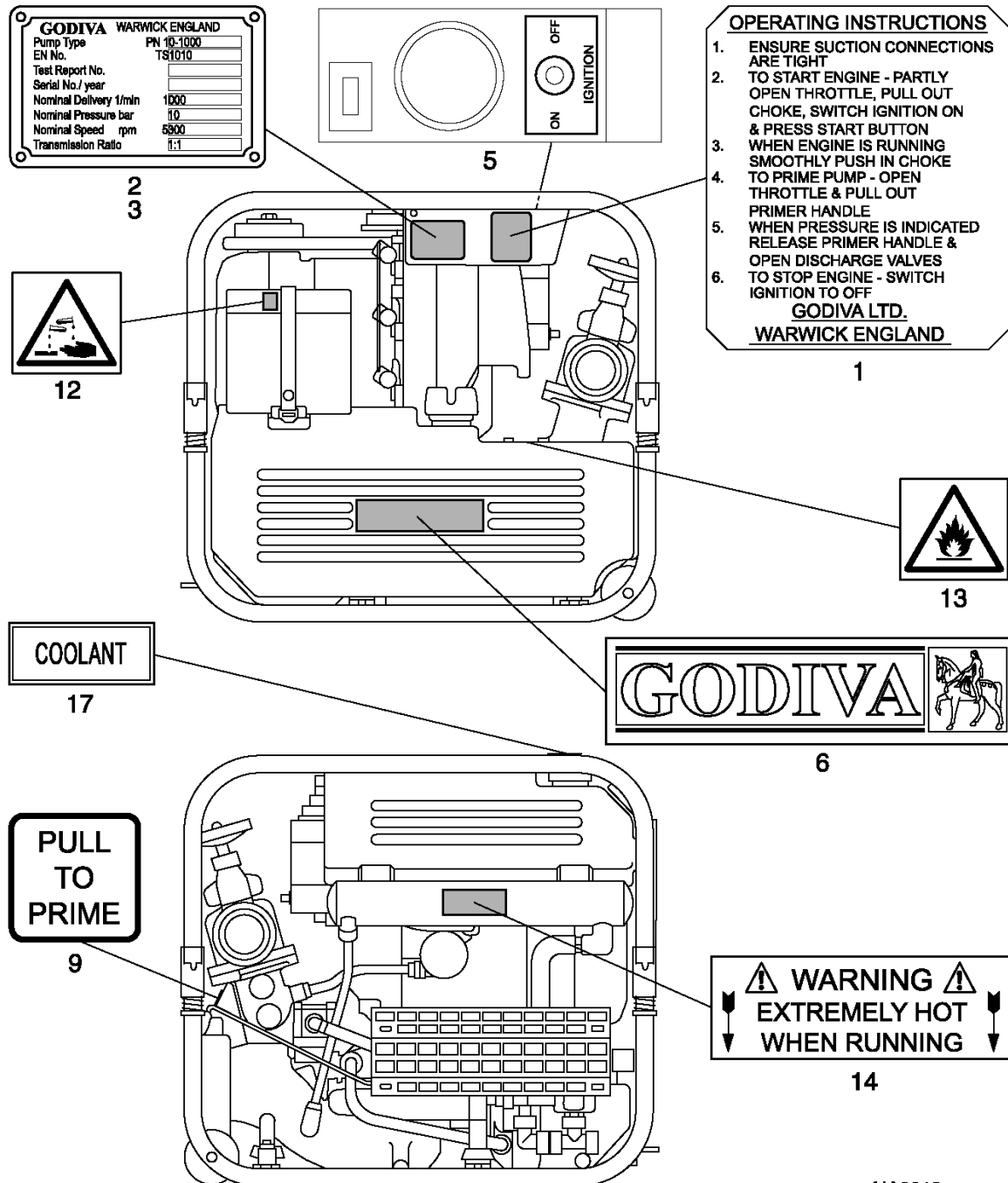


AIA0011

FLOODLIGHT

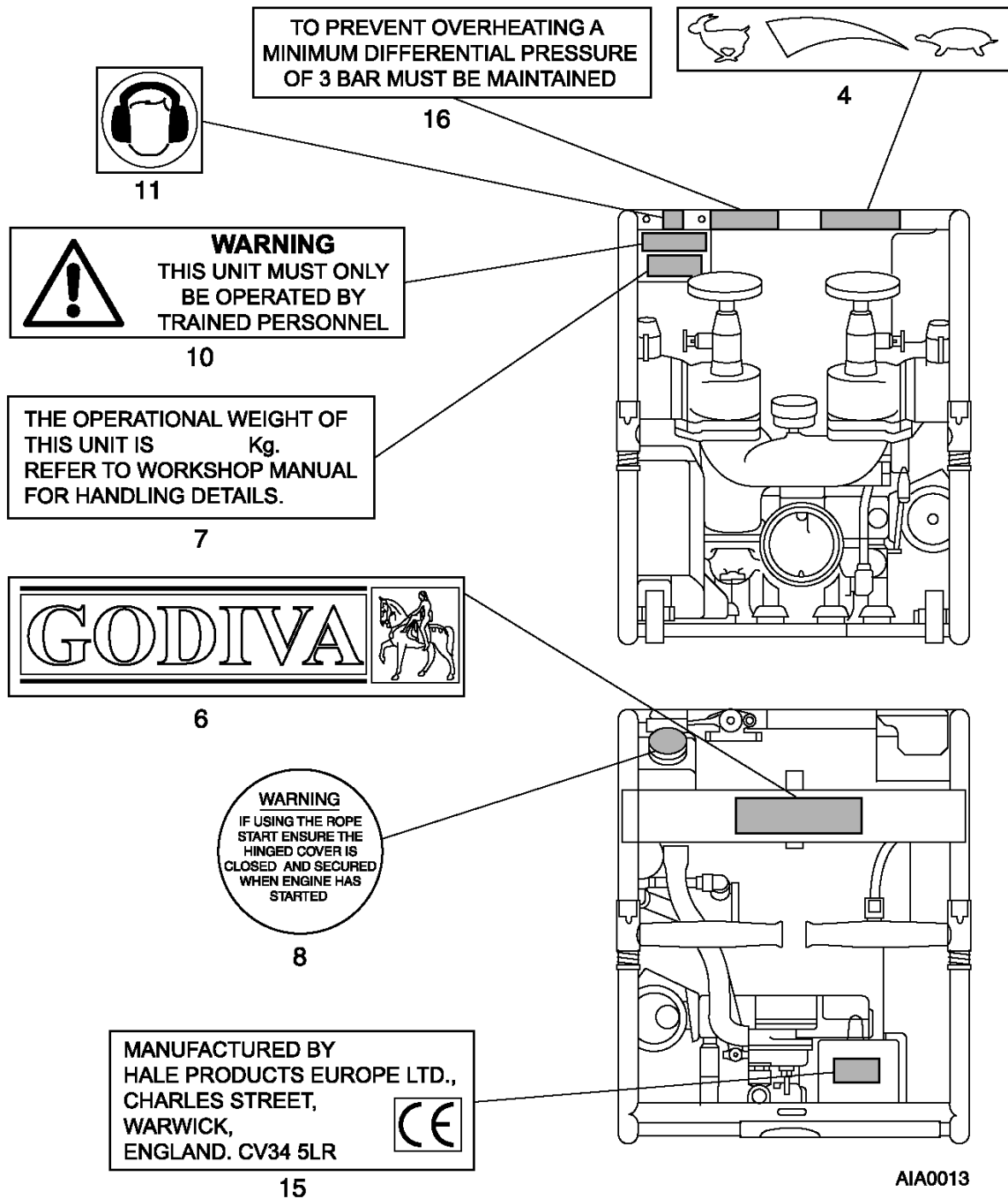
Item No.	Part No.	Description	Qty	Remarks
-	56504	Floodlight assembly	1	Includes items 1 - 5
1	53642	Floodlight, lamp only	1	
2	53644/02	Cable, floodlight	1	
3	9535/2	Insulated terminal	1	
-	10353	Connector	1	
-	10353/1	Insulator for connector	1	
4	55682	Plug	1	
5	56505	Telescopic-stem assembly	1	

LABELS AND INSTRUCTION PLATES (Sheet 1)



AIA0012

LABELS AND INSTRUCTION PLATES (Sheet 2)



LABELS AND INSTRUCTION PLATES

Item No.	Part No.	Description	Qty	Remarks
1	56267	Instruction plate	1	
	56267/01	Instruction plate, USA version		
2	56268	Serial number plate	1	
3	DSM8135/1	Pop rivet	4	
4	56269	Instruction plate – Throttle	1	
5	56270	Instruction plate – Ignition	1	
6	53694	Nameplate, large	2	
7	56212	Weight decal	1	
8	56367/01	Warning plate, rope start	1	For rope start version
9	56483	Label – ‘Pull To Prime’	1	
10	56587/04	Label – ‘Trained Personnel’	1	56580/02 CE Safety Label Group
11	56587/03	Label – ‘Earmuffs’	1	
12	56587/02	Label – ‘Corrosive’	1	
13	56587/01	Label – ‘Flammable’	1	
14	56587/05	Label – ‘Extremely Hot’	1	
15	51166/02	Label – ‘Manufactured by’	1	
16	56871	Label – ‘Differential Pressure’	1	
17	58069	Label – ‘Coolant’	1	

RECOMMENDED SPARES

PUMP

Part No.	Description	Qty
55824/01	Carbon seal assembly	1
56183	Seal, seal housing-to-pump shaft	1
55825	Flinger ring	1
55830	'O' ring, seal housing	1
55831	'O' ring, seal housing-to-adaptor housing	1
55832	'O' ring, seal housing	1
52814	'O' ring	1
MS41/8	Nut, self-locking, impeller-to-shaft	1
MS180/3	Key, impeller-to-shaft	1
UFP2302/5	Sealing washer	2
MS133/6	Dowty seal, M8 screws	4
56070/01	Lower wear ring	1
56091	Upper wear ring	1
S41/10	Sealing washer (soft copper) coupling	2
56123	Diaphragm, priming valve	1
56128	'O' ring, priming valve	1
56124	Inlet gasket, priming valve	1
56127	Outlet gasket, priming valve	1
THA123/118	'O' ring, priming valve	1
THC2198	Spring, priming valve	1
55844	Gasket, exhaust-gas ejector	3
MS82/3	Hose clip	4
56307	Hose 15mm (silicone rubber)	1
56306	Hose 22mm (silicone rubber)	1
55755	'O' ring, heat exchanger-to-header tank	1
56088	Fuel filter	1
54051	'O' ring, delivery valve-to-volute	2

Intentionally left blank

PART B

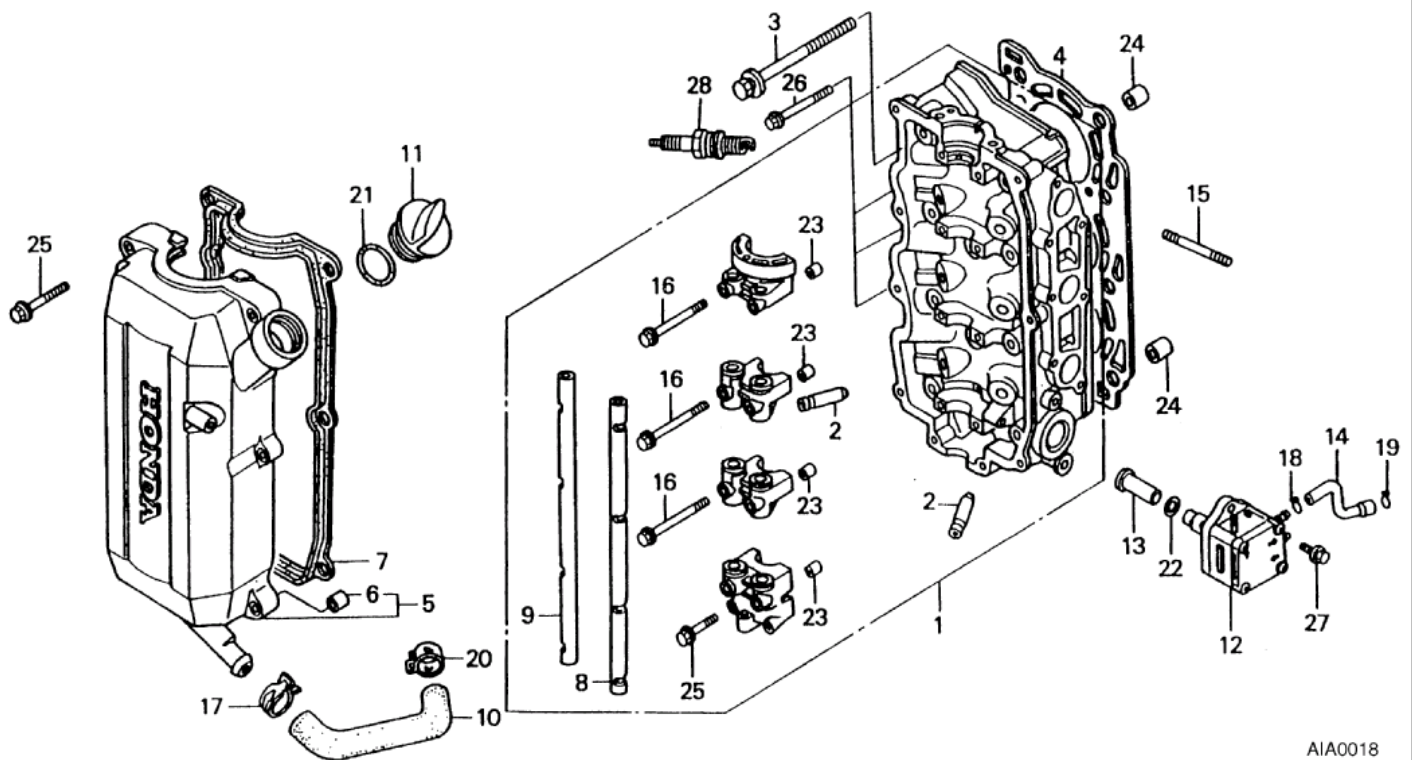
ENGINE

Intentionally left blank

CONTENTS

SECTION	PAGE
CYLINDER HEAD.....	4
CYLINDER BLOCK.....	6
CRANKSHAFT AND PISTONS	8
CAMSHAFT AND VALVE GEAR.....	10
FLYWHEEL, EXCITER AND CHARGE COILS.....	12
FLYWHEEL COVER AND TIMING BELT	14
OIL AND WATER PUMPS	16
ADAPTOR HOUSING AND OIL SUMP	18
SILENCER COVER	20
CARBURETTORS AND INLET MANIFOLD	22
THROTTLE MECHANISM AND DIAPHRAGM UNIT.....	26
CAPACITOR DISCHARGE IGNITION (C.D.I.) SYSTEM.....	28
REGULATOR/RECTIFIER AND STARTER CABLES	30
STARTER MOTOR.....	32
GASKETS	34
RECOMMENDED SPARES – ENGINE	35

CYLINDER HEAD

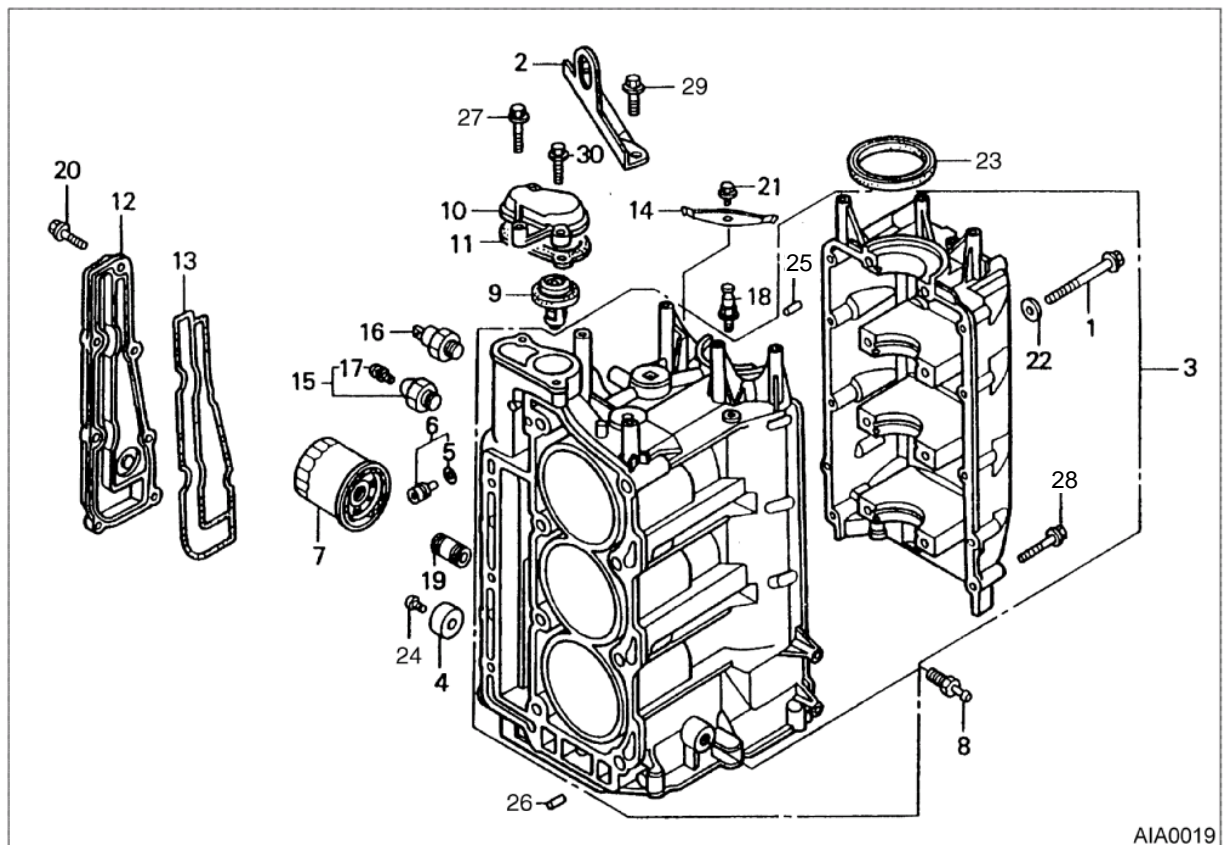


AIA0018

CYLINDER HEAD

Item No.	Part No.	Description	Qty	Remarks
1	56589	Cylinder head assembly	1	
2	56590	Valve guide (0,52 oversize)	6	
3	56591	Bolt M10 x 85	8	
4	56592	Gasket, cylinder head	1	
5	56593	Cover, cylinder head	1	
6	56594	Collar, cover	1	
7	56595	Gasket, cover	1	
8	56596	Inlet rocker shaft	1	
9	56597	Exhaust rocker shaft	1	
10	56111	Oil-return hose	1	
11	56598	Oil filler cap	1	
12	56599	Fuel pump assembly	1	
13	56600	Lifter, fuel pump	1	
14	56601	Fuel tube 'B'	1	
15	56602	Stud M6 x 28	2	
16	56603	Bolt M6 x 70	8	
17	55800/34	Clamp, oil-return hose	1	
18	56604	Clip, tube B10	1	
19	56605	Clip, tube B12	1	
20	55800/35	Clamp, oil-return hose	1	
21	56606	'O' ring 26 x 2,7	1	
22	56607	'O' ring 20,8 x 2,4	1	
23	56608	Dowel pin 8 x 14	8	
24	55800/20	Dowel pin 6 x 10	2	
25	56609	Bolt M6 x 35	9	
26	56610	Bolt M8 x 40	3	
27	56611	Bolt M6 x 20	2	
28	56612	Spark plug DR7 EA	3	} Either type
-	56613	Spark plug X22ESR-U ND	3	

CYLINDER BLOCK

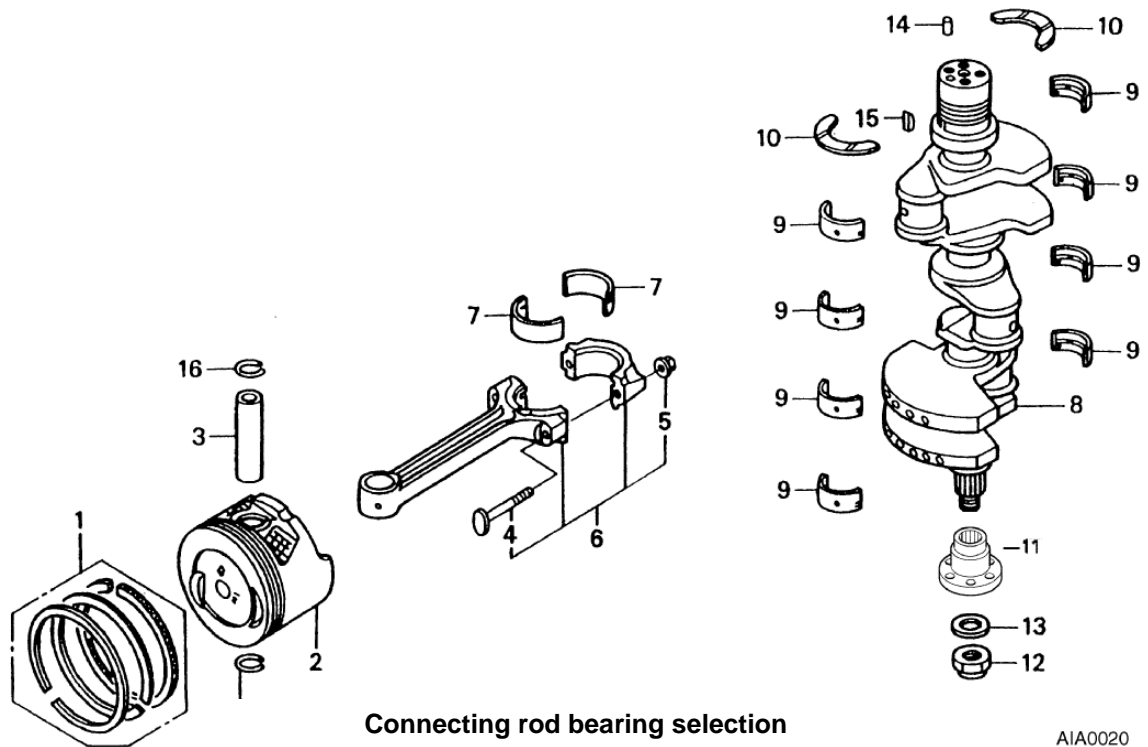


AIA0019

CYLINDER BLOCK

Item No.	Part No.	Description	Qty	Remarks
1	56614	Bolt M8 x 95	8	
2	56615	Engine hanger	1	
3	56616	Cylinder block	1	
4	56617	Sacrificial anode	1	
5	56618	'O' ring 4,8 x 1,9	1	
6	56619	Orifice assembly, oil	1	
7	55800/29	Oil filter cartridge	1	
8	S51/1	Plug, taper socket 1/8in. BSP	1	
9	56620	Thermostat assembly	1	
10	56621	Thermostat cover	1	
11	56622	Gasket, thermostat cover	1	
12	56623	Water jacket cover	1	
13	56624	Gasket, water jacket cover	1	
14	56625	Cord holder	1	
15	56626	Oil pressure switch	1	
16	56627	Switch assembly, thermostat	1	
17	56628	Screw, oil pressure switch M4 x 8	1	
18	56629	Anchor, timing-belt adjuster spring	1	
19	56169	Hollow stud, oil filter and cooler	1	
20	56630	Bolt, water jacket M6 x 22	7	
21	56631	Bolt, cord holder M6 x 12	1	
22	56632	Washer M8	8	
23	56633	Oil seal 56 x 70 x 8	1	
24	56634	Screw, pan-head M6 x 18	1	
25	56635	Dowel pin 10 x 12	8	
26	56636	Pin A, dowel 12 x 16	2	
27	56611	Bolt M6 x 20	2	
28	56638	Bolt M6 x 40	10	
29	56637	Bolt M8 x 18	2	
30	56171/01	Anti-turn bracket, oil cooler	1	Used pre Sept. 1999 (For post Sept.1999 see Pump Cooling System)
31	MS25/7	Washer M6	1	
32	MS04/12	Screw M6	1	
33	56170	'O' ring, oil cooler	1	
34	56168/01	Oil cooler	1	

CRANKSHAFT AND PISTONS



Connecting rod bearing selection

Item 7 (Oil clearance 20 ~ 38 μ m)

Crankshaft O.D. 38mm Connecting rod I.D. 41mm		A	B	C	D
		-0.000~ -0.006	-0.006~ -0.012	-0.012~ -0.018	-0.018~ -0.024
1	+0.000~ +0.006	G Red	F Pink	E Yellow	D Green
2	+0.006~ +0.012	F Pink	E Yellow	D Green	C Brown
3	+0.012~ +0.018	E Yellow	D Green	C Brown	B Black
4	+0.018~ +0.024	D Green	C Brown	B Black	A Blue

AIA0020

Reference Chart A

Main bearing selection

Item 9 (Oil clearance 21 ~ 39 μ m)

Crankcase I.D. 44mm Crankshaft O.D. 41mm		A	B	C	D
		+0.000~ +0.006	+0.006~ +0.012	+0.012~ +0.018	+0.018~ +0.024
1	+0.006~ +0.000	G Red	F Pink	E Yellow	D Green
2	-0.000~ -0.006	F Pink	E Yellow	D Green	C Brown
3	-0.006~ -0.012	E Yellow	D Green	C Brown	B Black
4	-0.012~ -0.018	D Green	C Brown	B Black	A Blue

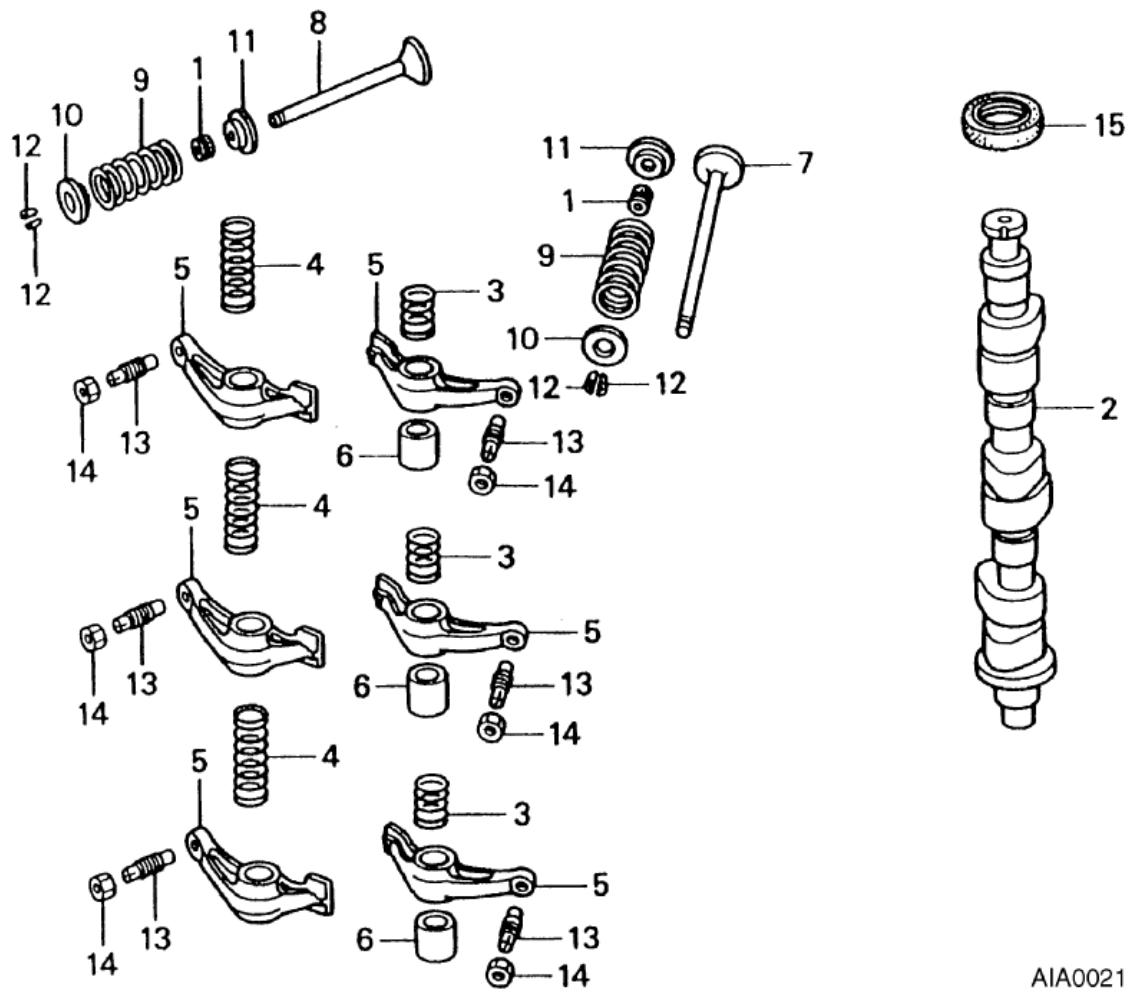
Reference Chart B

B8

CRANKSHAFT AND PISTONS

Item No.	Part No.	Description	Qty	Remarks
1	56639	Piston ring set	3	
2	56640	Piston	3	
3	56641	Piston pin	3	
4	56642	Connecting rod bolt	6	
5	56643	Connecting rod nut	6	
6	56644	Connecting rod assembly	3	Includes Items 4 and 5
7	56645	Connecting rod bearing A (Blue)	6	See Reference Chart A
-	56646	Connecting rod bearing A (Blue)	6	
-	56647	Connecting rod bearing B (Black)	6	
-	56648	Connecting rod bearing B (Black)	6	
-	56649	Connecting rod bearing C (Brown)	6	
-	56650	Connecting rod bearing C (Brown)	6	
-	56651	Connecting rod bearing D (Green)	6	
-	56652	Connecting rod bearing D (Green)	6	
-	56653	Connecting rod bearing E (Yellow)	6	
-	56654	Connecting rod bearing E (Yellow)	6	
-	56655	Connecting rod bearing F (Pink)	6	
-	56656	Connecting rod bearing F (Pink)	6	
-	56657	Connecting rod bearing G (Red)	6	
-	56658	Connecting rod bearing G (Red)	6	
8	56659	Crankshaft	1	
9	56660	Main bearing A (Blue) – (Daids)	8	See Reference Chart B
-	56661	Main bearing B (Black) – (Daids)	8	
-	56662	Main bearing C (Brown) – (Daids)	8	
-	56663	Main bearing D (Green) – (Daids)	8	
-	56664	Main bearing E (Yellow) – (Daids)	8	
-	56665	Main bearing F (Pink) – (Daids)	8	
-	56666	Main bearing G (Red) – (Daids)	8	
10	56667	Thrust washer	2	
11	55822	Pump-drive adaptor	1	
12	55800/22	Nut M22	2	
13	55800/23	Washer M22	1	
14	56668	Dowel pin	1	
15	56669	Woodruff key 25 x 14	1	
16	56670	Clip, piston pin 18mm	6	

CAMSHAFT AND VALVE GEAR

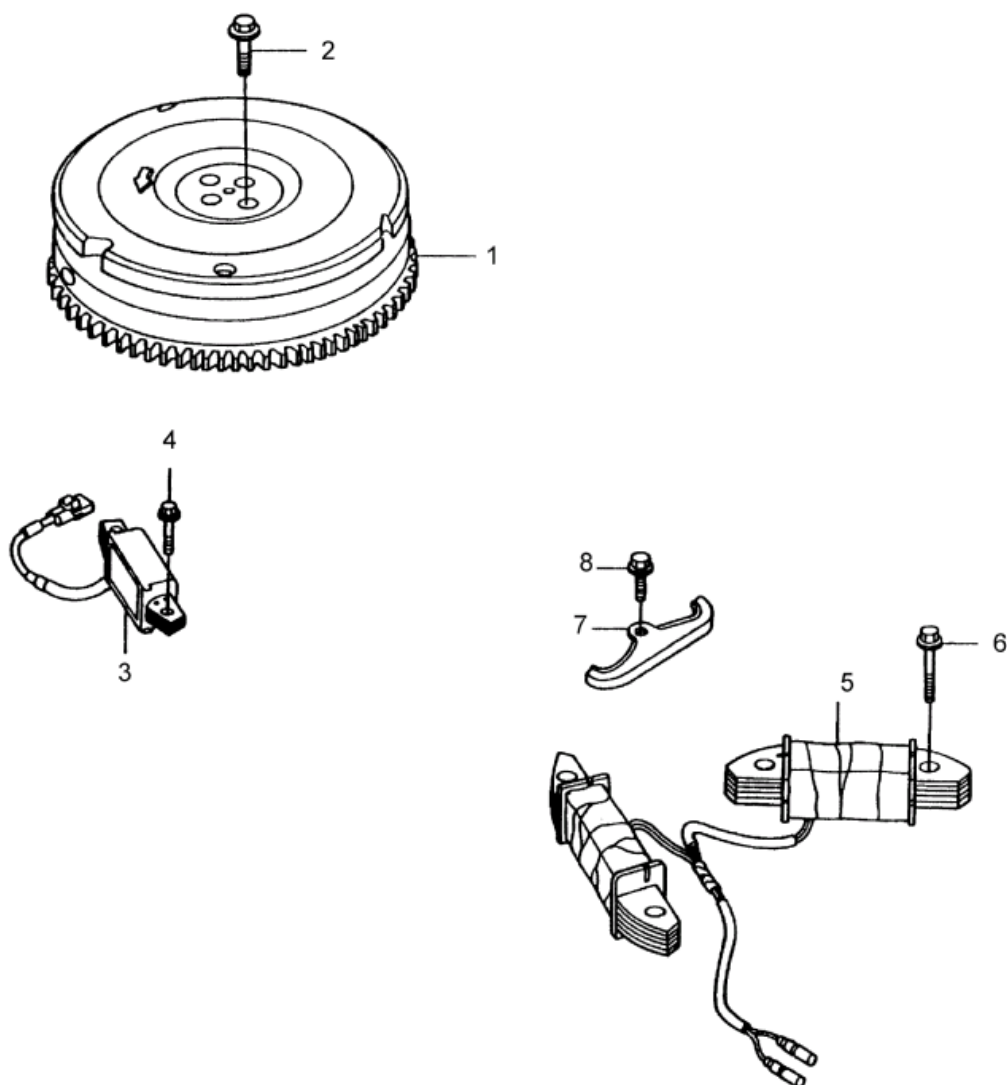


AIA0021

CAMSHAFT AND VALVE GEAR

Item No.	Part No.	Description	Qty	Remarks
1	56671	Valve-stem seal	6	
2	56672	Camshaft	1	
3	56673	Spring, rocker arm (A)	3	
4	56674	Spring, rocker arm (B)	3	
5	56675	Rocker arm	6	
6	56676	Collar, rocker arm	6	
7	56677	Inlet valve	3	
8	56678	Exhaust valve	3	
9	56679	Valve spring	6	
-	56680	Valve spring	6	Not shown
10	56681	Retainer, valve spring	6	
11	56682	Seat, valve spring	6	
12	56683	Cotter, valve	12	
13	56684	Tappet-adjuster screw	6	
14	56685	Nut, adjuster screw	6	
15	56686	Oil seal, camshaft 30 x 42 x 8	1	

FLYWHEEL, EXCITER AND CHARGE COILS

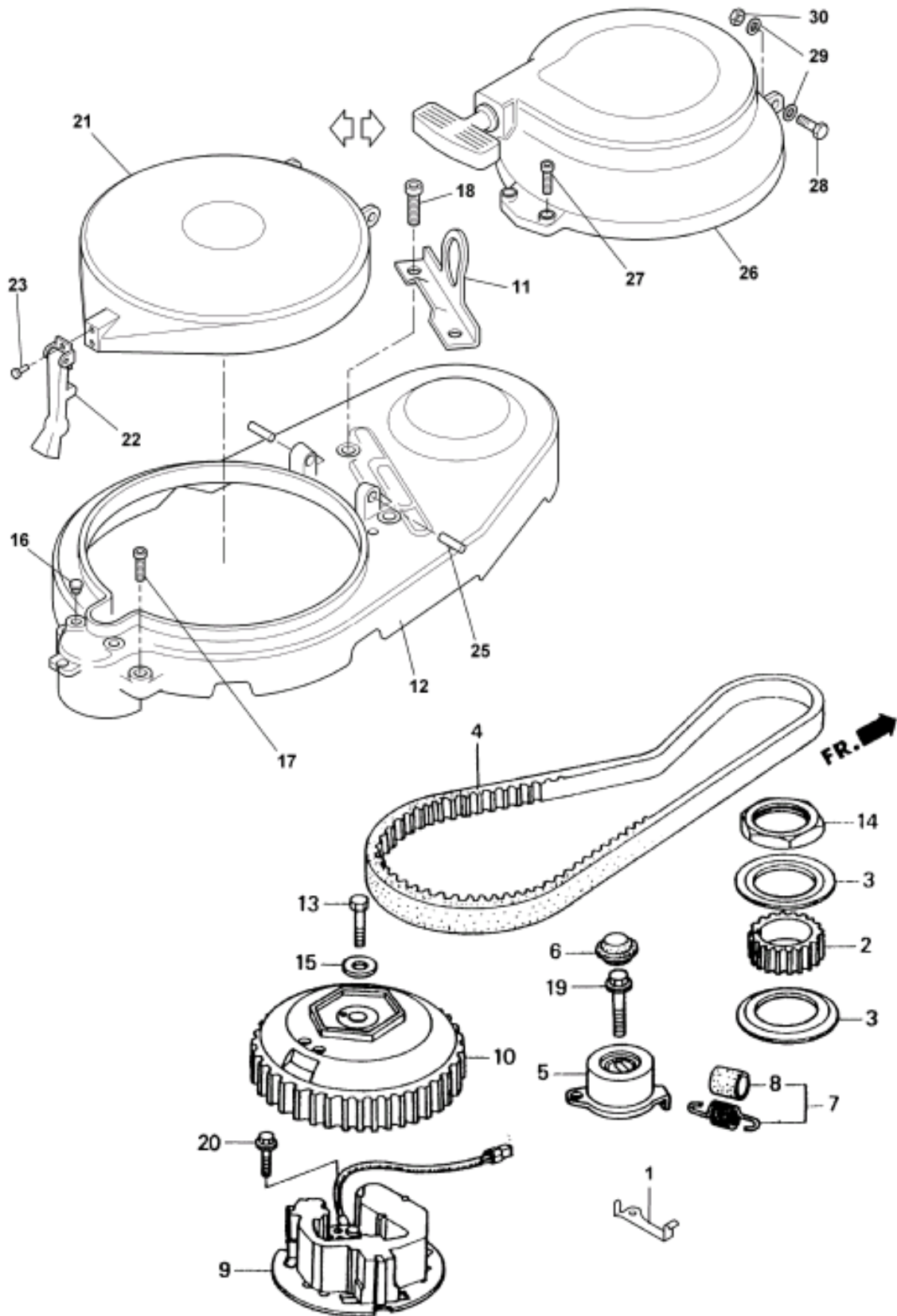


AIA0022

FLYWHEEL, EXCITER AND CHARGE COILS

Item No.	Part No.	Description	Qty	Remarks
1	56687	Flywheel	1	
2	56688	Flange bolt M10 x 25	4	
3	56689	Exciter coil assembly	1	
4	56690	Flange bolt M6 x 25	2	
-	56691	Charge coil kit (10A)	1	Comprises Items 5-8
5	56692	Charge coil assembly (12V, 10A)	1	
6	56693	Flange bolt M6 x 32	2	
7	56694	Cord holder	1	
8	56713	Flange bolt M6 x 12	1	

FLYWHEEL COVER AND TIMING BELT



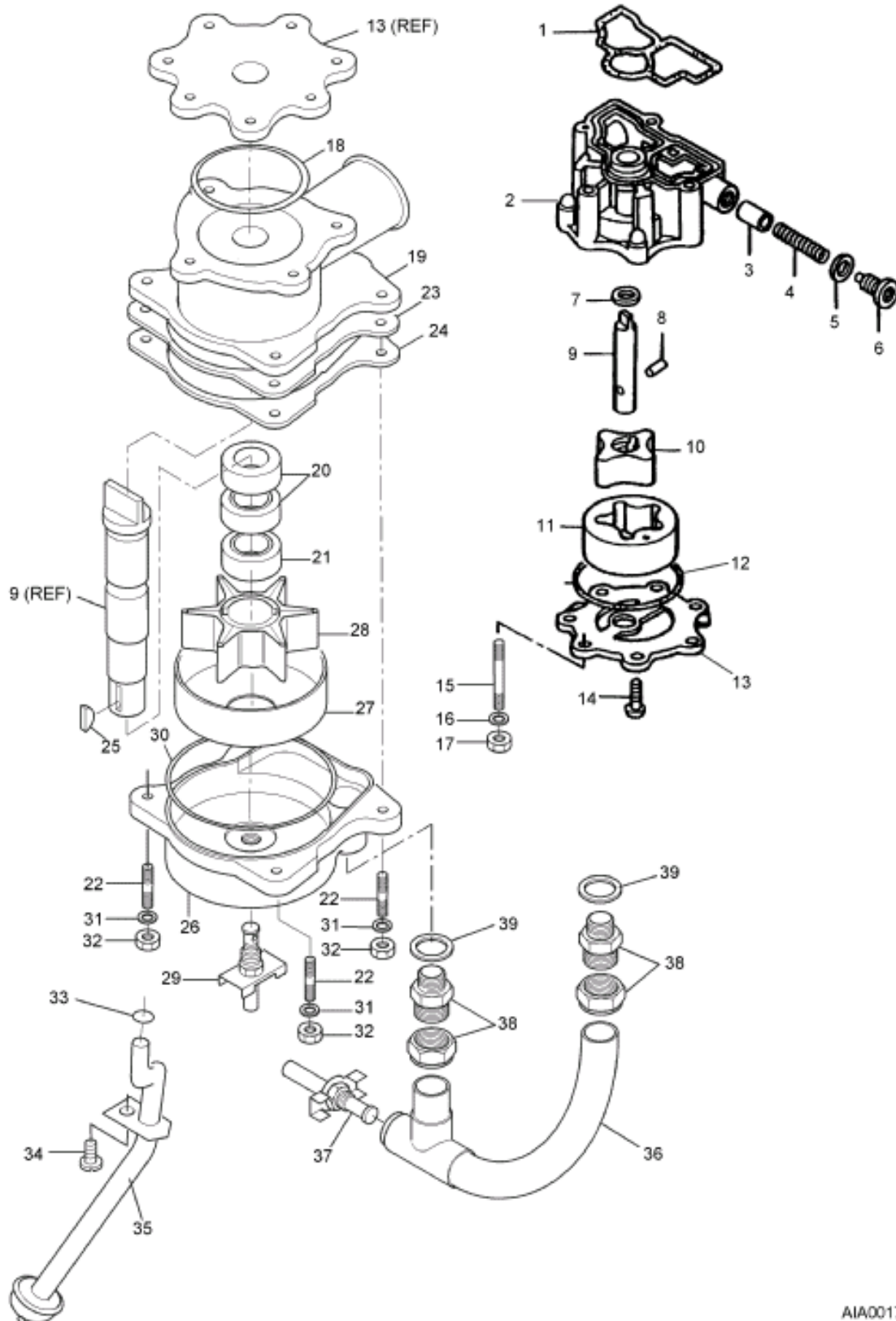
AIA0016

B14

FLYWHEEL COVER AND TIMING BELT

Item No.	Part No.	Description	Qty	Remarks
1	56695	Tube clamp	1	
2	56696	Timing pulley	1	
3	56697	Guide plate, timing belt	2	
4	56698	Timing belt	1	
5	56699	Tensioner, timing belt	1	
6	56700	Cap, tensioner	1	
7	56701	Tensioner spring	1	
8	56702	Boot, tensioner spring	1	
9	56703	Pulser coil assembly	1	
10	56704	Pulser rotor	1	
11	56890	Lifting lug	1	
12	56560	Flywheel cover	1	
13	56706	Flange bolt M10 x 32	1	
14	56707	Locknut M48	1	
15	56708	Washer M10 x 28 x 5	1	
16	56873	Plug	4	Rope start version
17	MS163/20	Screw M6, socket-head	2	
18	MS164/25	Screw M8, socket-head	2	
19	56712	Flange bolt M10 x 38	1	
20	56713	Flange bolt M6 x 12	2	
21	56561	Hinged cover	1	Rope start version
22	56562	Flexible tab handle	1	Rope start version
23	53854/01	Screw, hammer driven	2	Rope start version
-	55800/70	Starter rope	1	Rope start version
24	MS163/25	Screw M6 x 25, socket-head	4	Not shown
25	MS177/138	Spirol pin	2	Rope start version
26	57088/01	Recoil starter assembly	1	Recoil start version
27	MS163/35	Screw M6 x 35	2	Recoil start version
28	MS116/35	Bolt M6 x 35	2	Recoil start version
29	MS125/7	Washer	4	Recoil start version
30	MS141/4	Nut	2	Recoil start version

OIL AND WATER PUMPS



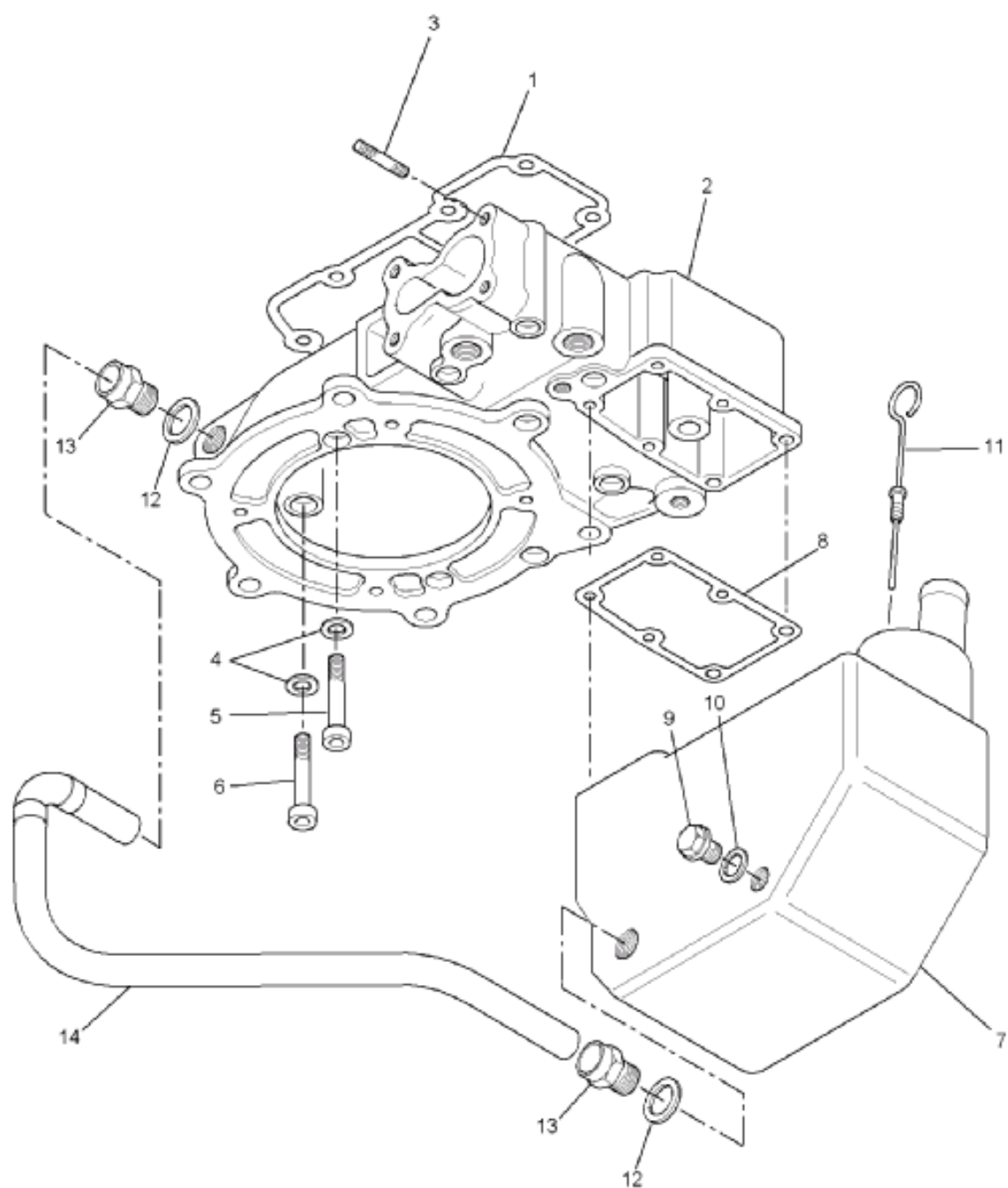
AIA0017

B16

OIL AND WATER PUMPS

Item No.	Part No.	Description	Qty	Remarks
-	55940/01	Water pump complete assy.	1	
-	57957	Oil pump complete assy.	1	Also supply 55940/01 water pump
1	56714	Gasket	1	Housing-to-cylinder head
2	56715	Housing, oil pump	1	
3	56716	Relief valve	1	
4	56717	Spring, relief valve	1	
5	56718	Sealing washer 14mm	1	
6	56719	Bolt, sealing	1	
7	56720	Thrust washer 13mm	1	
8	56721	Roller 5 x 17,8	1	
9	55804	Oil/water pump-drive shaft	1	
10	56722	Inner rotor	1	
11	56723	Outer rotor A	1	
12	56724	'O' ring	1	
13	55805	Cover plate	1	
14	55800/07	Screw M6 x 16, pan-head	3	
15	MS47/60	Stud M6 x 60	4	
16	MS25/7	Washer M6	4	
17	MS41/4	Nut M6, self-lock	4	
18	55809	'O' ring	1	
19	55806	Seal housing	1	
20	55810	Oil seal	2	
21	55811	Oil seal	1	
22	MS47/16	Stud M6 x 16	4	
23	55800/03	Gasket, B-impeller	1	
24	55800/04	Impeller cover	1	
25	55812	Woodruff key	1	
26	55807	Impeller housing	1	
27	55800/02	Pump liner	1	
28	55935/02	Impeller sleeve, sub-assembly	1	
29	52119	Drain tap, coolant	1	
30	55800/05	'O' ring, water pump	1	
31	MS25/7	Washer M6	4	
32	MS41/4	Nut M6, self-lock	4	
33	55800/31	'O' ring 13,8 x 2,5	1	
34	MS64/75	Screw M8, socket-head	1	
35	55875/01	Oil suction strainer	1	
36	57155/01	Engine coolant feed pipe	1	
37	52119	Drain tap	1	
38	55873	Straight coupler	2	
39	UFP2303/8	Sealing washer 1/2in. BSP	2	

ADAPTOR HOUSING AND OIL SUMP



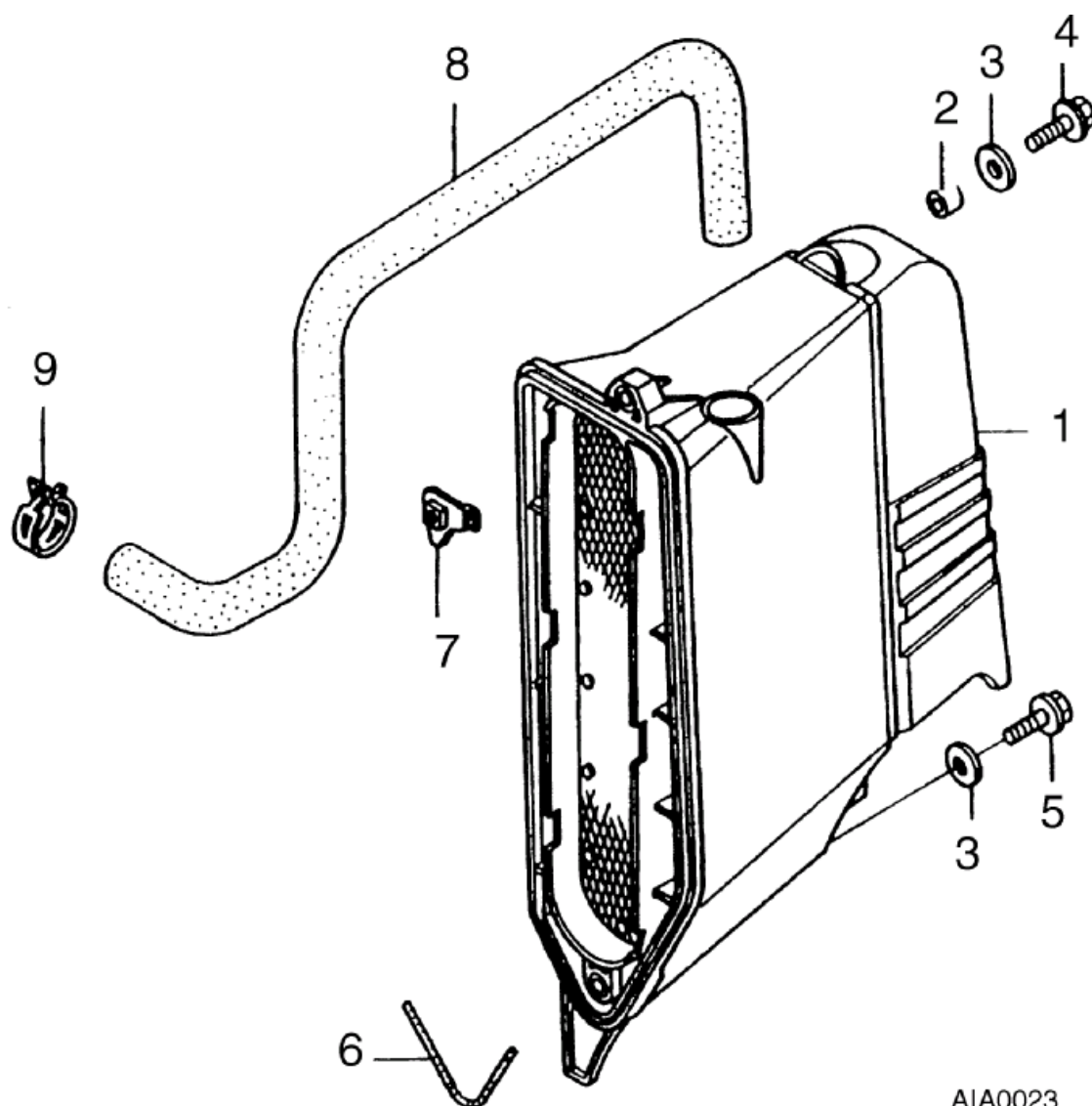
AIA001

B18

ADAPTOR HOUSING AND OIL SUMP

Item No.	Part No.	Description	Qty	Remarks
1	55800/21	Gasket, adaptor	1	Housing-to-cylinder block
2	55695/01	Adaptor housing	1	
3	MS148/50	Stud M8	4	Adaptor-to-exhaust gas ejector
4	MS33/8	Bonded seal M8	9	} Adaptor housing-to-cylinder head - Not shown
5	MS164/65	Screw M8, socket-head	8	
6	MS164/25	Screw M8, socket-head	1	
7	55886	Oil sump sub-assembly	1	
8	55877	Gasket	1	Oil sump-to-adaptor housing
9	S64/2	Drain plug 1/4in. BSP	1	
10	UFP2303/5	Sealing washer 1/4in. BSP	1	
11	56039	Dip stick, engine oil	1	
12	UFP2303/8	Sealing washer 1/2in. BSP	2	
13	55873	Straight coupler 15 x 0.5	2	
14	56184/01	Connecting-pipe assembly	1	

SILENCER COVER



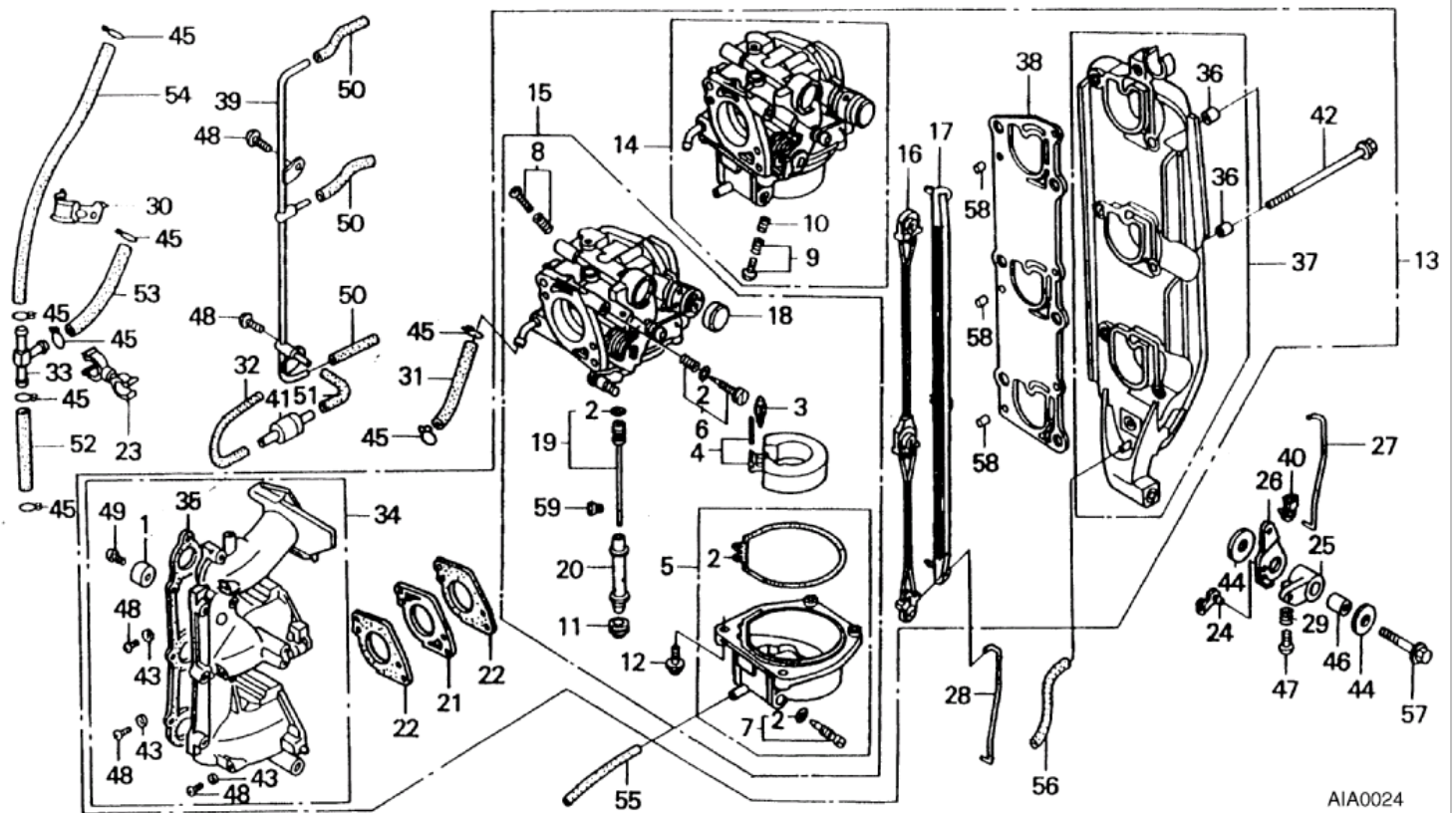
AIA0023

B20

SILENCER COVER

Item No.	Part No.	Description	Qty	Remarks
1	56725	Silencer cover (intake)	1	
2	56726	Distance collar	2	
3	56727	Washer 6,5 x 18	2	
4	56690	Flange bolt M6 x 25	1	
5	56638	Flange bolt M6 x 40	1	
6	56728	Packing	1	} Silencer cover
7	56864	Nut	1	
8	56729	Breather tube	1	
9	56730	Clamp	1	

CARBURETTORS AND INLET MANIFOLD



AIA0024

CARBURETTORS AND INLET MANIFOLD

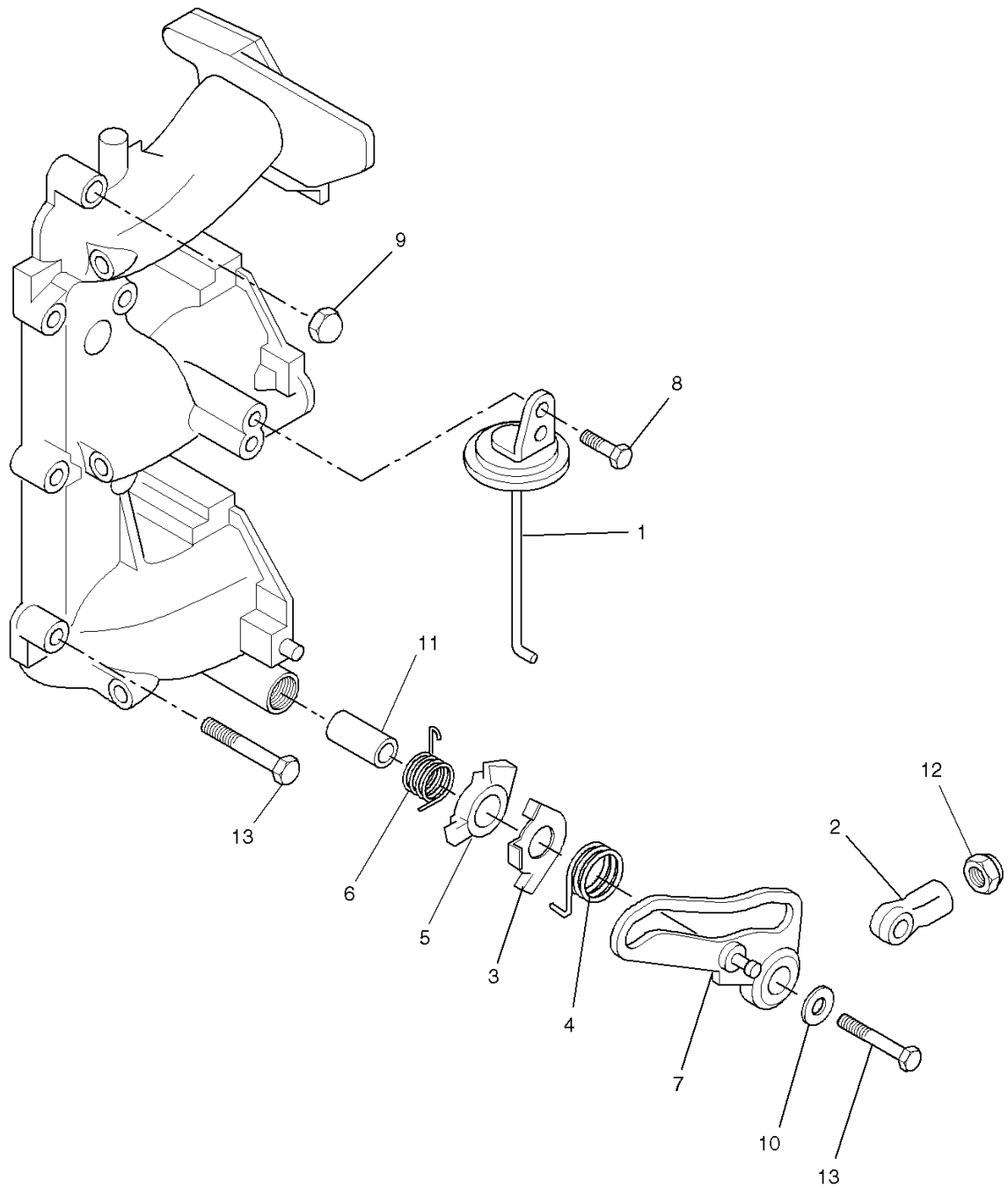
Item No.	Part No.	Description	Qty	Remarks
1	56731	Anode, sacrificial	1	
2	56732	Gasket set	3	
3	56733	Float-valve set	3	
4	56734	Float set	3	
5	56735	Float chamber set	3	
6	56736	Screw (set)	3	
7	56737	Drain-screw set	3	
8	56738	Screw (set)	1	
9	56739	Screw (set)	2	
10	56740	Spring	3	
11	56741	Plug screw	3	
12	56742	Screw	12	
13	56743	Carburettor assembly	1	
14	56744	Carburettor assembly (Nos.1 and 2)	2	
15	56745	Carburettor assembly (No.3)	1	
16	56746	Connecting link, throttles	1	
17	56747	Connecting link, chokes	1	
18	56748	Choke dust cap	3	
19	56749	Jet set	3	
20	56750	Main nozzle	3	
21	56751	Carburettor insulator	3	
22	56752	Carburettor packing	6	
23	56753	Clamp, fuel tube	1	
24	56754	Rod joint	1	
25	56755	Choke arm (A)	1	
26	56756	Choke arm (B)	1	
27	56757	Choke rod	1	
28	56758	Choke rod knob	1	
29	MS35/5	Nut M4, choke arm	1	
30	56759	Clamp, fuel tube	1	
31	56760	Fuel tube (C)	1	
32	56761	Fuel tube (D)	1	
33	56762	Three-way joint	1	
34	56763	Inlet manifold	1	
35	56764	Packing, inlet manifold	1	
36	56765	Distance collar	6	
37	56766	Complete plate, silencer	1	
38	56767	Packing, silencer plate	1	
39	56768	Pipe	1	
40	56769	Linkage bush	1	
41	56770	Dashpot check valve	1	

B23

Item No.	Part No.	Description	Qty	Remarks
42	56771	Flange bolt M6 x 97	6	
43	56772	Thrust washer M5	3	
44	56773	Washer M6	2	
45	56774	Clip, tube B10	8	
46	56775	Distance collar 6,5 x 10,5 x 16	1	
47	MS70/25	Screw M4 x 25, pan-head, choke arm	1	
48	56777	Screw M5 x 10, pan-head	5	
49	56776	Screw M6 x 18, pan-head	1	
50	56778	Fuel tube 3,5 x 45	3	
51	56779	Fuel tube 3,5 x 60	1	
52	56780	Fuel tube 5,3 x 65	1	
53	56781	Fuel tube 5,3 x 110	1	
54	56782	Fuel tube 5,3 x 170	1	
55	56783	Tube 3,5 x 155	1	
56	56784	Tube 3,5 x 190	1	
57	56785	Flange bolt M6 x 28	1	
58	56786	Roller 6 x 15	6	
59	56787	Main jet	3	

Intentionally left blank

THROTTLE MECHANISM AND DIAPHRAGM UNIT



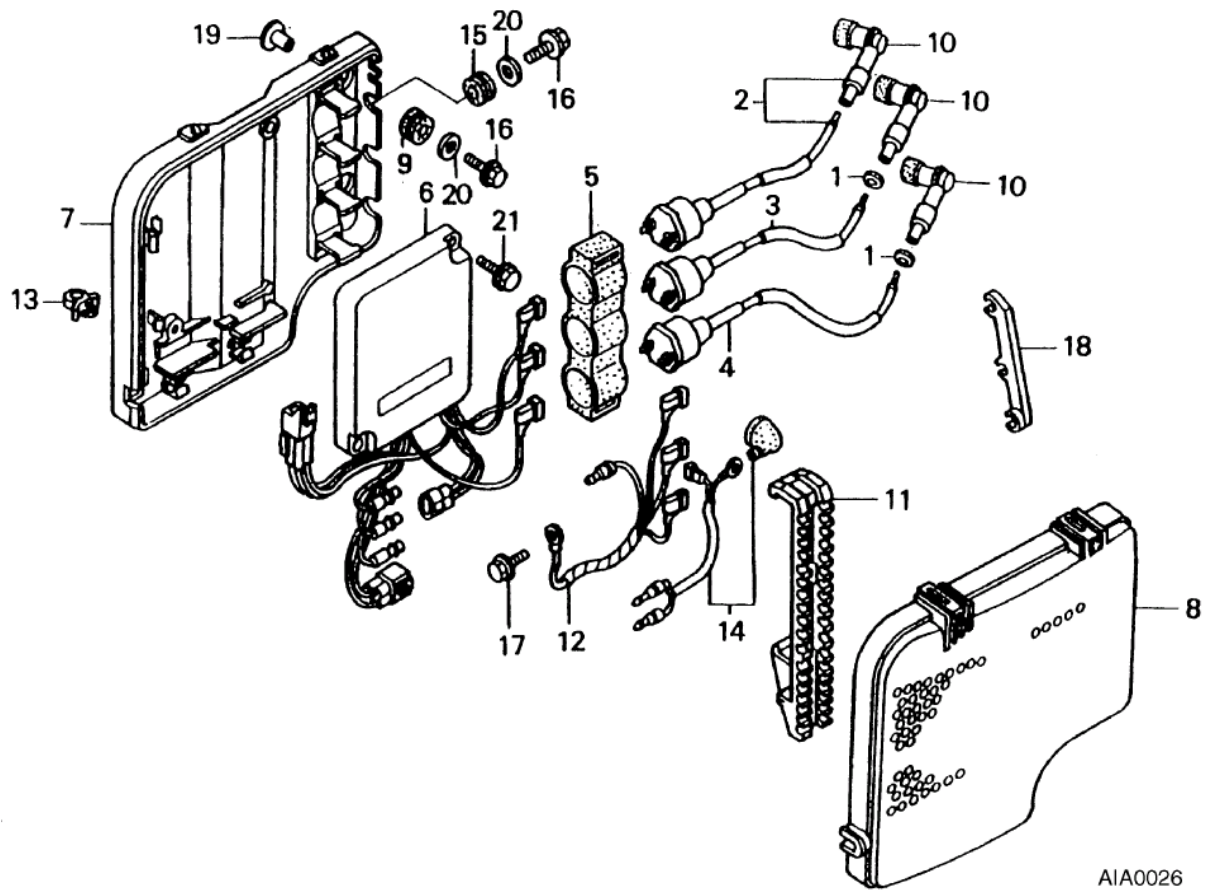
AIA0025

B26

THROTTLE MECHANISM AND DIAPHRAGM UNIT

Item No.	Part No.	Description	Qty	Remarks
1	56788	Diaphragm unit	1	
2	55800/42	Pivot linkage double-cable	1	
3	56790	Assist plate	1	
4	56791	Assist spring	1	
5	56792	Throttle-opener cam	1	
6	56793	Throttle-opener cam return spring	1	
7	56794	Throttle cam	1	
8	56795	Torx bolt M6 x 14	2	
9	56796	Cap nut M6	2	
10	56773	Washer M6	1	
11	56797	Collar 6,7 x 12,5 x 24	1	
12	56798	Nut M5	1	Pivot linkage-to-throttle cable
13	56799	Flange bolt	5	

CAPACITOR DISCHARGE IGNITION (C.D.I.) SYSTEM



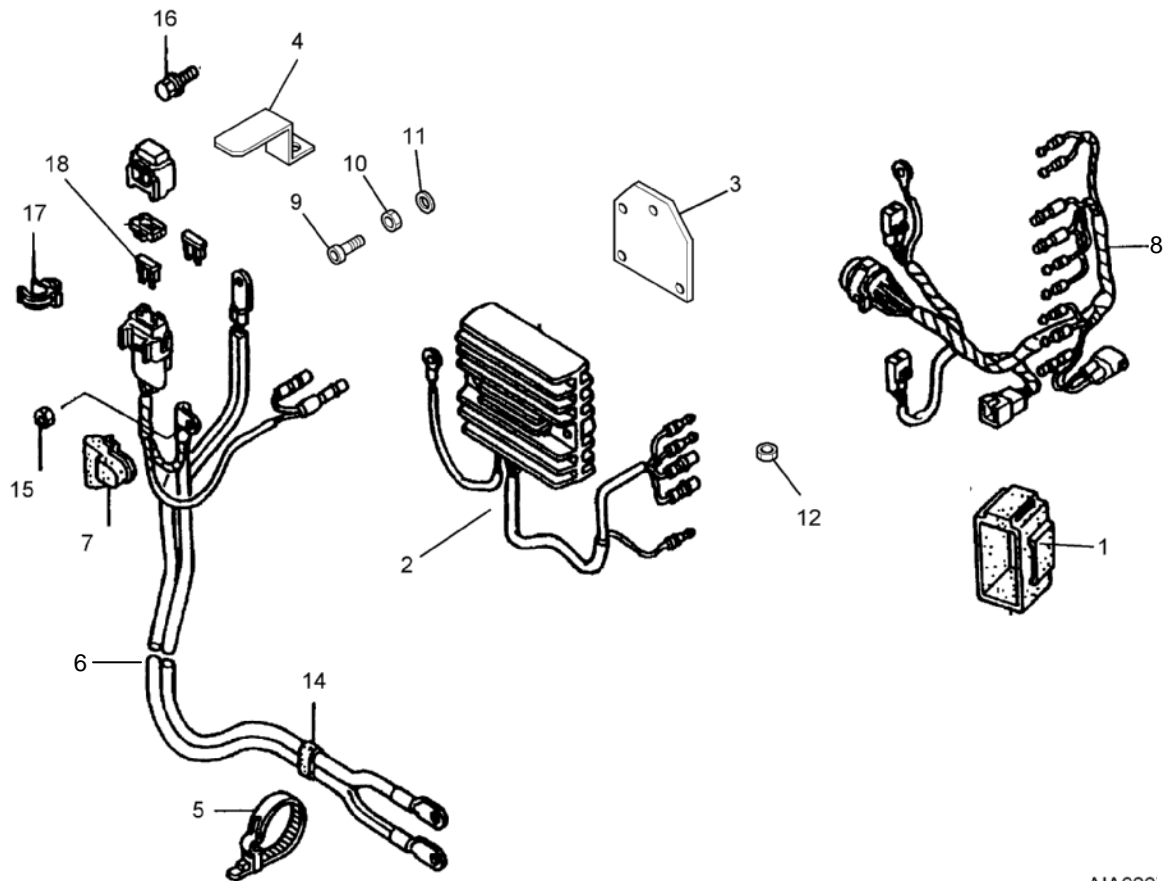
AIA0026

B28

CAPACITOR DISCHARGE IGNITION (C.D.I.) SYSTEM

Item No.	Part No.	Description	Qty	Remarks
1	56800	Grommet, H.T. lead	2	
2	56801	Ignition coil assembly No.1	1	
3	56802	Ignition coil assembly No.2	1	
4	56803	Ignition coil assembly No.3	1	
5	56804	Mounting, ignition coils	1	
6	56805	Capacitor discharge ignition (C.D.I.) unit	1	
7	56806	Case, C.D.I. unit	1	
8	56807	Cover, C.D.I. unit	1	
9	56808	Grommet, C.D.I. case (B)	2	
10	56809	Suppressor cap assembly	3	
11	56810	Connector bracket (A)	1	
12	56811	Earth (Ground) cable assembly	1	
13	56812	Clip	1	
14	56813	Cord	1	
15	56814	Grommet, under case	2	
16	56690	Flange bolt M6 x 25	4	
17	56631	Flange bolt M6 x 12	1	
18	56815	Clip, H.T. lead	1	
19	56816	Collar, C.D.I. unit case	4	
20	56817	Washer M6	4	
21	56818	Flange bolt M6 x 20	2	

REGULATOR/RECTIFIER AND STARTER CABLES



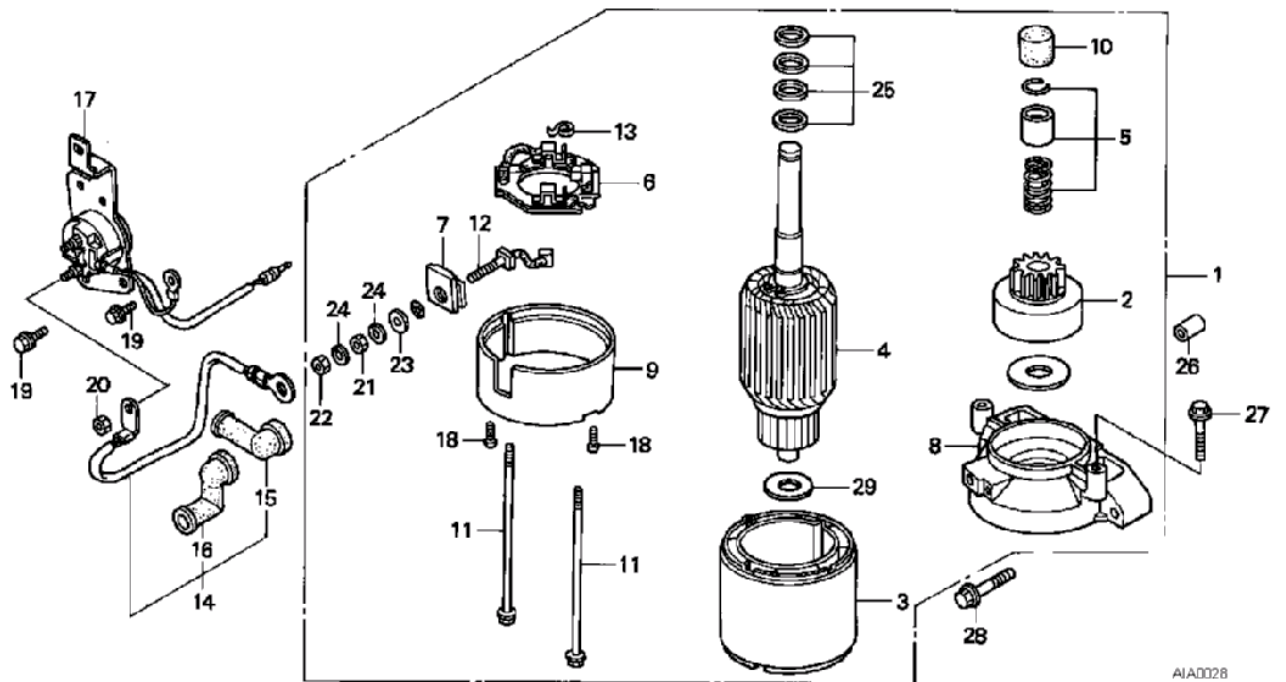
AIA002

B30

REGULATOR/RECTIFIER AND STARTER CABLES

Item No.	Part No.	Description	Qty	Remarks
1	56819	Cushion, C.D.I. unit	1	
2	55800/61	Regulator/rectifier unit (12A)	1	
3	55893	Regulator mounting bracket	1	
4	56262	Bracket, multi-pin plug mounting	1	
5	56820	Cable tie	1	
6	56196	Starter cable assembly	1	
7	56821	Cover terminal	1	
8	56822	Cable assembly, remote control	1	
9	MS163/25	Screw M6 x 25, socket-head	2	} Regulator/rectifier-to-mounting bracket
10	MS41/4	Nut M6, self-locking	2	
11	MS25/7	Washer M6	5	
12	56167/01	Spacer	1	Mounting bracket-to-engine
13	MS04/20	Screw M6 x 20	1	Not illustrated
14	56823	Clamper, battery cables	1	
15	56824	Nut M6	1	
16	56825	Flange bolt M8 x 12	2	
17	56826	Clamper, harness	1	
18	56827	Fuse blade (15A)	2	

STARTER MOTOR



AIAD028

B32

STARTER MOTOR

Item No.	Part No.	Description	Qty	Remarks
1	56828	Starter motor assembly	1	
2	56829	Over-run clutch	1	
3	56830	Yoke	1	
4	56831	Armature	1	
5	56832	Pinion stopper set	1	
6	56833	Brush holder	1	
7	56834	Bush	1	
8	56835	Bracket (FR)	1	
9	56836	Bracket (RR)	1	
10	56865	Cap stopper	1	
11	56837	Through-bolt	2	
12	56838	Brush	1	
13	56839	Brush spring	1	
14	56840	Magnetic-switch cable	1	120mm long
15	56841	Terminal cover, starter motor	1	
16	56842	Terminal cover, magnetic switch	1	
17	56843	Magnetic-switch assembly	1	
18	56844	Screw M4	2	
19	56631	Flange bolt M6 x 12	3	
20	56824	Nut M6	1	
21	56845	Nut (1)	1	
22	56846	Nut (2)	1	
23	56847	Washer (1)	1	
24	56848	Washer (2)	2	
25	56849	Thrust-washer set	1	
26	56850	Dowel pin 10 x 16	1	
27	56851	Flange bolt M6 x 28	1	
28	56852	Flange bolt M8 x 45	2	

GASKETS

Item No.	Part No.	Description	Qty	Remarks
-	56853	Gasket kit (component parts)	1	
-	56854	Packing, engine oil sump	1	
-	56855	Cylinder-head gasket	1	
-	56856	Packing, head cover	1	
-	56857	'O' ring 4,8 x 1,9	1	
-	56858	Packing, carburettor	6	
-	56859	Packing, inlet manifold	1	
-	56860	Packing, silencer cover	1	
-	56861	Packing, silencer plate	1	
-	56862	Gasket A, exhaust pipe	1	
-	56863	Gasket, thermostat cover	1	

RECOMMENDED SPARES

ENGINE

Part No.	Description	Qty
56853	Gasket set	1
DR7 EA	}	3
or		
56613	Spark plug	
56618	'O' ring, oil orifice assembly	1
56170	'O' ring, oil cooler	1
56627	Thermostatic switch	1
56626	Oil pressure switch	1
56671	Valve stem seal	6
56686	Camshaft oil seal	1
56698	Timing belt, camshaft	1
55800/05	'O' ring, water pump	1
55800/03	Gasket, water pump	1
55810	Oil seal, oil and water pump shaft	2
55811	Oil seal, oil and water pump shaft	1
55877	Gasket, oil sump-to-adaptor housing	1
56732	Carburettor gasket set	1