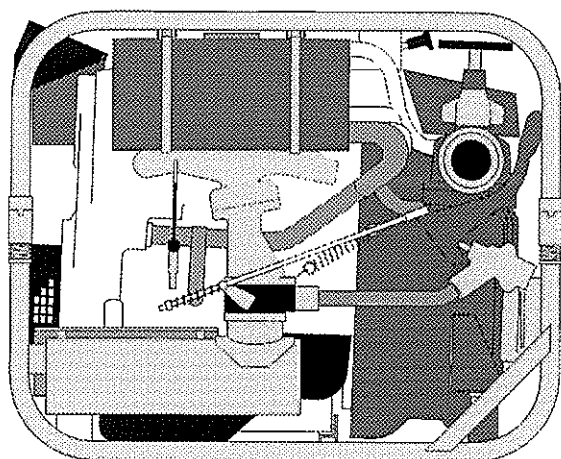




**GP1600
PORTABLE FIRE PUMP
SPARE PARTS LIST**



GODIVA

CHARLES ST., WARWICK. CV34 5LR. ENGLAND

TEL: (01926) 825000 FAX: (01926) 825066



PORTABLE PUMPS

SAFETY-RELEVANT DATA

Thank you for purchasing a Godiva Pump.

Godiva Portable Pumps are designed to give safe and reliable service - however, **BEFORE** operation it is essential that the Operating Instructions are carefully read and understood.

A risk-assessment of the pump has been conducted with the following results:

TRAINING

It is **ESSENTIAL** that Godiva pumps are operated **ONLY** by **TRAINED PERSONNEL**.

ENGINE

When using Godiva pumps driven by a gasoline-powered engine, the following safety points **MUST** be observed:

- * **DO NOT OPERATE** the unit close to flammable materials or structures.
- * **Keep ALL UNTRAINED people AWAY** from the unit during operation.
- * **GASOLINE** is extremely flammable and **MUST** be **HANDLED WITH CARE**.
- * **DO NOT** refuel whilst smoking or allow sparks or flames into the refuelling area.
- * **DO NOT OVERFILL** the fuel tank. After refuelling **ENSURE** that the fuel cap is refitted.
- * **Be careful NOT TO SPILL** fuel; if any fuel is spilled, ensure that the area is dry **BEFORE** starting the engine. Godiva recommend refuelling when the engine is **COLD**.
- * **DO NOT** run the engine in an enclosed area as poisonous gases are given off which can cause injury.
- * The exhaust system becomes **VERY HOT** during operation and **REMAINS HOT** for a time **AFTER** the engine has been stopped. **DO NOT TOUCH** the exhaust whilst the engine is **HOT**.
- * The starting system is driven by battery. **ALWAYS** connect the battery positive (+ve) cable **BEFORE** the negative (-ve) and disconnect the negative **BEFORE** the positive.
- * Batteries produce **EXPLOSIVE GASES** so keep sparks, flames and cigarettes away.

NOISE

When running, the engine-driven portable pump is noisy so **EAR PROTECTION IS NECESSARY**.

MANUAL HANDLING

The Godiva Portable Pump design incorporates suitable lifting handles or points.

A manual-handling sheet is provided with each model.

The secondary starting method (hand-start) provided **MUST BE USED WITH CARE**, following the Operating Instructions.



F.W.Mason
Engineering Manager
1st January 1995

PLEASE READ CAREFULLY BEFORE ORDERING SPARE PARTS

TO ORDER SPARE PARTS

ALWAYS QUOTE:

1. The engine serial number and the pump serial number (the pump shown as S/No. in this parts list) as identified on the unit.
2. The item number, part number and the description as given in this Parts List.

The Company cannot accept responsibility for parts not ordered in accordance with these instructions.

GENERAL:

1. **PAYMENT:** In the absence of an approved account, goods will be invoiced 'Pro Forma' or sent C.O.D. Delivery is ex-works, carriage and packing being extra.
2. **DAMAGE:** The Company does not hold itself responsible for goods lost or damaged in transit. All packages should be signed for on receipt as 'unexamined'. In the event of loss or damage, a claim should be made on the carrier without delay.
3. **PARTS CLAIMED TO BE DEFECTIVE AND REPLACEABLE UNDER GUARANTEE:** Such parts must be returned to the works, carriage paid, for examination. THE DATE OF DELIVERY AND SERIAL NUMBERS MUST ALWAYS BE GIVEN. The cost of carriage and of any work entailed in refitting replacement parts is chargeable to the claimant.
4. **PATTERNS:** If there is any doubt, send the old parts as patterns. Such patterns must be CLEARLY LABELLED, INDICATING THE SENDER'S NAME AND ADDRESS. If the patterns are to be returned, they must be marked accordingly, otherwise they will be scrapped.
5. **WARNING:** It is of the greatest importance that only genuine spare parts by Godiva Limited are used, otherwise the guarantee will be null and void.
6. **ALL SALES** are made subject to the Company's Standard Conditions of Sale in force at the time of sale.

HOW TO READ THE SPARE PARTS LIST

The layout of this Spare Parts List enables the composition of the various assemblies to be ascertained at a glance.

It should be noted that in some cases the parts listed under a particular assembly are not all parts used to make up the assembly concerned. This is because it is essential that certain parts are issued in a pre-assembled form.

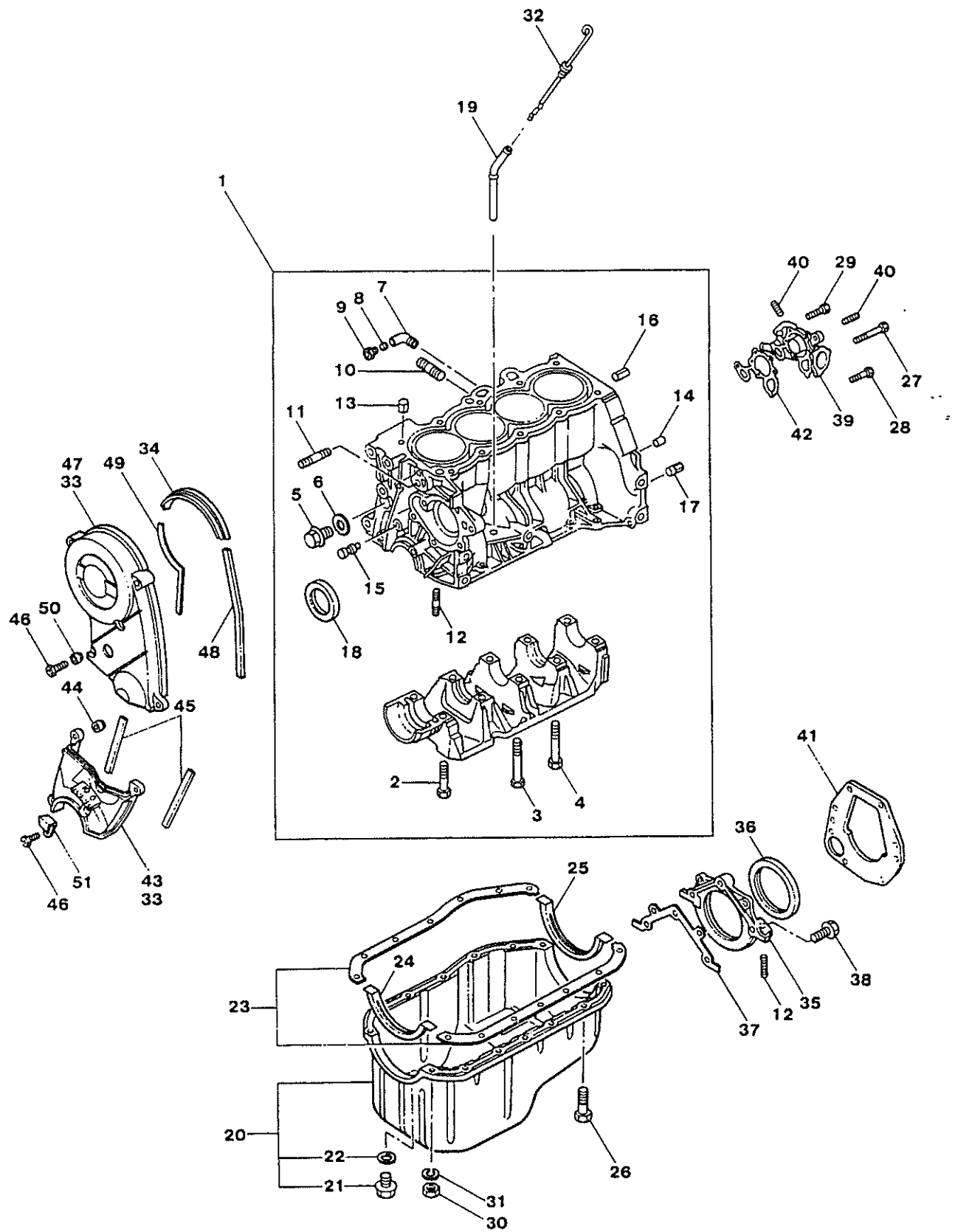
Parts which are called 'UNITS' differ from 'ASSEMBLIES' in that none of their component parts can be supplied separately, only in a pre-assembled form.

Parts which are not illustrated have no Item No. in the first column.

CONTENTS

	Page
Cylinder Block and Oil Pan	1
Crankshaft and Flywheel	4
Cylinder Head and Rocker Cover	6
Connecting Rod and Piston	7
Manifolds	8
Camshaft and Valve Mechanism	9
Gaskets	11
Oil Pump and Filter	12
Ignition System - Early Type:	
Front Cross-Member and Starter Motor	13
Ignition System - Later Type:	
Front Cross-Member and Starter Motor	16
Carburettor - 1st Type and Fuel Pump	19
Carburettor - 2nd Type	22
Carburettor - 2nd Type: Controls	25
Fuel Tank	26
Water Pump and Thermostat	27
Distributor - 1st Type	28
Distributor - 2nd Type	30
Distributor - 3rd Type	32
Battery Carrier and Cradle	34
Pump	36
Delivery Valves (Earlier model)	40
Delivery valves (Later model)	43
Recoil Hand-Start Assembly	45
Exhaust Priming and Controls	47
Heat Exchanger Assembly	49
Instrument Panel	50
Alternator	51
Floodlight, Wheel Assembly, Trolley & Tool Kit	52
Instruction Plates and Labels	53
Recommended Spares	54

CYLINDER BLOCK AND OIL PAN



CYLINDER BLOCK AND OIL PAN

Item No.	Part No.	Description	Qty	Remarks
	GPR11773/16	Engine MA10	1	S/No. 2000 - on
1	GPR12010/1	Cylinder block assembly	1	S/No. 2000 - on
2	GPR12011	Bolt - main bearing cap	1	
3	GPR12012	Bolt - main bearing cap	1	
4	GPR12013	Bolt - main bearing cap	8	
5	GPR12014	Tapered oil plug	2	
6	GPR12015	Gasket	2	
7	GPR11962	Elbow-connection	1	For oil pressure gauge pipe
8	DFP/7593/3		1	
9	DFP7594/3	Nut - tubing	1	
10	GPR12017	Stud - oil filter	1	
11	GPR12018	Stud	1	
12	GPR12019	Stud	4	
13	GPR12020	Plug	2	
14	GPR12021	Plug	3	
15	GPR12022	Plug	1	
16	GPR12023	Dowel	1	
17	50514	Flatted dowel	1	
18	GPR12024	Oil seal - crankshaft front	1	
19	GPR12025	Oil level gauge guide	1	
20	GPR12026	Oil pan assembly	1	
21	GPR12027	Drain plug	1	
22	GPR12028	Drain plug washer	1	
23	GPR12029	Oil pan gasket set	1	Item 23, replaced by models from Jan.1986. New gasket can be used on older models with addition of plain washer to Item 26.
24	GPR 12030	Front seal - oil pan	1	
25	GPR 12031	Rear seal - oil pan	1	
26	GPR12032	Bolt - oil pan	10	
27	GPR12033	Bolt - thermostat housing	3	
28	GPR12034	Bolt - thermostat housing	1	
29	GPR12035	Bolt - thermostat housing	1	
30	GPR12036	Nut	4	
31	GPR12037	Spring washer	4	
32	GPR12038	Oil level gauge	1	
33	GPR12039	Front cover assembly	1	
-	GPR12039/1	Front cover assembly	1	S/No. 2000 - on
34	GPR12040	Gasket, upper dust cover	1	
35	GPR12041	Oil seal retainer, rear	1	

Continued

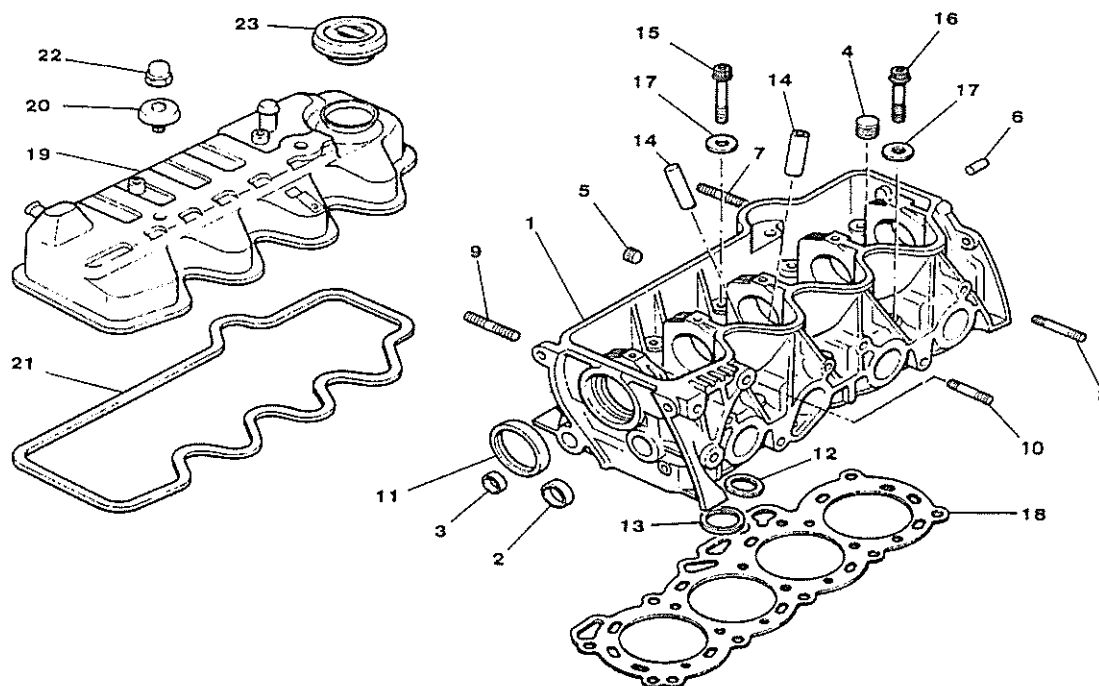
CYLINDER BLOCK AND OIL PAN (Continued)

Item No.	Part No.	Description	Qty	Remarks
36	GPR 12042	Oil seal, crankshaft rear	1	
37	GPR12043	Gasket	1	
38	GPR12044	Screw	3	
39	GPR12048	Thermostat housing	1	Fits to cylinder head
40	GPR12049	Stud,fuel pump to thermostat	2	
41	GPR11642	Plate, rear engine	1	
42	GPR12054	Gasket,thermostat housing	1	
43	GPR12055	Dust cover, lower	1	
-	GPR12055/1	Dust cover	1	S/No. 2000 - on
44	GPR12056	Grommet, front cover	6	
45	GPR12057	Gasket, lower dust cover	2	
46	GPR12059	Bolt	7	
-	GPR12059/1	Bolt	7	S/No. 2000 - on
47	GPR12060	Dust cover, upper	1	
-	GPR12060/1	Dust cover, upper	1	S/No. 2000 - on
48	GPR12061	Cover gasket	1	
49	GPR12062	Cover gasket	1	
50	GPR12056	Grommet	8	
51	GPR11711	Timing pointer	1	
-	54120	Buffer, fuel tank	1	For fuel tank.
-	MS36/8	Nut, M8	1	Fitted to models
-	MS25/9	Washer, M8	1	from April 1987

CRANKSHAFT AND FLYWHEEL

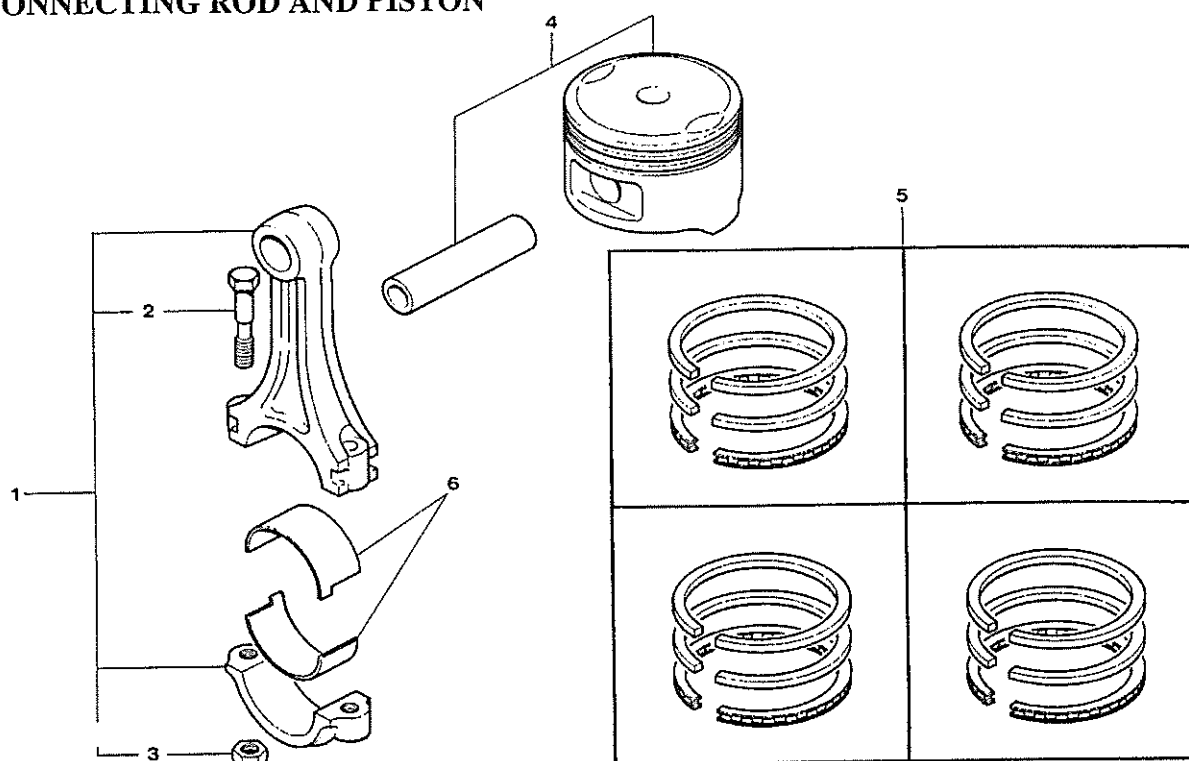
Item No.	Part No.	Description	Qty	Remarks
1	GPR12097	Crankshaft	1	
2	GPR12098	Toothed pulley, crankshaft	1	
-	GPR12098/1	Toothed pulley, crankshaft	1	S/No. 2000 - on
3	GPR12099	Key	1	
4	GPR11708	Drive coupling	1	
5	GPR12101	Bolt, crankshaft pulley	1	
6	GPR11699/2	Flywheel assembly	1	
7	GPR11698	Starter ring	1	
8	50581	Bearing sleeve, flywheel centre	1	
9	GPR11697/1	Flywheel	1	
10	GPR12304/1	Bolt, flywheel	5	
11	GPR11966	Bushing set, undersize	1	0.25mm (0.0098in)
12		C/shaft bushing, with oil groove, standard sizes:		Identification colour:
	GPR12108	Grade 0: 2.000 - 2.004mm (0.0787 - 0.0789 in.)	5	Black
	GPR12109	Grade 1: 2.002 - 2.006mm (0.0788 - 0.0790 in.)	5	Brown
	GPR12110	Grade 2: 2.004 - 2.008mm (0.0789 - 0.0791 in.)	5	Green
	GPR12111	Grade 3: 2.006 - 2.010mm (0.0790 - 0.0791 in.)	5	Yellow
	GPR12112	Grade 4: 2.008 - 2.012mm (0.0797 - 0.0792 in.)	5	Blue
	GPR12113	Grade 5: 2.010 - 2.014mm (0.0791 - 0.0793 in.)	5	Pink
	GPR12115	Grade 6: 2.012 - 2.016mm (0.0792 - 0.0794 in.)	5	Red
13		C/shaft bushing, without oil groove, standard sizes:		Identification Colour:
	GPR12116	Grade 0: 2.000 - 2.004mm (0.0787 - 0.0789 in.)	5	Black
	GPR12117	Grade 1: 2.002 - 2.006mm (0.0788 - 0.0790 in.)	5	Brown
	GPR12118	Grade 2: 2.004 - 2.008mm (0.0789 - 0.0791 in.)	5	Green
	GPR12119	Grade 3: 2.006 - 2.010mm (0.0790 - 0.0791 in.)	5	Yellow
	GPR12120	Grade 4: 2.008 - 2.012mm (0.0791 - 0.0792 in.)	5	Blue
	GPR12121	Grade 5: 2.010 - 2.014mm (0.0791 - 0.0793 in.)	5	Pink
	GPR12122	Grade 6: 2.012 - 2.016mm (0.0792 - 0.0794 in.)	5	Red

CYLINDER HEAD AND ROCKER COVER



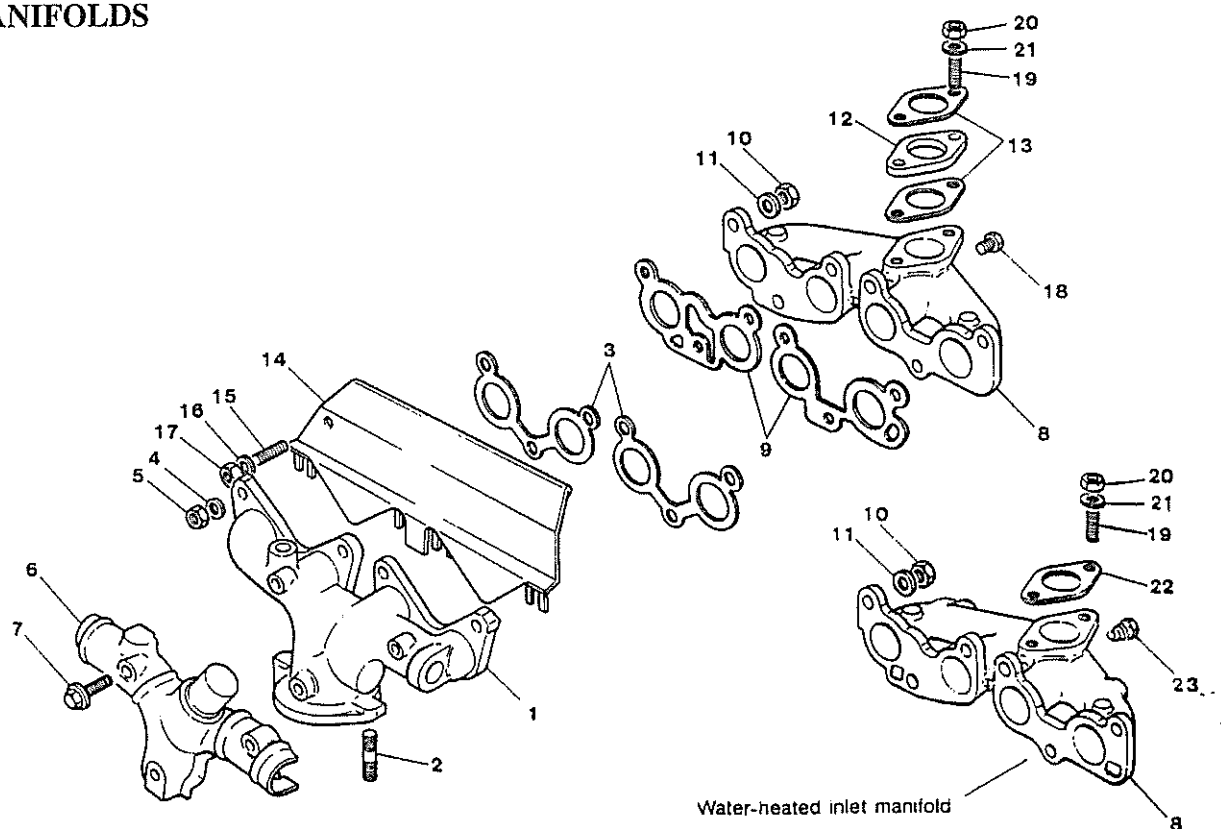
Item No.	Part No .	Description	Qty	Remarks
1	GPR12064	Cylinder head	1	
2	GPR12065	Plug	1	
3	GPR12066	Plug	1	
4	GPR12067	Plug -threaded	2	
5	GPR12068	Plug -threaded	1	
6	GPR12069	Dowel-pin	2	
7	GPR12070	Stud, manifold to cyl. head	5	
8	GPR12071	Stud	6	
9	GPR12701	Stud, manifold to cyl. head	1	
-	MS48/90	Stud, manifold to cyl. head	1	S/No. 2000 - on
10	MS48/16	Stud, heatshield over exhaust	1	
11	GPR12076	Oil seal camshaft	1	
12	GPR12078	Valve seat, exhaust	4	
14	GPR12079	Guide, valve	8	
15	GPR12080	Bolt,cylinder head long	5	
16	GPR12081	Bolt,cylinder head short	5	
17	GPR12082	Plainwasher	10	
18	GPR12083	Cylinder head gasket	1	
19	GPR12086	Cover assembly, rocker valve	1	
20	GPR12087	Rubber, rocker cover	2	
21	GPR12088	Gasket, rocker cover	1	
22	GPR12089	Nut	2	
23	GPR12090	Oil filler cap	1	

CONNECTING ROD AND PISTON



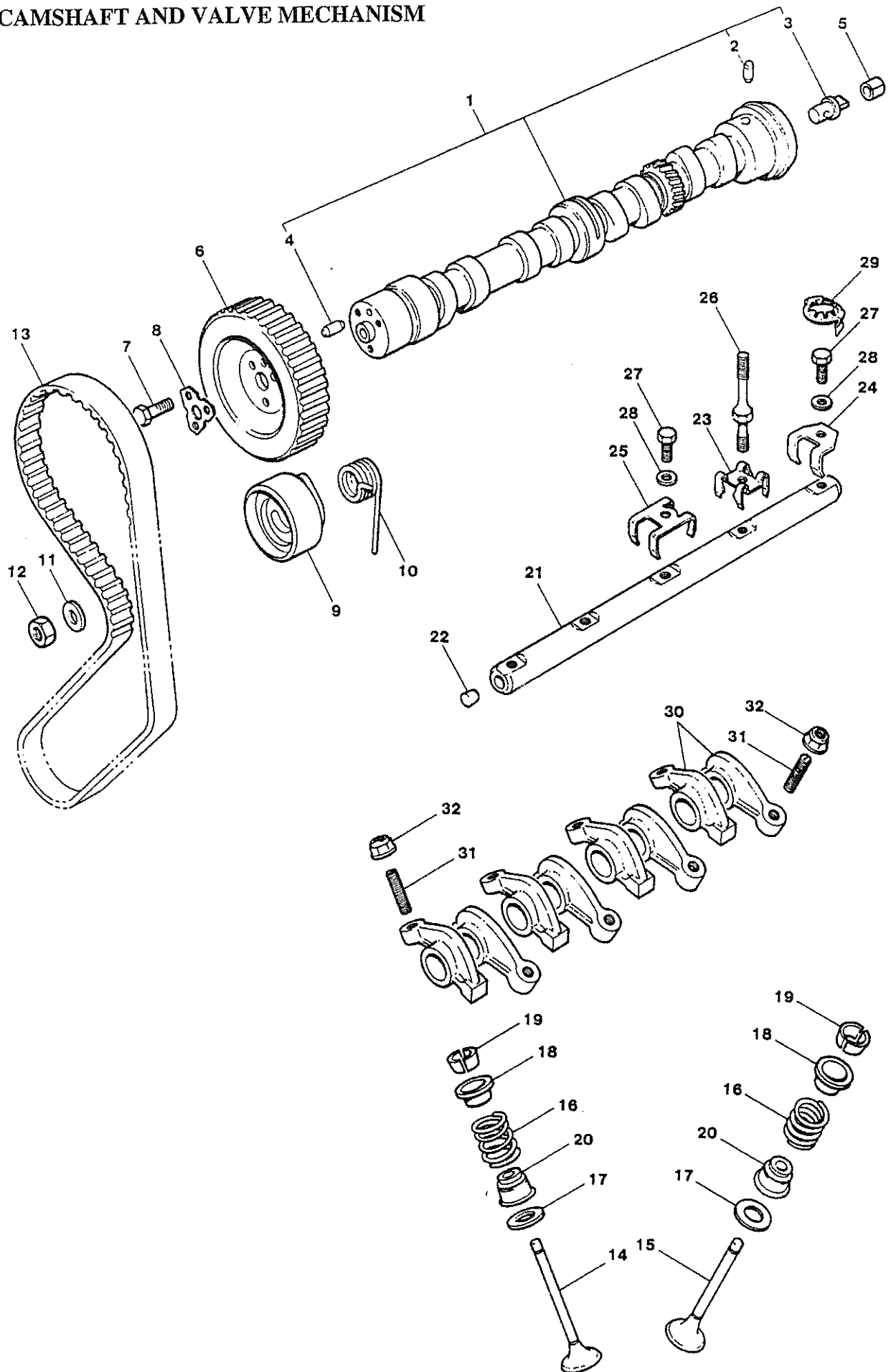
Item No.	Part No.	Description	Qty	Remarks
1	GPR12091	Connecting rod complete	4	
2	GPR11977	Bolt,connecting rod	8	
3	GPR11978	Nut, connecting rod	16	
4		Piston with pin :		
	GPR12092	Grade 1: 67.967-67.977mm (2.6759 - 2.6763in.)	4	
	GPR12093	Grade 2: 67.977-67.987mm (2.6763 - 2.6766in.)	4	
	GPR12094	Grade 3: 36.987-37.997mm (2.6766 - 2.6770in.)	4	Select appropriate piston diameter.
	GPR12095	Grade 4: 67.997-68.007mm (2.6770 - 2.6774in.)	4	
	GPR12096	Grade 5: 68.007-68.017mm (2,6774 - 2.6778in.)	4	
	50662	Oversize 0.20mm (68.167 - 68.217mm) (2.6837 - 2.6857in.)	4	
5	GPR11964	Piston ring set, Grade 1	4	
	50653	Piston ring set, Grade 2,3	4	
	50663	Piston ring set, 0.20mm (0.0079in.) oversize	4	
	GPR11965	Bushing, connecting rod - Standard	8	
6	50664	Bushing, undersize 0.25mm (0.0098in.)	8	

MANIFOLDS



1	GPR12159	Manifold, exhaust	1	
2	GPR12160	Stud	2	Manifold to priming assy
3	GPR12161	Gasket set	1 set	
4	GPR12162	Washer, plain	6	
5	GPR12163	Nut	6	Exhaust manifold
6	GPR12164	Cover	1	
7	GPR12165	Bolt	3	
8	GPR11618	Manifold inlet	1	
-	GPR11618/1	Water-heated inlet manifold	1	S/No. 2000 - on
9	GPR11773/5	Gasket set, inlet	1 set	
10	GPR11773/6	Nut, inlet manifold	Set of 6 each	
11	GPR11773/6	Washer plain		1 set
12	GPR11735	Insulator for carburettor	1	
13	GPD8246	Carburettor gasket	2	On Weber carb. - 3 req'd.
14	50234	Heat shield over exhaust	1	
15	MS48/16	Stud	1	
16	MS25/9	Washer	1	For heat shield
17	MS35/8	Nut	1	
18	51134	Plug, inlet manifold	1	
19	MS48/35	Stud M8	2	Carb.-to-manifold
20	MS35/8	Nut M8	2	
21	MS25/9	Washer M8	2	
22	51257/01	Deflector, carburettor joint	1	For water-heated inlet manifold
23	S111/1	Tapered plug, inlet manifold	2	

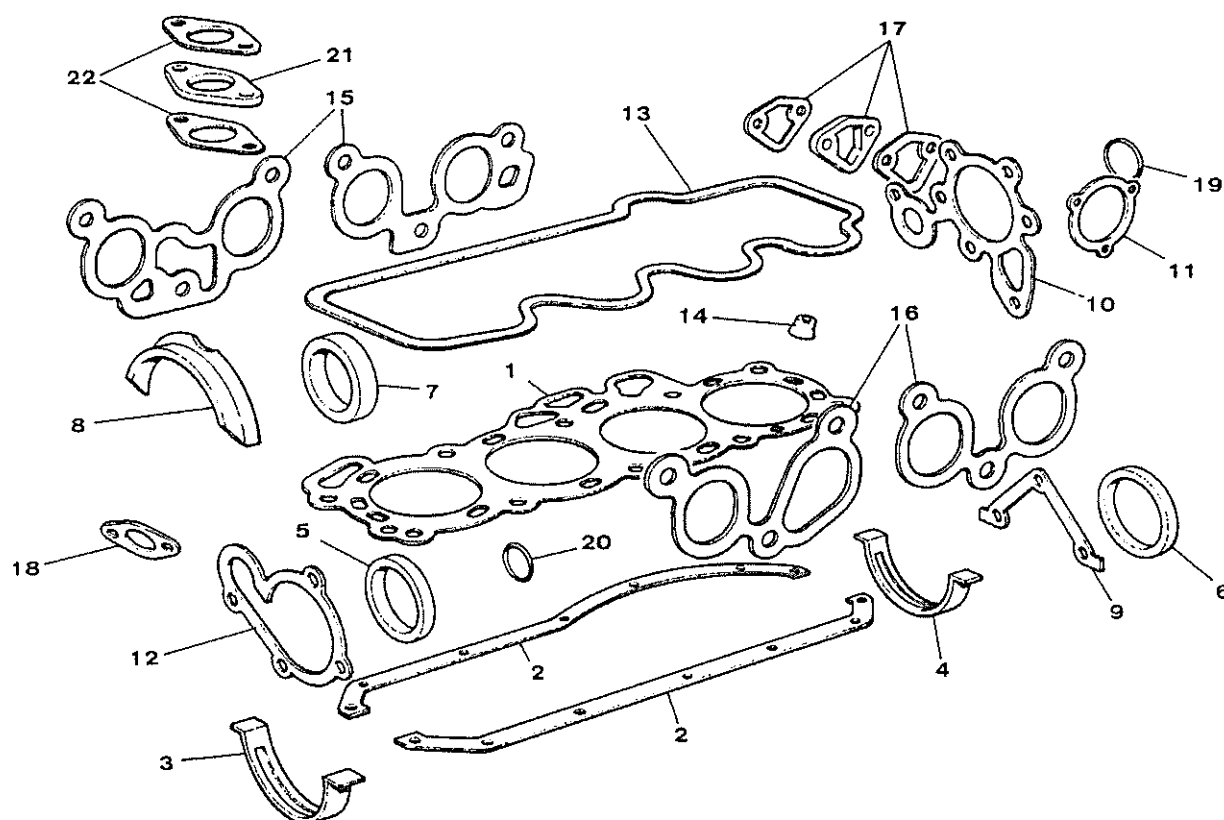
CAMSHAFT AND VALVE MECHANISM



CAMSHAFT AND VALVE MECHANISM

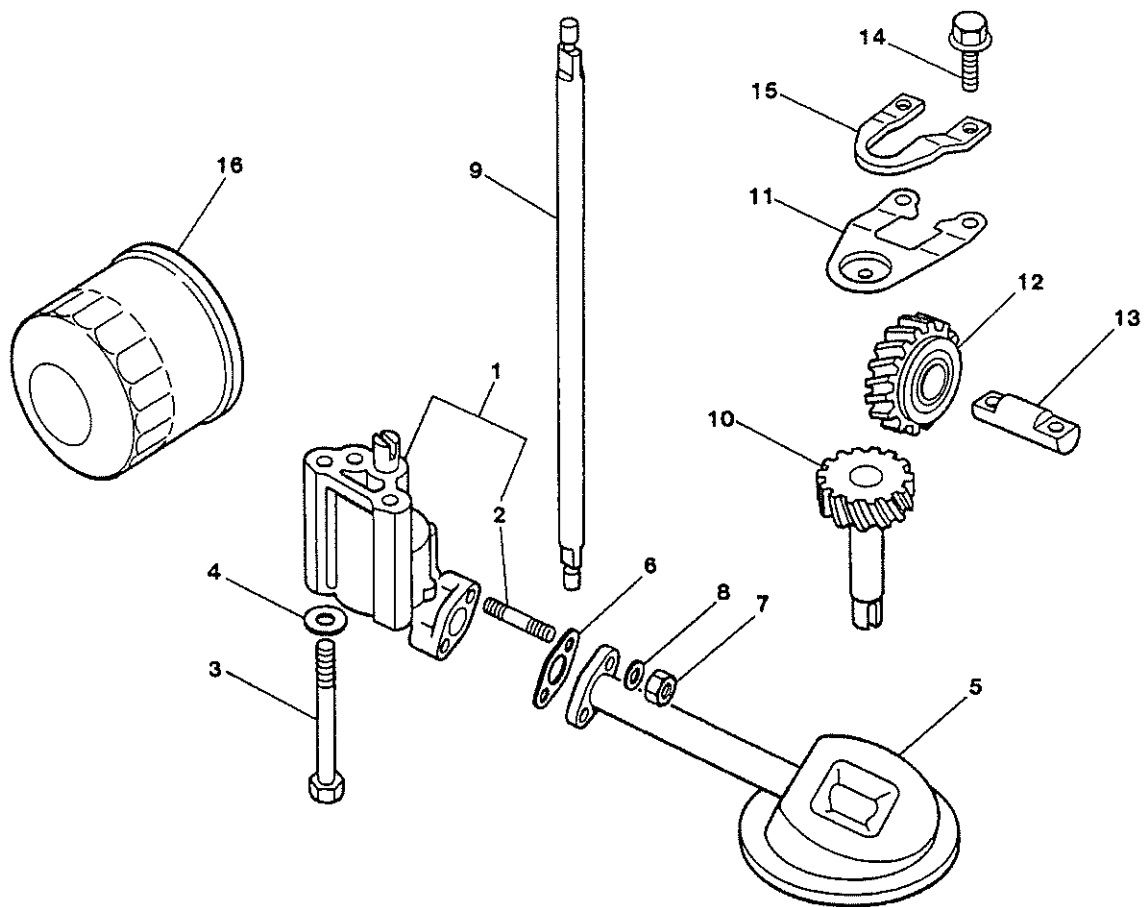
Item No.	Part No.	Description	Qty	Remarks
1	GPR12130	Camshaft assembly	1	
2	GPR12131	Taper plug, camshaft	1	
3	GPR12132	Key, camshaft	1	
4	GPR12133	Dowel, camshaft	1	
5	GPR12134	Retainer, rocker shaft	1	
6	GPR12135	Toothed pulley, camshaft	1	
-	GPR12135/01	Toothed pulley, camshaft	1	S/No. 2000 - on
7	GPR12136	Bolt, camshaft sprocket	3	
8	GPR12137	Lockwasher	1	
9	GPR12138	Tensioner unit	1	
-	GPR12138/1	Tensioner unit	1	S/No. 2000 - on
10	GPR12139	Spring tensioner	1	
-	GPR12139/1	Spring tensioner	1	S/No. 2000 - on
11	GPR12140	Lockwasher	1	
12	GPR12141	Locknut	1	
13	GPR12142	Timing belt (91 teeth)	1	
-	GPR12142/1	Timing belt (107 teeth)	1	S/No. 2000 - on
14	GPR11968	Valve - inlet	4	
15	GPR11969	Valve - exhaust	4	
16	GPR11970	Spring, valve	8	
17	GPR12143	Seat, valve spring	8	Valve spring
18	GPR12144	Retainer	8	
19	GPR12145	Collet	16	
20	GPR11967	Seal, oil valve	8	
21	GPR12146	Shaft, rocker	1	
22	GPR12147	Plug	2	
23	GPR12148	Spring, rocker	2	
24	GPR12149	Retainer, rocker shaft	2	Rocker shaft
25	GPR12150	Retainer, rocker shaft centre	1	
26	GPR12151	Stud, rocker shaft	2	
27	GPR12152	Bolt, rocker shaft	3	
28	GPR12153	Washer, plain	3	
29	GPR12154	Tabwasher	2	
30	GPR12155	Rocker valve	8	
31	GPR12156	Adjusting screw, rocker shaft	8	
32	GPR12157	Locknut, rocker adjust. screw	8	

GASKETS



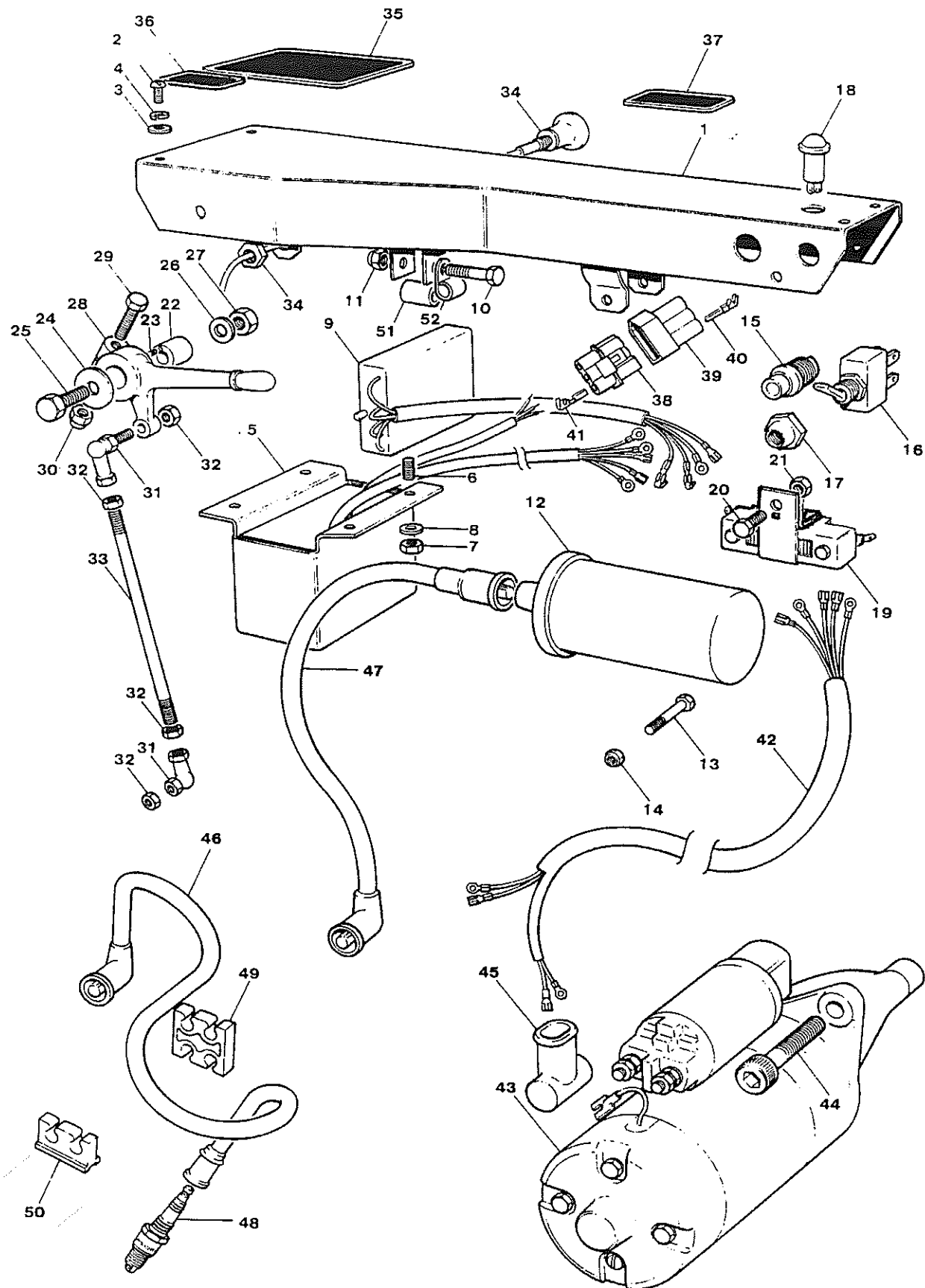
Item No.	Part No.	Description	Qty	Remarks
-	GPR11963	Engine gasket set	1	
-	50062	Decoke gasket set	1	
1	GPR12083	Gasket, cylinder head	1	
2	GPR12029	Gasket set,oil pan,	1	Up to Jan.1986. Replaced by liquid gasket.
3	GPR12030	Seal, oil pan front	1	
4	GPR12031	Seal, oil pan rear	1	
5	GPR12024	Oil seal, crankshaft front	1	
6	GPR12042	Oil seal, crankshaft rear	1	
7	GPR12076	Oil seal, camshaft	1	
8	GPR12040	Gasket, upper dust cover	1	
9	GPR12043	Gasket, oil seal retainer	1	
10	GPR12054	Gasket, thermostat housing	1	
11	GPR12184	Gasket, water outlet	1	
13	GPR12088	Gasket, rocker cover	1	
14	GPR11967	Oil seal, valve	8	
15	GPR11773/5	Gasket, inlet manifold	1	
16	GPR12161	Gasket, exhaust manifold	1	
17	GPR12191	Spacer with gaskets, fuel pump	1	
18	GPR12170	Gasket, oil strainer	1	
19	GPR12226	'O' ring distributor	1	
20	GPR10691	'O' ring, coolant pipe	1	
21	GPR11735	Insulator for carburettor	1	Not included in gasket set
22	GPD8246	Gasket, for above	2	

OIL PUMP AND FILTER



Item No.	Part No.	Description	Qty	Remarks
1	GPR11976	Oil pump	1	
2	GPR12167	Stud	2	
3	GPR12168	Bolt, hexagonal	2	
4	57107	Washer, plain	2	
5	GPR12169	Oil strainer	1	
6	GPR12170	Gasket, oil strainer	1	
7	GPR12171	Nut	2	
8	GPR12037	Washer, spring	2	
9	GPR12173	Spindle, oil pump drive	1	
10	GPR12174	Gear, pump drive	1	
11	GPR12175	Spring, oil regulator	1	
12	GPR12176	Idler gear	1	
13	GPR12177	Shaft, idler gear	1	
14	GPR12178	Bolt	2	
15	GPR12179	Spindle support	1	
16	GPR11971	Oil filter	1	

IGNITION SYSTEM - EARLY TYPE: FRONT CROSS-MEMBER AND STARTER MOTOR



IGNITION SYSTEM - EARLY TYPE: FRONT CROSS-MEMBER AND STARTER MOTOR

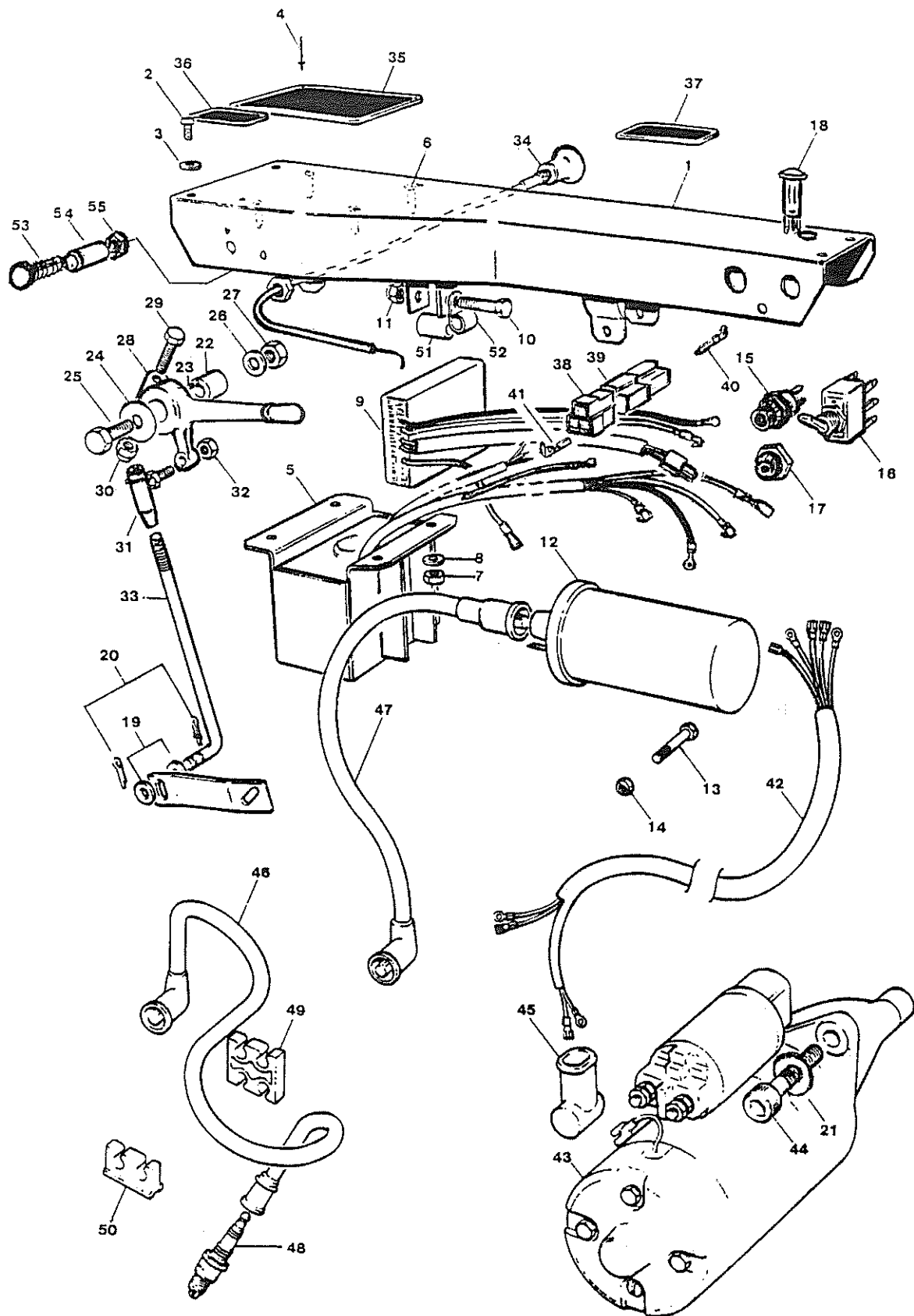
Item No.	Part No.	Description	Qty	Remarks
1	GPR12319/1	Front cross member	1	
2	MS170/40	Screw, cross-member to cradle	4	
3	MS125/7	Washer, for above	4	
4	MS29/5	Spring washer	4	
5	50232	Alternator control box	1	50232/01from S/No.0508
6	MS74/512	Stud, for control box	4	
7	MS41/3	Nyloc nut	4	
8	MS25/6	Washer	4	
9	50233	Ignition box	1	50233/01from S/No.0508
10	MS16/35	Bolt	1	
11	MS41/4	Nut	1	
12	GPR11773/7	Ignition coil	1	
13	MS16/30	Bolt	1	
14	MS41/4	Nyloc nut	1	
15	9905	Starting button	1	
16	FWMP6074	Ignition switch	1	
17	FWMP7522	Switch seal	1	
18	DFP8837	Lampholder with 12 volt bulb	1	Includes red cover.
19	GPR11773/9	Ballast resistor	1	Deleted from S/No.0508
20	MS04/16	Screw	1	
21	MS41/4	Nyloc nut - also locknut MS36/7	1	
22	GP531	Bearing, throttle lever	1	
23	S65/D5	Spring tension pin	1	
24	FWP1098	Mounting washer	1	
25	MS17/35	Bolt	1	
26	MS25/9	Washer	1	
27	MS41/5	Nyloc nut	1	
28	FWP1177/1	Throttle lever	1	For Weber Carb. Fitted from S/No. 0193
29	M16/30	Bolt	1	
30	MS41/4	Nyloc nut	1	
31	FWP1188	Ball joint	2	
32	S18/2C	Locknut	4	
33	GPC3562/10	Throttle link	1	
34	FWP1184/8U	Choke control	1	
35	50463	Instruction plate	1	
-	DSM8135/1	Rivets	4	
36	GPR4861/5	Plate on throttle	1	

Continued

IGNITION SYSTEM - EARLY TYPE: FRONT CROSS-MEMBER AND STARTER MOTOR (Continued)

Item No.	Part No.	Description	Qty	Remarks
37	50464	Plate on switch	1	
38	50386/03	Socket moulding	1	Alternator lead
39	50385/03	Pin moulding	1	
40	50383	Pin	3	
41	50384	Socket	3	
42	50235	Wiring harness	1	50235/01 from S/No.0508
43	GPR11773/1	Starter motor	1	
44	MS65/35	Screw, socket head	2	
45	9994	Insulation boot	1	
46	GPR12195	Cable set, high-tension	1	From Oct.1985 only cable set GPR 12195 available - individual cables no longer supplied.
47	GPR11773/8	Cable, ignition coil-to-distributor	1	
48	GPR11975	Spark plug	4	
49	GPR12205	Clamp cable	1	
50	GPR12206	Clamp, cable	1	
-	50830	Wire,red - charge lamp to starter switch	1	Deleted from S/No.0508
-	50618	Wire,red - resistor to ignition switch	1	
-	50389	Wire,black - ignition switch -to - earth on resistor bolt	1	
51	51083	Spacer	1	
52	7853/6	Cable clip	1	

IGNITION SYSTEM - LATER TYPE: FRONT CROSS-MEMBER AND STARTER MOTOR



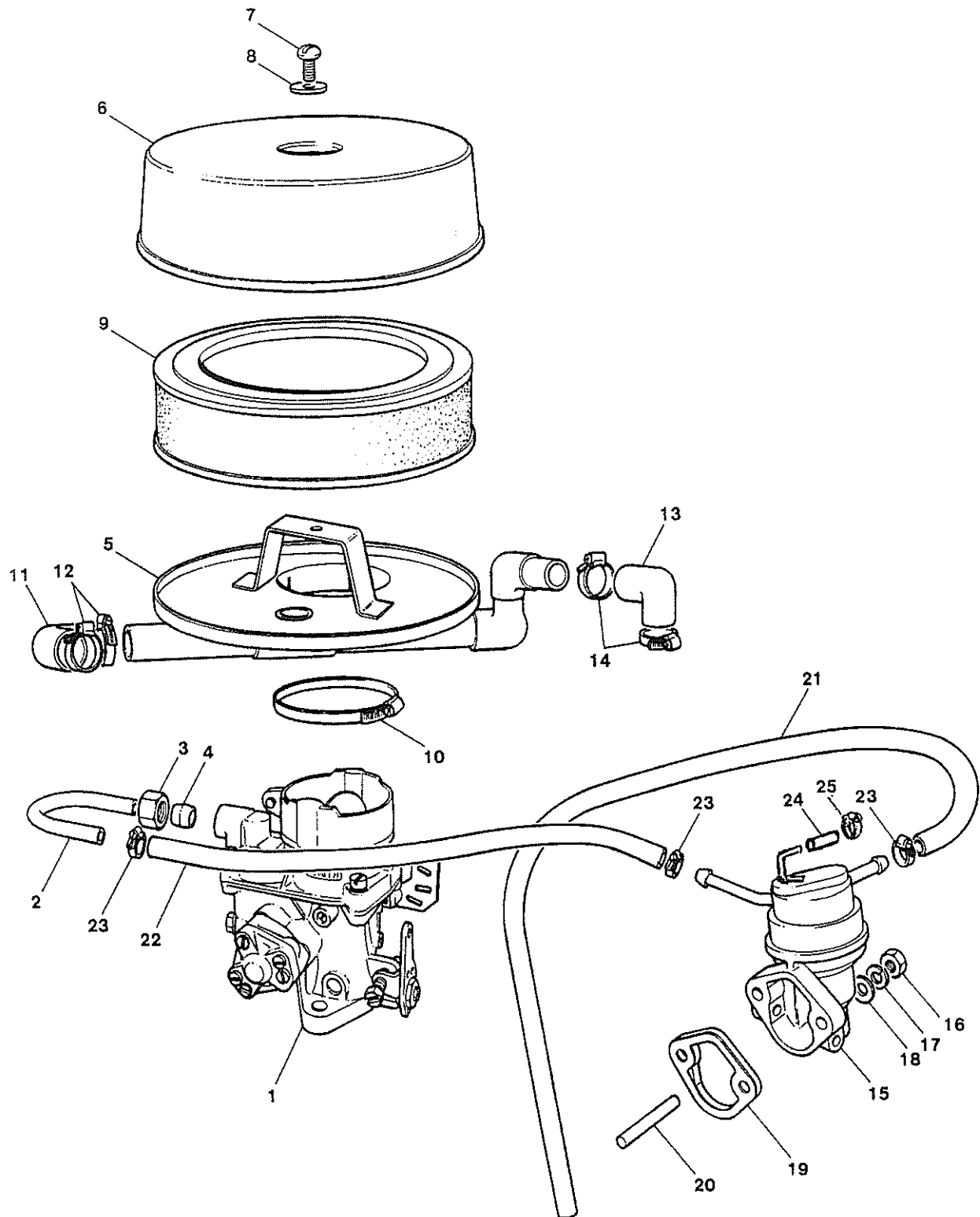
IGNITION SYSTEM - LATER TYPE: FRONT CROSS-MEMBER AND STARTER MOTOR

Item No.	Part No.	Description	Qty	Remarks
1	GPR12319/1	Front cross-member	1	
2	MS170/40	Screw	4	Cross-member to cradle
3	MS125/7	Washer	4	
4	DSM8135/1	Rivet	4	Instruction plate to cross-member
5	50232/01	Alternator control box	1	
6	MS75/512	Stud M5,captive, control box	4	In cross member
7	MS41/3	Nut M5, self-locking	4	Alternator control box
8	MS25/6	Washer M5	4	To cross-member with Items 6 & 8.
9	50233/03	Ignition control box	1	
10	MS16/35	Bolt M6, hex head	1	Ignition control box
11	MS41/4	Nut M6 self-locking	1	Clamp
12	GPR11773/17	Ignition coil (electronic ignition)	1	Fits into clamp on cross-member
-	54276	Ignition coil fittings	1	
13	MS16/30	Bolt M6	1	Ignition coil clamp
14	MS41/4	Nut M6	1	
15	9905	Starting switch, push-button	1	
16	FWMP6074	Ignition switch	1	
17	FWMP7522	Switch seal	1	For ignition switch
18	DFP8837	Lampholder +12V bulb		Includes red cover
19	S21/2C	Washer	2	
20	MS78/13	Split pin	2	
21	MS25/10	Washer M10	2	Use with Item 44
22	CF531	Bearing, throttle lever	1	
23	S65/D5	Spring tension pin	1	
24	FWP1098	Mounting washer 1.0in O/D	1	
25	MS17/35	Bolt M8	1	
26	MS25/9	Washer M8	1	
27	MS41/5	Nut M8 self-locking	1	
28	FWP1177/1	Throttle lever	1	For Weber Carburettor
29	MS16/35	Bolt M6	1	
30	MS41/4	Nut M6, self-locking	1	
31	FWP1188	Ball joint 2BA snap-lock	1	
32	S18/2C	Locknut	2	
33	51113/01	Throttle link,Weber carb.	1	
34	51114	Choke control. Weber carb.	1	
35	50463	Instruction plate	1	
36	GPR4861/5	Instruction plate, throttle	1	
37	50464	Instruction plate, switch	1	
38	54893/09	Connector, male-alternator lead	1	
39	54893/10	Connector, female-wiring harness	1	

IGNITION SYSTEM - LATER TYPE: FRONT CROSS-MEMBER AND STARTER MOTOR (Continued)

Item No.	Part No.	Description	Qty	Remarks
40	54893/01	Terminal (male) spade	3	
41	54893/02	Terminal (female) Lucar	3	
42	50235/03	Wiring harness	1	
43	GPR11773/1	Starter motor	1	
44	MS65/35	Screw M10 socket head	2	With Item 21
45	9994	Insulation boot	1	
46	GPR12195	Cable set H.T.	1	Set only supplied
47	GPR11773/8	Ignition lead, coil-to-distributor	1	
48	GPR11975	Spark plug	4	
49	GPR12205	Clamp, cable	1	
50	GPR12206	Clamp cable	1	
51	51083	Spacer	1	Ignition control box clamp
52	7853/6	Cable clip	1	
53	MS03/20	Bolt	1	Throttle stop
54	51115	Sleeve	1	(Weber carburettor)
55	MS39/3	Nut M5, self-locking	1	

CARBURETTOR - 1ST TYPE AND FUEL PUMP



CARBURETTOR - 1ST TYPE AND FUEL PUMP

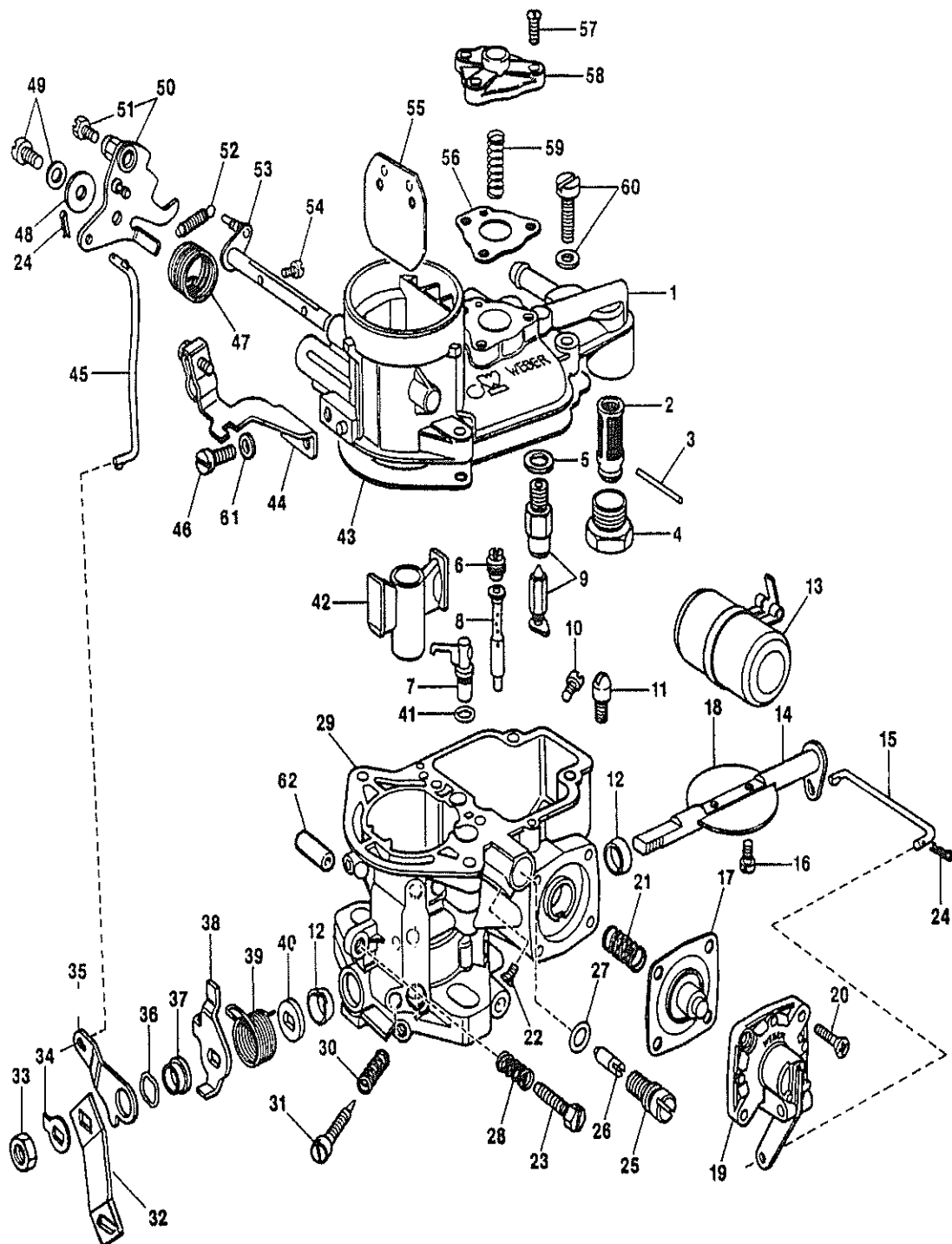
Item No.	Part No.	Description	Qty	Remarks
1	GPR8239/2 *	Carburettor - Solex	1	* IMPORTANT
-	—	Slow running screw	1	From S/No. 0193, March
-	—	Spring for screw	1	1986 - New carburettor
-	—	Volume control screw	1	fitted 10720/02 - Weber.
-	—	Spring for screw	1	Note:
-	—	Gasket for throttle body	1	A complete kit is
-	—	Washer for needle valve	1	available - Part No.
-	—	Gasket for float chamber cover	1	51249 which includes
-	—	'O' ring, pump injector	1	all parts to convert from
-	—	'O' ring, idle tube	1	old Solex carb. to new
-	—	Washer for main jet	1	Weber carb.
-	—	Washer for needle valve	1	
-	—	Float assembly	1	
-	—	Pump injector 45	1	
-	—	Idle tube 50	1	Part of GPR 8239/2
-	—	Emulsion tube/air correction		
		jet 165	1	
-	—	Main jet 110	1	
-	—	Needle valve 1.3	1	
-	—	Economy jet 55	1	
2	GPR12328	Carb. inlet pipe	1	
3	FWMP8271	Nut, for above	1	
4	S40/2	Olive for carburettor inlet pipe	1	
5	GPR12325/01	Base, air cleaner	1	
6	GPR12326/1	Cover, air cleaner	1	
7	MS170/40	Screw, for above	1	
8	MS125/7	Washer, for above	1	
9	GPR12324	Element, air cleaner	1	
10	MS81/8	Clip, air cleaner to carburettor	1	
11	50443	Elbow, rocker cover to air cleaner	1	
12	MS81/3	Clip, for above	2	
13	GPR12335	Elbow (Rocker cover to air cleaner)	1	
14	MS81/3	Clip, for above	2	

See next page for Fuel Pump Assembly

FUEL PUMP ASSEMBLY

Item No.	Part No .	Description	Qty	Remarks
15	GPR11972	Fuel pump (2-port, early models)	1	Note: 3-port version requires addition of Items 24 and 25.
16	GPR12188	Nut	2	
17	GPR12189	Spring washer	2	
18	GPR12190	Plain washer	2	
19	GPR12191	Spacer with gaskets	1	Fuel pump
20	GPR12192	Stay	1	
21	GPC8857/10	Fuel pipe, tank-to-pump	1	
22	50656	Fuel pipe, fuel pump-to-carb.	1	
23	MS81/2	Clip for above pipe	3	
24	53987	Cap, fuel pump	1	Pump 2000 - on and when fitting current pump to earlier models
25	53988	Clip for cap	1	

CARBURETTOR - 2ND TYPE



CARBURETTOR - 2ND TYPE

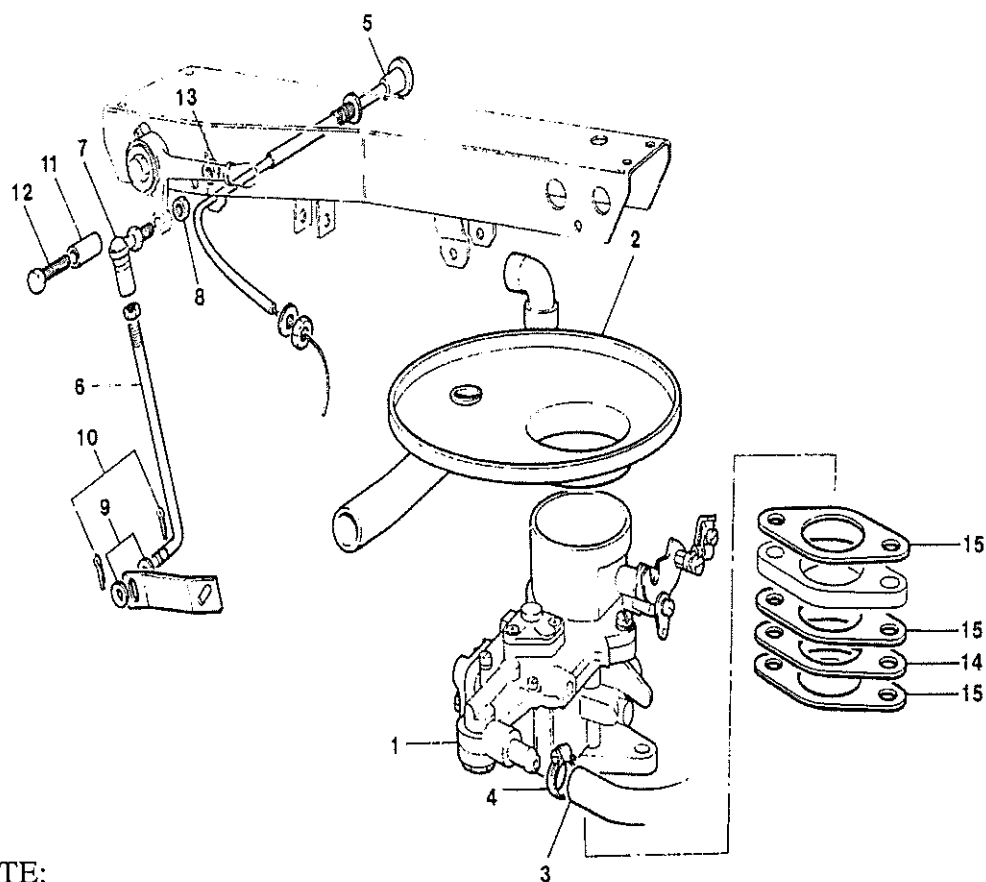
Item No.	Part No.	Description	Qty	Remarks
-	10717	Carb. assy-Weber 34ICH (2nd Type)	1	
1	51183	Top casting, carburettor	1	
2	51184	Filter	1	
3	51185	Hinge pin, float	1	
4	51186	Plug,filter	1	
5	51187	Washer, needle valve	1	
6	51188	Air corrector jet	1	
7	51189	Pump jet	1	
8	51190	Emulsifying tube	1	
9	51191	Needle valve	1	
10	51248	Main jet (size 132)	1	
11	51192	Intake valve	1	
12	51193	Seal, throttle shaft	2	
13	51194	Float	1	
14	51195	Shaft, throttle	1	
15	51196	Rod,throttle shaft-to-acceleration pump	1	
16	51197	Screw, butterfly-to-throttle shaft	2	
17	51198	Diaphragm, acceleration pump	1	
18	51199	Butterfly	1	
19	51200	Cover	1	
20	51201	Screw, pump cover	4	Acceleration pump
21	51202	Spring, acceleration pump	1	
22	51203	Grub screw, idle jet	1	
23	51204	Screw, throttle stop	1	
24	51205	Split pin	2	
25	51206	Retaining screw, idle jet	1	
26	51207	Idle jet	1	
27	51208	Washer, idle jet	1	
28	51209	Spring, throttle stop screw	1	
29	-	Not supplied separately	-	
30	51210	Spring	1	Idle volume control
31	51211	Screw	1	
32	51112/01	Throttle lever	1	
33	51212	Nut	1	Throttle shaft
34	51213	Spacer	1	
35	51214	Lever	1	
36	51215	Wave washer	1	
37	51216	Bush	1	
38	51217	Plate, throttle stop	1	
39	51218	Spring, throttle shaft	1	
40	51219	Spacer/washer	1	
41	51220	Seal	1	
42	51221	Auxiliary venturi	1	

Continued

CARBURETTOR - 2ND TYPE - (Continued)

Item No.	Part No.	Description	Qty	Remarks
43	51222	Gasket	1	
44	51223	Bracket, choke cable	1	
45	51224	Rod, linkage	1	
46	51225	Screw	1	
47	51226	Spring, choke shaft	1	
48	51227	Washer	1	
49	51228	Screw mounting	1	
50	51229	Lever	1	Choke cam
51	51230	Screw, lever		
52	51231	Spring, small	1	Choke lever-to-choke shaft
53	51232	Choke shaft	1	
54	51233	Screw, choke shaft	2	
55	51234	Butterfly choke	1	
56	51235	Diaphragm	1	
57	51236	Screw for Item 58	3	Air correction
58	51237	Cover	1	
59	51238	Spring diaphragm	1	
60	51239	Screw, carburettor cover	4	
61	MS25/7	Washer M6	1	
62	GPR12339	Blanking sleeve	1	Vacuum pipe connections
—	54151	Repair kit (Weber 34ICH)	1	

CARBURETTOR - 2ND TYPE: CONTROLS



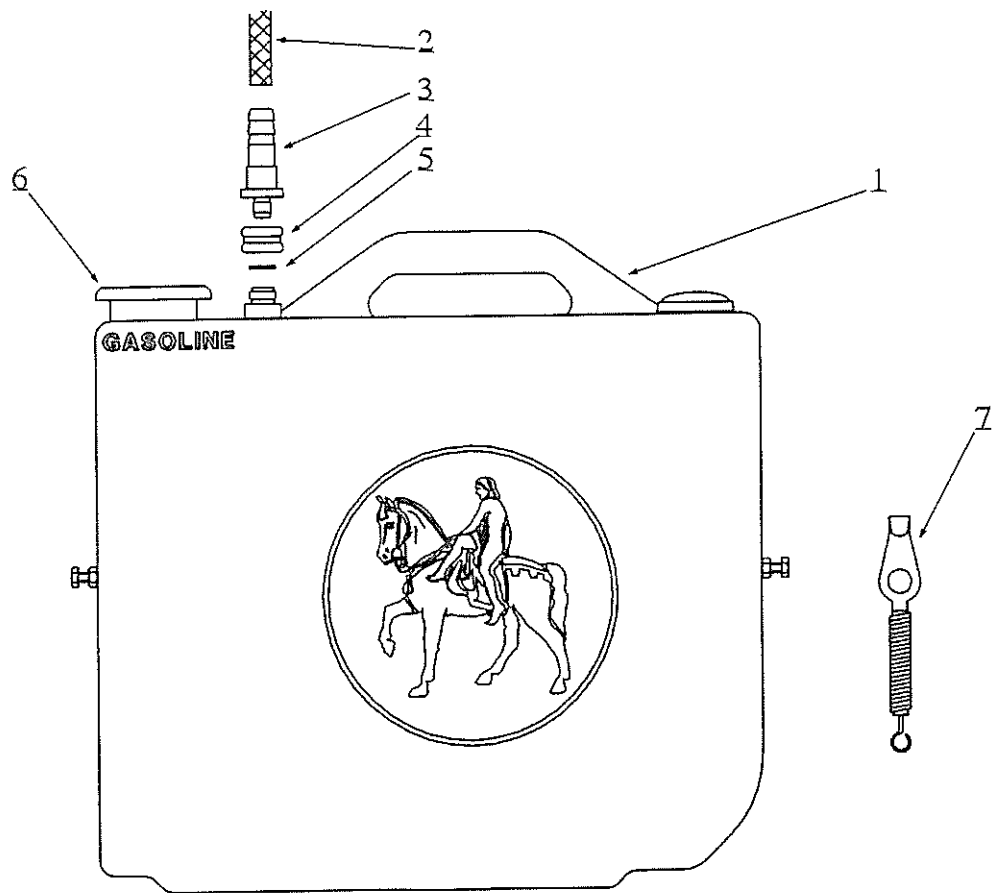
NOTE:

From Pump Serial number 0194, March 1986, Solex carburettor GPR8239/2 deleted, replaced by Weber carburettor 10720/02.

Use the following parts for the Weber carburettor:

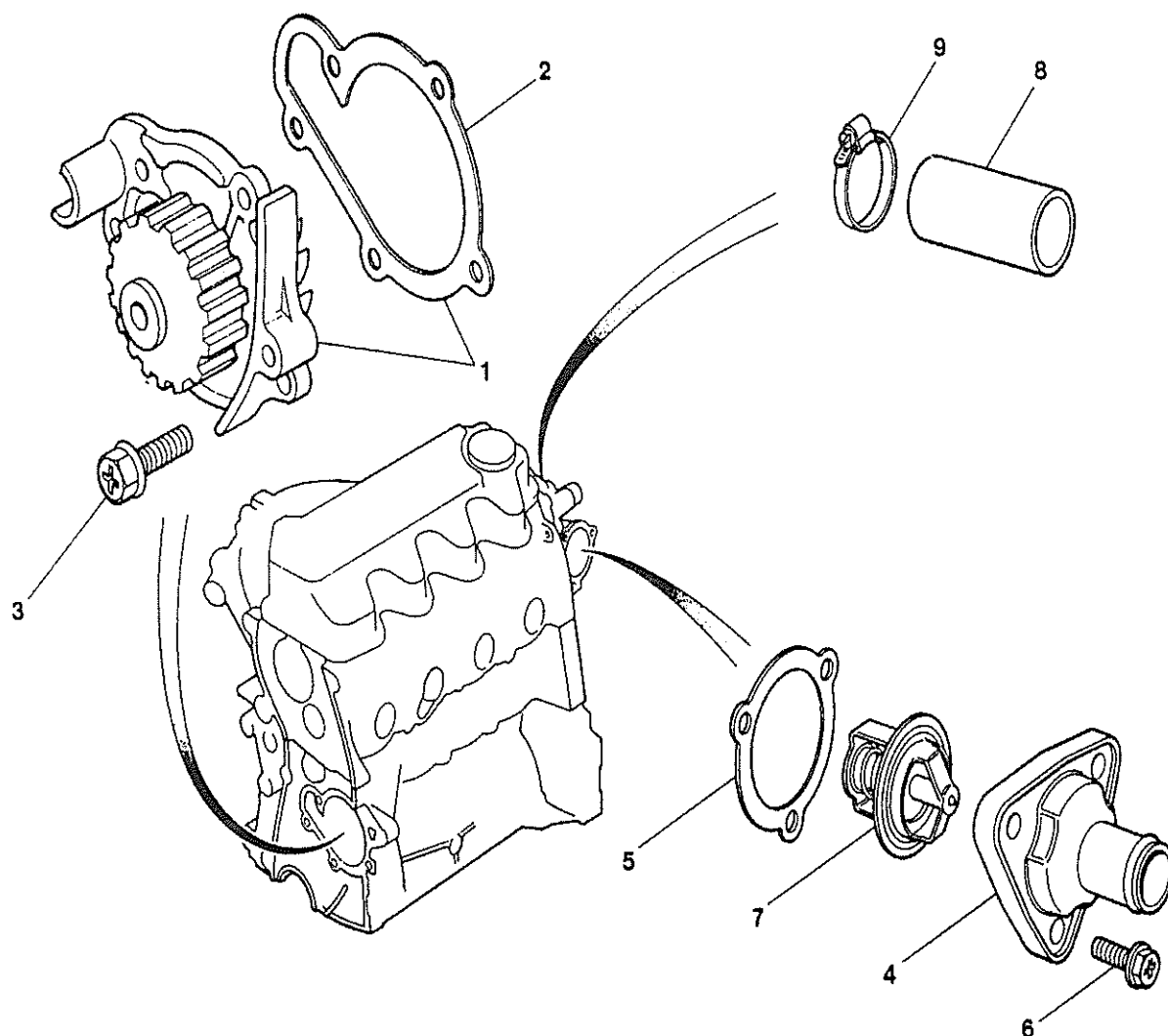
Item No.	Part No.	Description	Qty	Remarks
1	10720/02	Carburettor - Weber *	1	
2	GPR12325/01	Base, air cleaner	1	
3	GPC8857/1	Hose	1	Fuel pump to carb.
4	GPC8861	Clip, hose	2	
5	51114	Choke, control	1	
6	51113	Throttle link	1	
7	FWP1188	Ball joint, throttle link	1	* For complete service replacement order Kit No. 51249
8	S18/2C	Locknut, throttle link	2	
9	S21/2C	Washer, throttle link	2	
10	MS78/13	Split pin, throttle link	2	
11	51115	Sleeve	1	Operating lever stop on cross-member
12	MS03/20	Bolt	1	
13	MS39/3	Nut	1	
14	51257	Deflector, (below spacer)	1	Between carburettor and manifold.
15	GPD8246	Gasket for use with deflector	3	

FUEL TANK



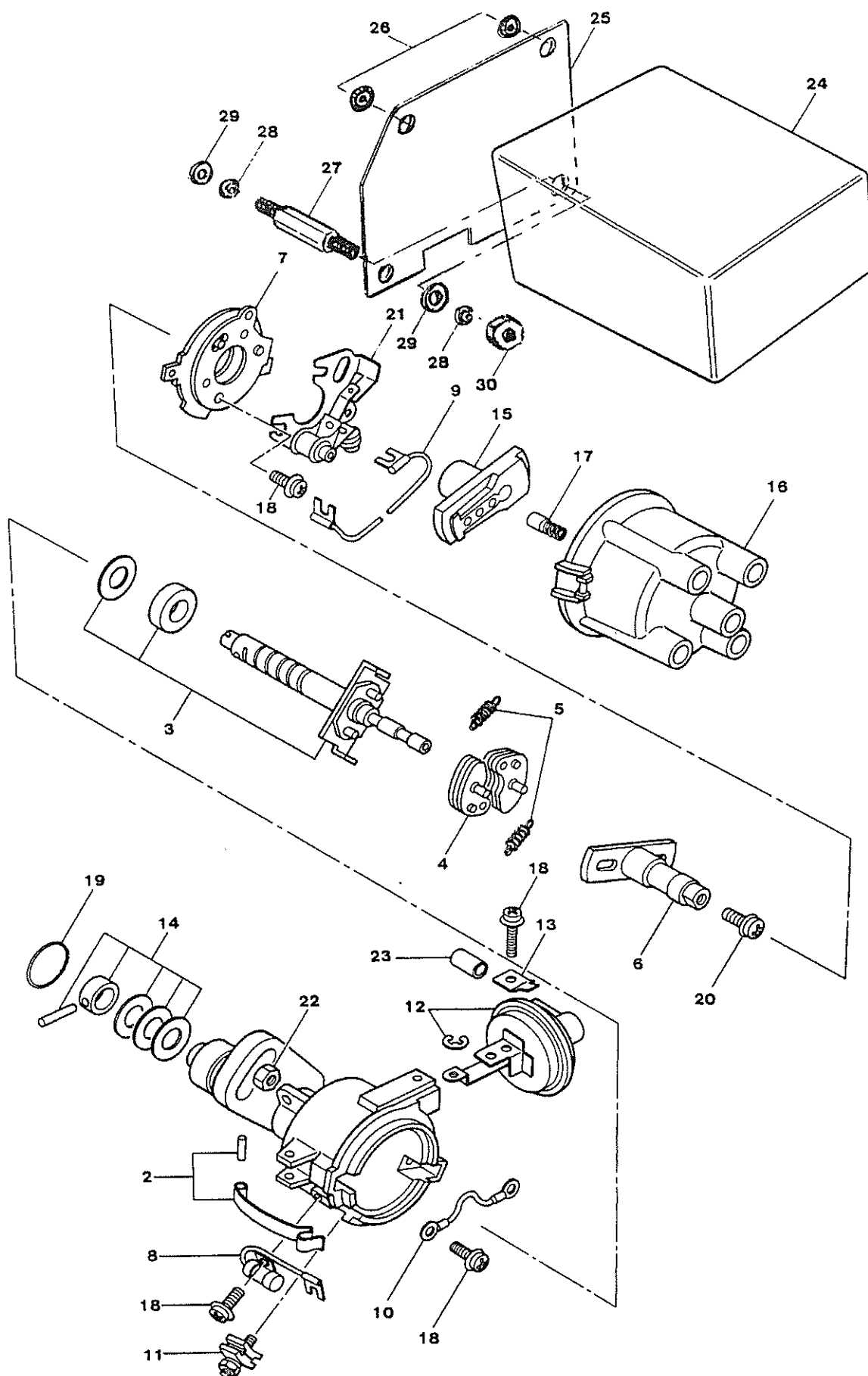
Item No.	Part No.	Description	Qty	Remarks
1	50654/03	Fuel tank	1	Replaces tank 50086/03
2	53429/01	Fuel pipe	1	
3	51015	Hose connector	1	
4	51020	Nut - valve	1	
5	51021	Sealing washer	1	
6	FWP2050/1	Filler cap assy	1	Included with No 1 - fits both tanks
7	FWHP3777	Fastener, fuel tank	2	

WATER PUMP AND THERMOSTAT



Item No.	Part No.	Description	Qty	Remarks
1	GPR11973	Water pump	1	
-	GPR11973/1	Water pump	1	S/No. 2000 - on
2	GPR12181	Gasket, water pump	1	
3	GPR12182	Screw	5	
4	GPR12183	Water outlet	1	
5	GPR12184	Gasket, water outlet	1	
6	GPR12185	Screw	3	
7	GPR11773/11	Thermostat	1	
8	50367/04	Hose	1	Rear of thermostat housing
9	MS81/3	Clip, for above	2	

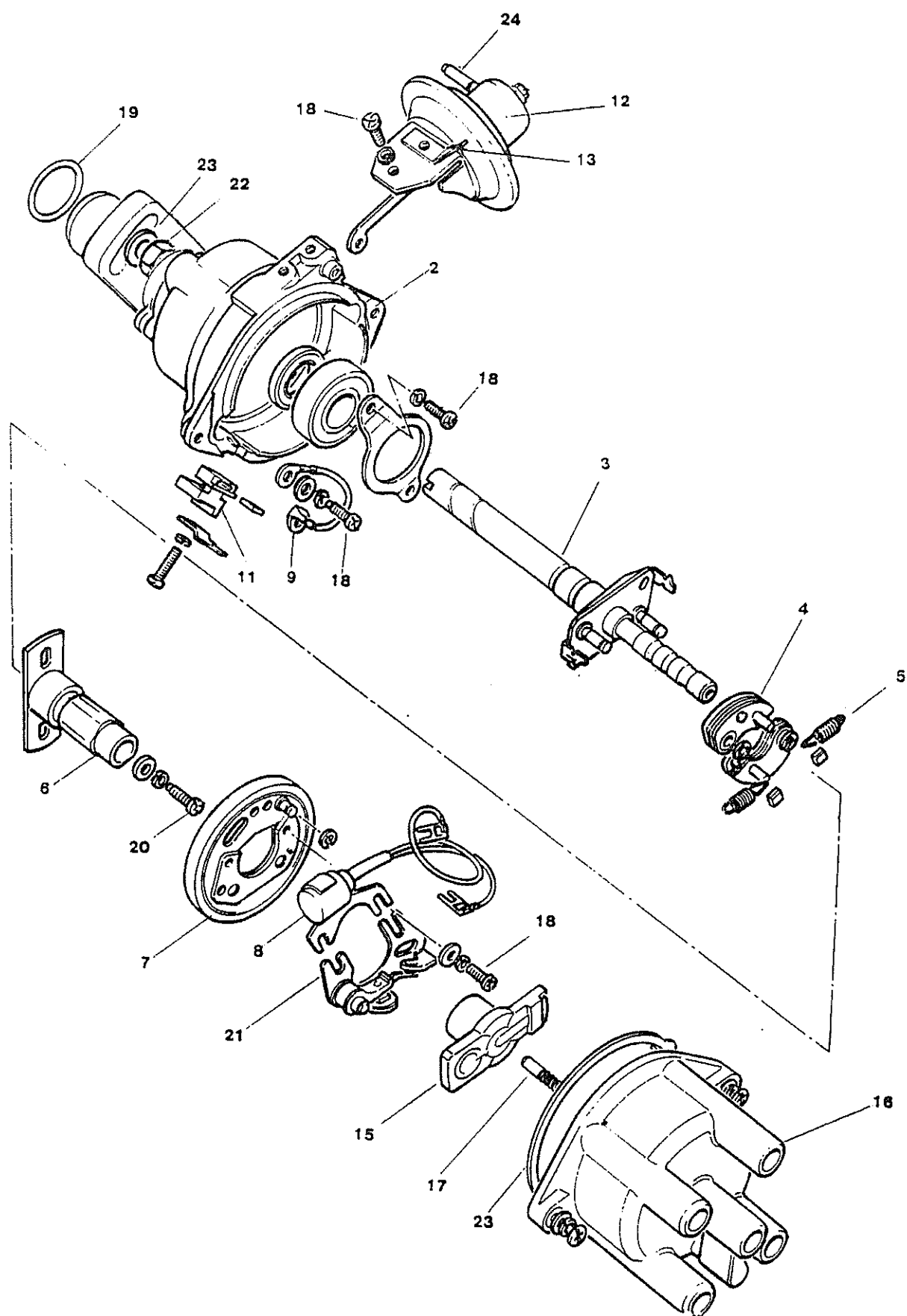
DISTRIBUTOR - 1ST TYPE



DISTRIBUTOR - 1ST TYPE

Item No.	Part No.	Description	Qty	Remarks
1	GPR12212	Distributor assembly	1	Includes Items 2-22 Mounted externally
2	GPR12213	Clamp, cap set	1	
3	GPR12214	Shaft assembly	1	
4	GPR12215	Weight, governor	2	
5	GPR12216	Spring, governor	2	
6	GPR12217	Cam set	1	
7	GPR12218	Plate assembly, breaker	1	
8	GPR11985	Condenser	1	
9	GPR12219	Wire	1	
10	GPR12220	Wire - earth (ground)	1	
11	GPR12221	Terminal	1	
12	GPR12222	Vacuum control	1	
13	GPR12223	Terminal earth (ground)	1	
14	GPR12224	Coupling set	1	
15	GPR11982	Rotor head	1	
16	GPR11981	Distributor cap	1	
17	GPR11983	Carbon point	1	
18	GPR12225	Screw kit (set of three)	1	
19	GPR12226	'O' ring	1	
20	GPR12227	Screw	1	
21	GPR 11984	Contact set	1	
22	GPR12228	Nut	1	
23	GPR12339	Blanking sleeve (on vacuum advance)	1	
24	50090	Distributor cover (4 pegs)	1	Note: Items 25-30 and Pt/No. 50090/01 distributor cover - fitted from 18.5.87
-	50090/1	Distributor cover (2 pegs)	1	
25	51475	Support plate	1	
26	50087	Grommet	2	Support plate
27	51479	Stud	1	Support plate -to -engine
28	MS29/5	Spring washer M6	2	
29	MS25/7	Washer M6	2	
30	MS35/7	Nut M6	1	

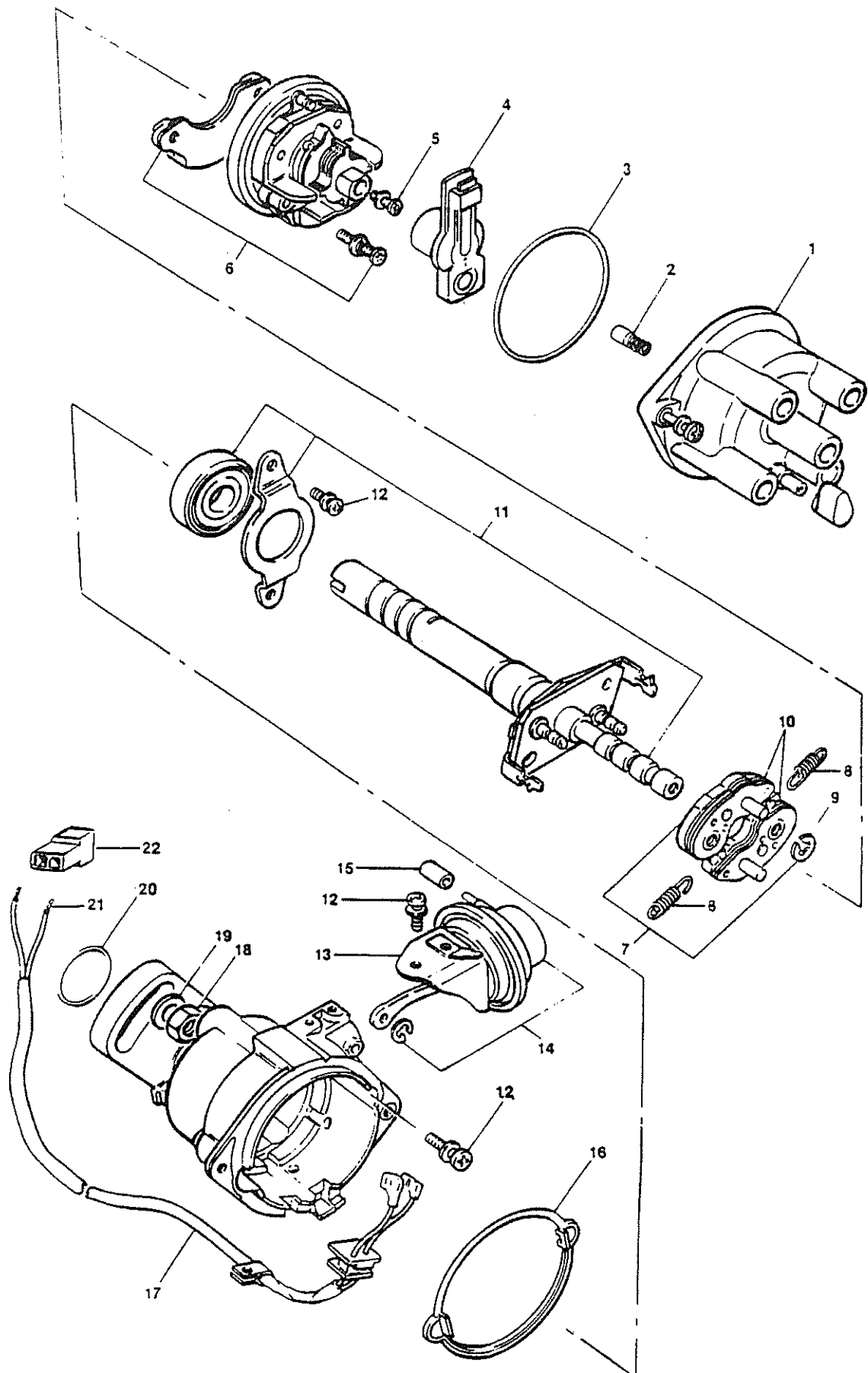
DISTRIBUTOR - 2ND TYPE



DISTRIBUTOR - 2ND TYPE

Item No.	Part No.	Description	Qty	Remarks
1	52922	Distributor assembly	1	
2	52858	Distributor housing assembly	1	
3	52859	Shaft assembly	1	
4	GPR12215	Weight governor	2	
5	GPR12216	Spring governor	2	Twin-wire type
6	52860	Cam set	1	
7	52861	Plate assembly, breather	1	
8	52862	Condenser assembly	1	
9	52863	Wire assembly	1	
10	—	Not used	-	
11	52864	Terminal	1	
12	—	Control assembly - vacuum	1	
13	GPR12223	Terminal earth (ground)	1	
14	—	Not used	-	
15	52865	Rotor head	1	
16	52866	Distributor cap	1	
17	GPR11983	Point assembly, carbon	1	
18	GPR12225	Screw kit (set of three)	1	
19	52867	'O' ring	1	
20	GPR12227	Screw	1	
21	GPR11984	Contact set	1	
22	52868	Nut	1	
23	52869	Packing	1	Between cap and distributor body
24	GPR12339	Blanking sleeve, vacuum		

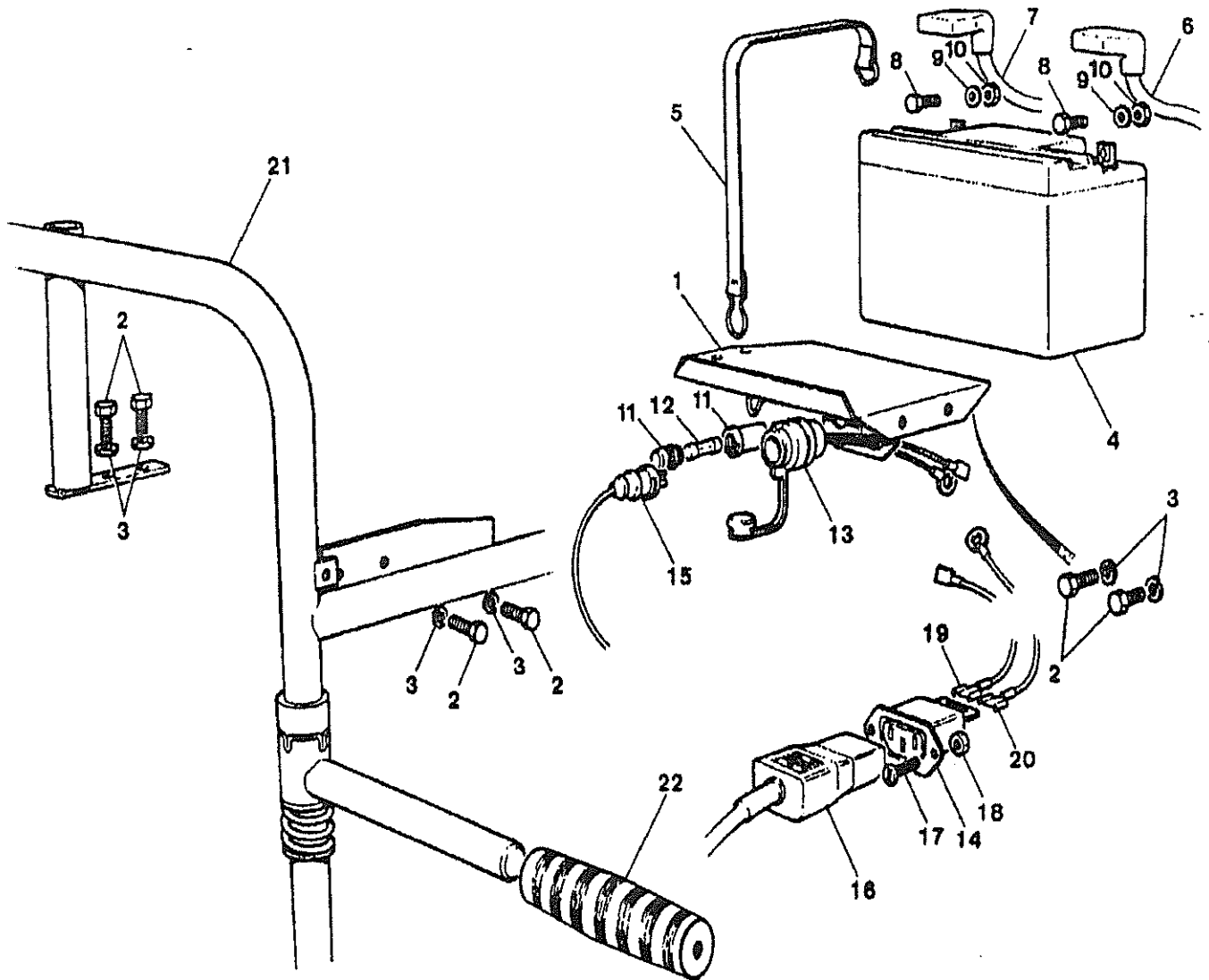
DISTRIBUTOR - 3RD TYPE



DISTRIBUTOR - 3RD TYPE

Item No.	Part No .	Description	Qty	Remarks
-	GPR12212/1	Distributor assembly	1	Electronic - S/No. 2000 - on and includes Items 1 - 17
1	55417	Distributor cap	1	Includes Item 2
2	55418	Carbon point	1	
3	55419	Packing	1	
4	55420	Rotor head	1	
5	55421	Screw	1	
6	55422	Pick-up set	1	
7	55423	Governor set	1	Includes Items 8-10
8	55424	Spring governor	2	
9	55425	Snap ring	2	
10	55426	Governor weight	2	
11	55427	Shaft assembly	1	
12	55428	Screw	4	
13	55429	Earth (ground) terminal	1	
14	55430	Vacuum control	1	
15	GPR12339	Blanking sleeve, vacuum - mounted	1	
16	55431	Unit setter	1	
17	55432	Wiring harness, distributor	1	
18	GPR12228	Nut M8	1	
19	MS25/9	Washer M8	1	
20	55433	'O' ring, distributor to engine	1	
21	54893/01	Terminal	2	
22	54893/05	Connector (male 3-way)	1	

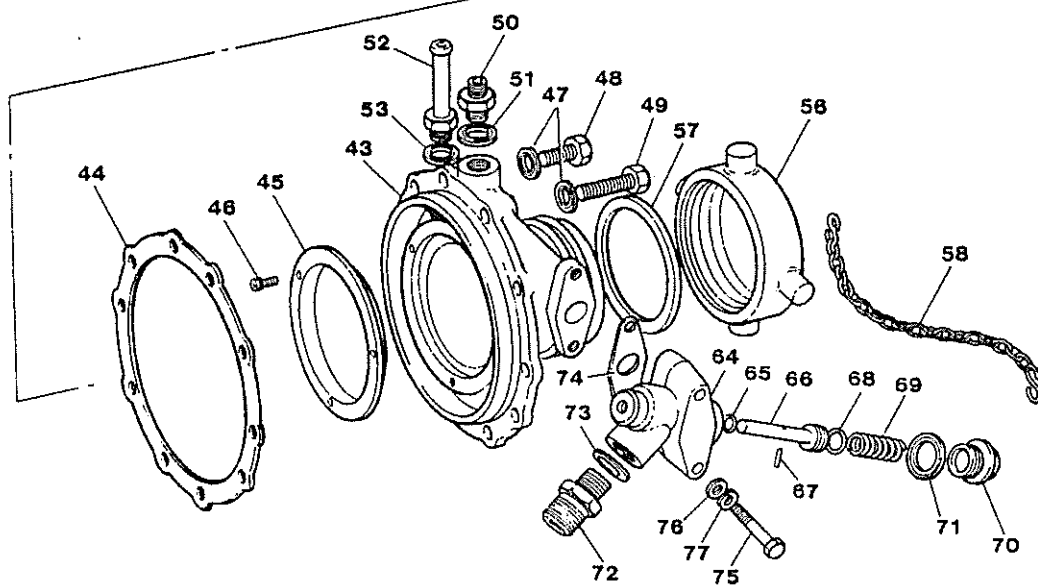
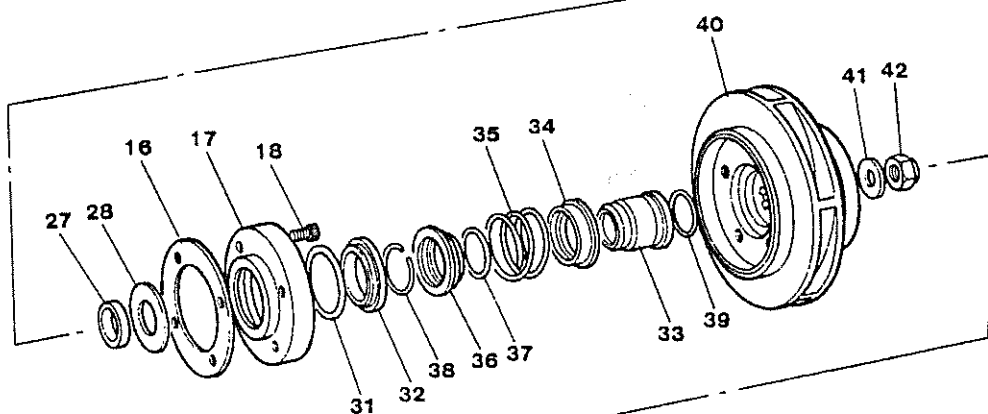
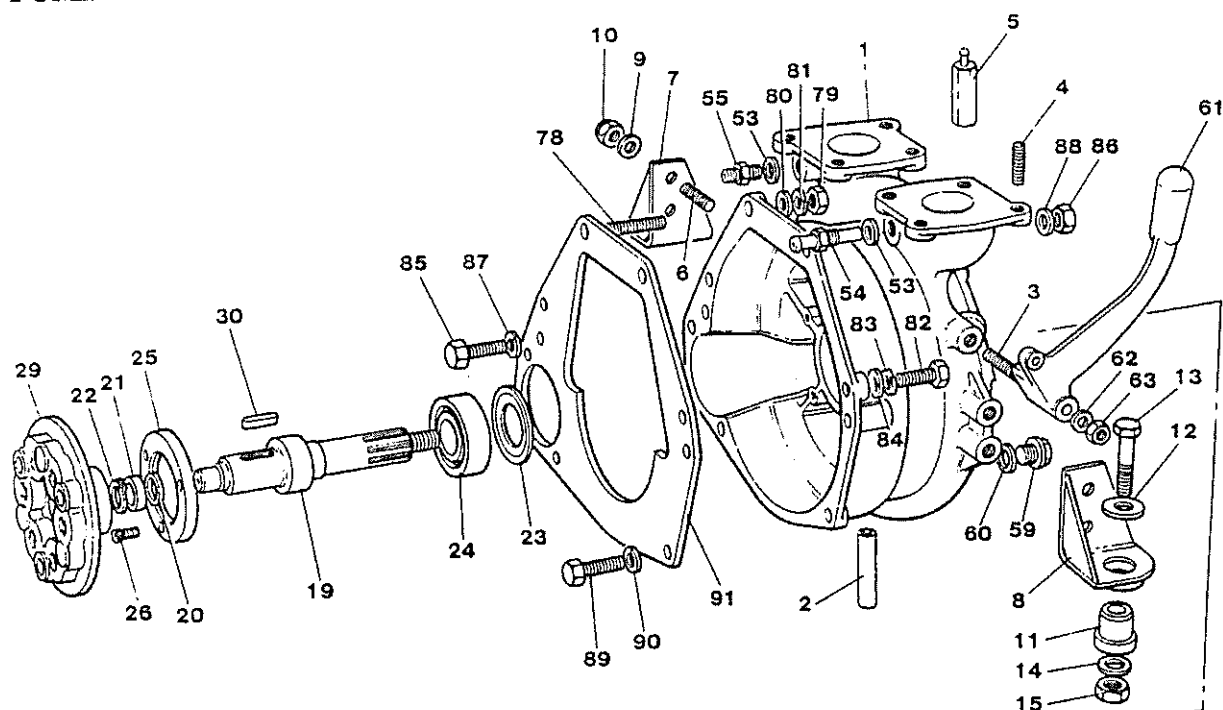
BATTERY CARRIER AND CRADLE



BATTERY CARRIER AND CRADLE

Item No.	Part No.	Description	Qty	Remarks
1	GPR11736	Battery carrier	1	
2	MS104/12	Screw	5	
3	MS125/7	Spring washer	5	
4	GPR11767	Battery	1	'Varta'
5	GPR11796/1	Strap, battery	1	
-	50722	Rivet, battery strap	2	
6	GPR6046/12	Lead, battery-to-earth (ground)	1	Black
7	GPR6046/18	Lead battery-to-starter	1	Red
8	MS04/12	Screw M6	2	
9	MS25/7	Washer M6	2	
10	MS35/7	Nut M6	2	
11	GPF9452	Fuse holder	1	Fits all battery carriers
12	GPF9453	Fuse, 10 Amp	1	
-	50658	Earth (ground) lead	1	Battery-carrier to engine
13	50462/02	Socket (round type)	1	
14	51594	Socket (rectangular type)	1	From S/No.0476
15	50462/01	Plug (round type) supplied separately	1	New socket replacement kit No. 648 includes all items and new- design battery carrier.
16	51586	Plug (rectangular type) from S/No. 0476	1	
17	MS72/30	Screw	2	
18	MS35/4	Nut	2	
19	51592	Wire - red to fuse	* 1	* Also required to fit rectangular plug and socket.
20	51593	Wire - black to earth (ground)	1	
21	GPR11738/3	Cradle	1	
22	50096	Handle grip	2	
-	50694	Rubber strip, on cradle	2	For fuel tank

PUMP



PUMP

Item No.	Part No.	Description	Qty	Remarks
-	50247	Pump assembly (Alum.)	1	
-	50247/01	Pump assembly (Bronze)	1	Note: For bronze pumps please quote Serial Number and material when ordering
1	GPR11643/1	Volute body (Alum.)	1	
-	GPR11643/2	Volute body (Bronze)	1	
-	MS182/11	Helicoil insert M8	10	
-	MS182/9	Helicoil insert M6	4	
2	GPR12329	Drain tube	1	
3	MS49/60	Stud - priming	1	
4	MS49/30	Stud - delivery valve	8	
5	50089	Column stud, distributor cover support	4	Note: Qty 2-off for use with new distributor cover-Pt/No. 50090/01 as fitted to pumps from 18.5.87
6	MS48/16	Stud-mounting bracket	4	
7	50083	Pump mounting bracket (RHS)	1	
8	50084	Pump mounting bracket (LHS)	1	
9	MS25/9	Washer M8	4	
10	MS41/5	Nut M8	4	
11	GTBD10938	Mounting rubber	2	
12	10714	Washer	4	
13	MS18/50	Belt, pump mounting-end	2	
-	50441/03	Plastic bolt cap	2	
-	50285	Stud, engine mounting-end	1	
14	MS25/10	Washer M10	2	
15	MS41/6	Nut M10	2	
16	GPR11713	Joint for wear ring	1	
17	GPR11688	Wear ring, rear	1	
18	MS163/12	Screw, skt hd for above	4	
19	GPR11702/1	Pump drive shaft	1	
20	50652	Washer, felt	1	
21	50580	Spherical bearing, rear	1	
22	50584	Circlip - for above	1	
23	50516	Washer	1	
24	GPR11714	Bearing, main	1	
25	50515	Clamp ring	1	
26	MS63/16	Screw M6,socket head	3	Clamping-to-volute
27	GPR 11716/1	Distance piece	1	
28	GPR11717	Water flinger	1	
29	50507	Coupling	1	

Continued

PUMP (Continued)

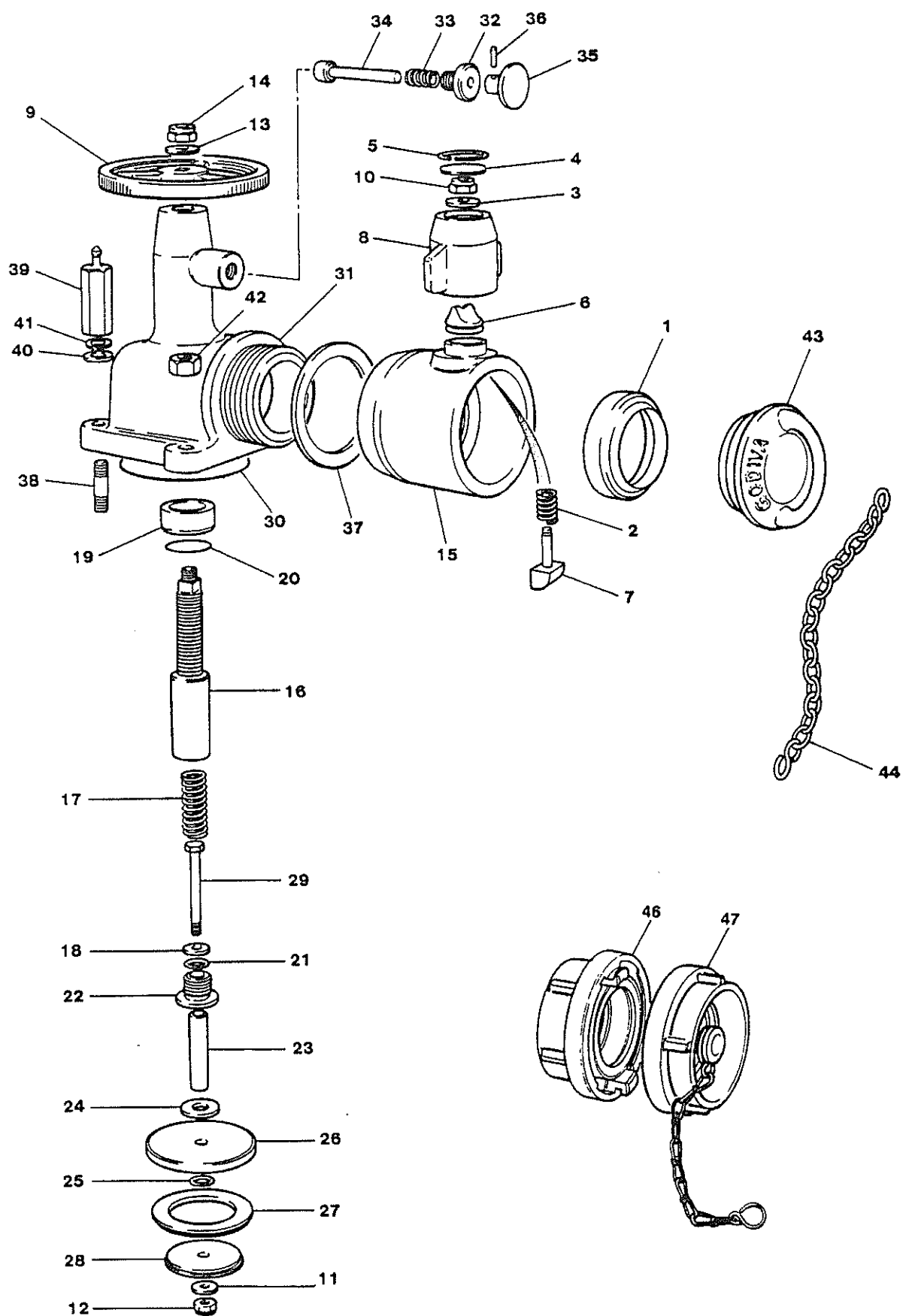
Item No.	Part No.	Description	Qty	Remarks
31	FWP1112/1	'O' ring	1	
32	FWP1111	Sealing element, carbon	1	
33	GPC7902	Seal sleeve	1	
34	FWP1115	Spring abutment washer	1	
35	FWP1116	Spring	1	
36	FWP1114	Seal, seating ring	1	
37	FWP1113/1	'O' ring	1	
38	FWP1117	Circlip	1	
39	GPC7905	'O' ring	1	
40	GPR11658	Impeller (Alum)	1	
-	GPR11658/1	Impeller (Bronze)	1	
41	FWMP3557	Washer - for impeller	1	
42	MS41/8	Nut - for impeller	1	
43	GPR11644	Suction tube (Alum)	1	
-	GPR11644/1	Suction tube (Bronze)	1	
44	50300	Joint - for suction tube	1	
45	GPR11696	Wearing ring - front	1	
46	MS163/12	Screw, skt hd - for above	3	
47	MS33/8	Bonded seal	10	
48	MS105/25	Screw	8	Suction tube-to-volute
49	MS105/45	Screw - top	2	
50	GPR12363	Pipe connector	1	
51	UFP2303/7	Sealing washer	1	
52	9357	Hose connector	1	
53	UFP2303/5	Sealing washer	3	
54	FWMP4828/1	Hose connector	1	
55	FWP1121/1	Union 1/4 in BSP	1	
56	FWP2004	Suction tube cap (Alum)	1	
-	UFP7362	Suction tube cap (Bronze)	1	
57	FP318	Suction tube washer	1	
58	FWP1062	Chain - suction tube cap	1	
-	FWMP5443	Storz blank cap 110mm	1	When fitted
-	FWMP5438/1	Storz connector 110mm	1	When fitted
59	FWP1059/1U	Plug	1	
60	UFP2303/7	Sealing washer	1	
61	50076	Priming lever	1	
62	MS25/10	Washer	2	
63	MS41/6	Nut	1	
-	50299	Priming valve assembly	1	
64	50068	Body - priming valve (Alum)	1	
-	50068/01	Body - priming valve (Bronze)	1	
65	FWMP3568	'O' ring, priming valve	1	
66	GPF8500/1	Valve	1	
67	GPF8492	Dowel	1	
68	GPF8526/1	'O' ring	1	

Continued

PUMP (Continued)

Item No.	Part No.	Description	Qty	Remarks
69	50045	Spring	1	
70	50196	Plug	1	
71	UFP2303/10	Sealing washer	1	
72	FWMP3593	Union	1	
73	S41/10	Sealing washer	1	
74	GPR11769	Joint	1	Priming valve-to-
75	MS17/60	Bolt	2	suction tube
76	MS25/9	Washer M8, plain - for above	2	
77	MS29/6	Washer M8, spring - for above	2	
78	MS48/35	Stud M8, top	2	Pump-to-engine
79	MS35/8	Nut M8 - for above	2	
80	MS25/9	Washer M8, plain - for above	2	
81	MS29/6	Washer M8, spring - for above	2	
82	MS17/75	Bolt M8 (for Alum. units)	1	Pump-to-engine
-	MS17/70	Bolt M8 (for Bronze units)	1	Pump-to-engine
83	MS29/6	Washer M8, spring - for above	1	
84	MS25/9	Washer M8	1	
85	50311	Bolt M8	1	Pump-to-engine
86	MS35/8	Nut M8 - for above	1	
87	MS29/6	Washer M8, spring -for above	1	
88	MS25/9	Washer M8, plain - for above	1	
89	MS05/12	Screw M8 - for above	1	
90	MS29/6	Washer M8, spring	1	
91	GPR11642	Plate, rear engine	1	
-	FWP 1096	Spacer	1	

DELIVERY VALVES (EARLIER MODEL)



DELIVERY VALVES (EARLIER MODELS)

Item No.	Part No..	Description	Qty	Remarks
-	10266/2	Delivery valve (Alum.)	2	From 02/93 55662
-	10705/3	Delivery valve (Bronze.)	2	From 02/93 55920
1	FWP1003A	Sealing ring	2	
2	FWP1040	Spring	2	
3	FWP1243	Lockwasher (Alum.)	2	
-	FWP1243/1	Lockwasher (Bonze)	2	
4	FWP1244	Closure disc (Alum.)	2	
-	FWP1244/1	Closure disc (Bronze)	2	
5	THM10094	Spring ring	2	
6	FWP1246	Cam-pressure release (Alum.)	2	Not supplied separately from connector body
-	THM10095/B	Cam-pressure release (Bonze)	2	
7	THM10096/1	Bolt-pressure release (Alum.)	2	
-	THM10096/1B	Bolt-pressure release (Bronze)	2	
8	FWP1248	Cap-pressure release (Alum.)	2	
-	THM10097/B	Cap-pressure release (Bronze)	2	
9	FWP8274	Handwheel 4in.	2	
10	FWP8215	Nut 5/16in U.N.C	2	
11	MS125/7	Washer 6mm	2	
12	MS141/4	Nut M6	2	
13	MS126/9	Washer M8	2	
14	MS141/5	Nut M8	2	
-	THM10724	Instantaneous connector assembly (Alum.)	2	From 02/95 56559 Comprises Items 2,3,4,8,10 and 15
-	FWP8207/1	Instantaneous connector assembly (Bronze)	2	From 02/95 56559/01
15	THM10766	Instantaneous connector body assembly (Alum.)	2	Includes Item 6
-	THM10724/B	Instantaneous connector body assembly (Bronze)	2	
16	10687	Spindle	2	
17	10688	Spring valve spindle	2	
18	10689	Washer	2	
19	10690	Spindle bush	2	
20	10691	'O' ring	2	
21	10692	Washer, anti-friction	2	
22	10693	Guide bush	2	
23	10694	Guide tube	2	
24	10695	Washer, anti-friction	2	
25	10696	'O' ring	2	
26	10697	Valve seal mounting	2	

Continued

DELIVERY VALVES (Continued)

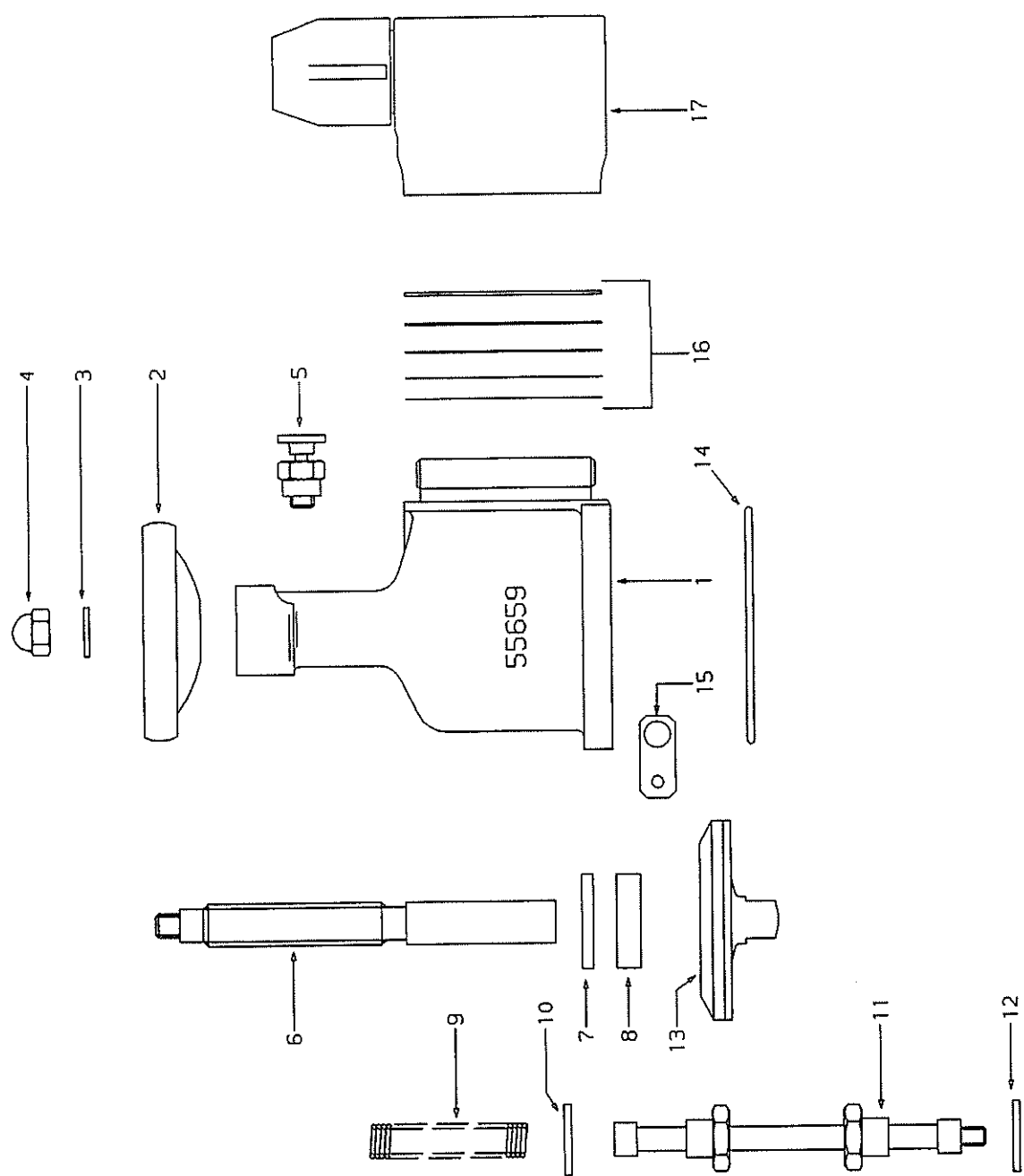
Item No.	Part No.	Description	Qty	Remarks
27	10698	Valve seal	2	
28	10699	Retaining disc (Alum)	2	
-	10699/1	Retaining disc (Bronze)	2	
29	MS116/8	Bolt M6	2	
30	10701	'O' ring	2	
31	9595	Body, delivery valve (Alum.)	2	
-	9595/1	Body, delivery valve (Bronze)	2	
32	10702	Plunger guide	2	
33	10614	Spring	2	
34	10626	Plunger release	2	
35	11655	Release knob	2	
36	S124/E5	Spirol pin	2	
37	SATHM10722	Shim pack	2	Contains 1 of each - as listed
-	THM10722	Shim .002in	2	
-	THM10722/1	Shim .005in	2	
-	THM10722/2	Shim .010in	2	As required
-	THM10722/3	Shim .030in	2	
-	THM10722/4	Shim .060in	2	
38	MS49/30	Stud	4	
39	50089/02	Column stud, cover support	4	Note: 2off } For pumps with 4off } distributor cover- 4off } Pt/No. 50090/01- 2off } fitted, these } quantities } apply.
40	MS25/10	Washer M10	8	
41	MS29/7	Spring Washer M10	8	
42	MS35/9	Nut M10	6	
43	2415	Blank cap	2	Optional extra
44	TH4749	Chain	2	Optional extra
45	54051	'O' ring	2	Use with Continental delivery valve
46	FWMP5439	Storz connector 75mm	2	When fitted
47	FWMP5444	Storz blank cap 75mm	2	When fitted

Note:

New instantaneous connectors added to delivery valves. Effective from April 1987 for aluminium valves and November 1987 for bronze valves.

All parts interchangeable between old and new designs - except for Items 3,7 and 10.

DELIVERY VALVES (LATER MODELS)



DELIVERY VALVES (LATER MODEL)

Item No.	Description	Part No.	Qty (per valve)	
-	Delivery valve assembly 2 1/2in. BSP (Aluminium)	55659	1	
-	Delivery valve assembly 2 1/2in. BSP (Bronze)	55659/01	1	
1	Valve body (Aluminium)	56469/01	1	
-	Valve body (Bronze)	56469/14	1	
2	Hand wheel	56469/11	1	
3	Washer M10	56469/12*	1	
4	Nut, domed M10	56469/13*	1	
5	Lock	56469/10*	1	For hose draining
6	Spindle	56469/02	1	
7	Support ring	56469/03	1	
8	Seal	56469/04*	1	
9	Spring	56469/09*	1	
10	Safety lock	56469/06	1	
11	Stem assembly	56469/05	1	
12	Safety lock	56469/08	1	
13	Plate	56469/07*	1	
14	'O' ring, valve to volute	54051*	1	
15	Anchor, blank cap chain	GPR11759/1	1	
16	Shim pack	SATHM10722*	1	
17	Instantaneous connector 2 1/2in. (Aluminium)	56559	1	
-	Instantaneous connector 2 1/2in. (Bronze)	56559/01	1	

* These are available in a delivery valve seal kit

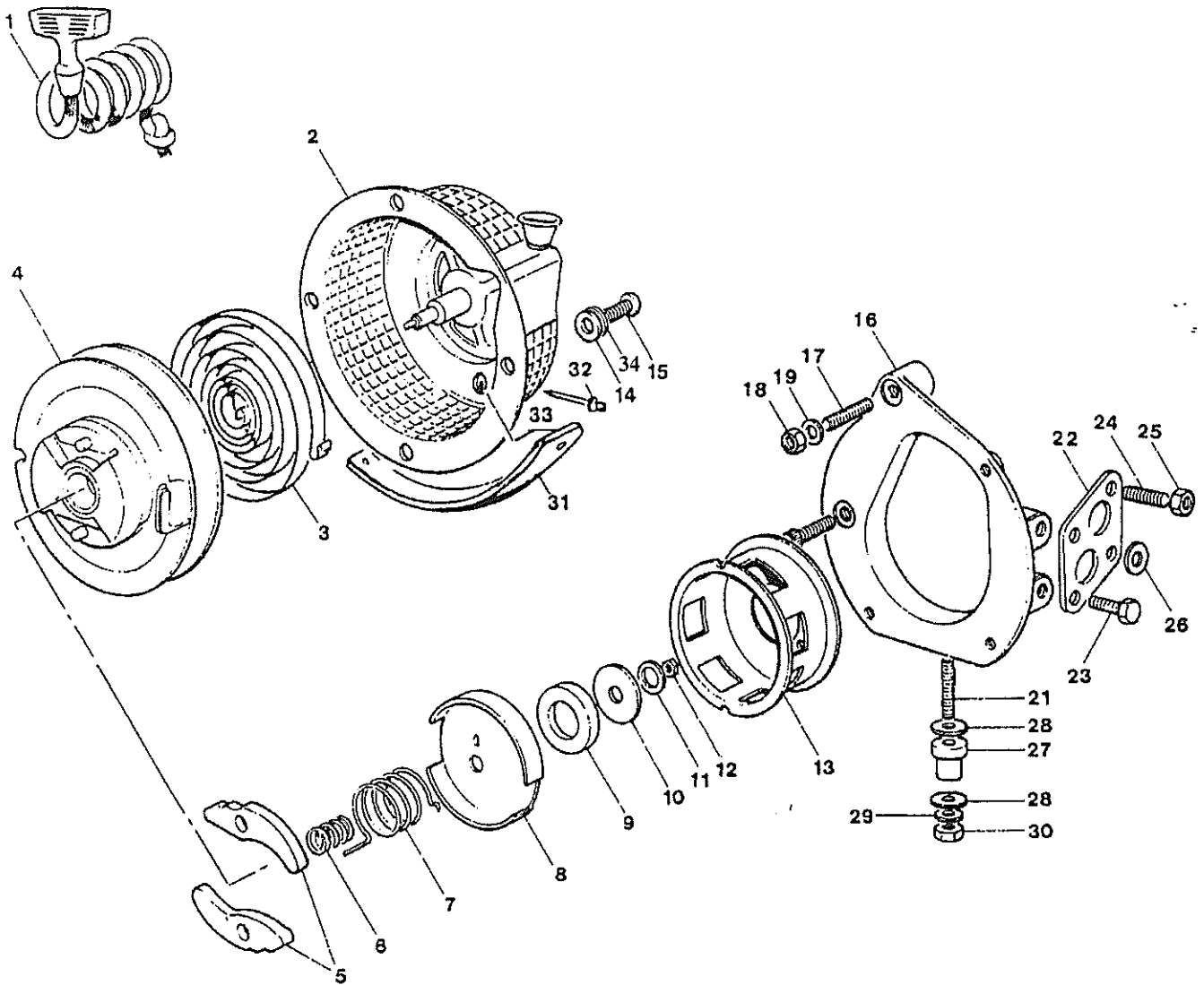
56940/01 Seal kit - Continental delivery valve (AI)

56940/02 Seal kit - Continental delivery valve (GM)

56940/03 Seal kit - Instantaneous connector

For all other fixings please refer to Delivery valves (earlier model) section.

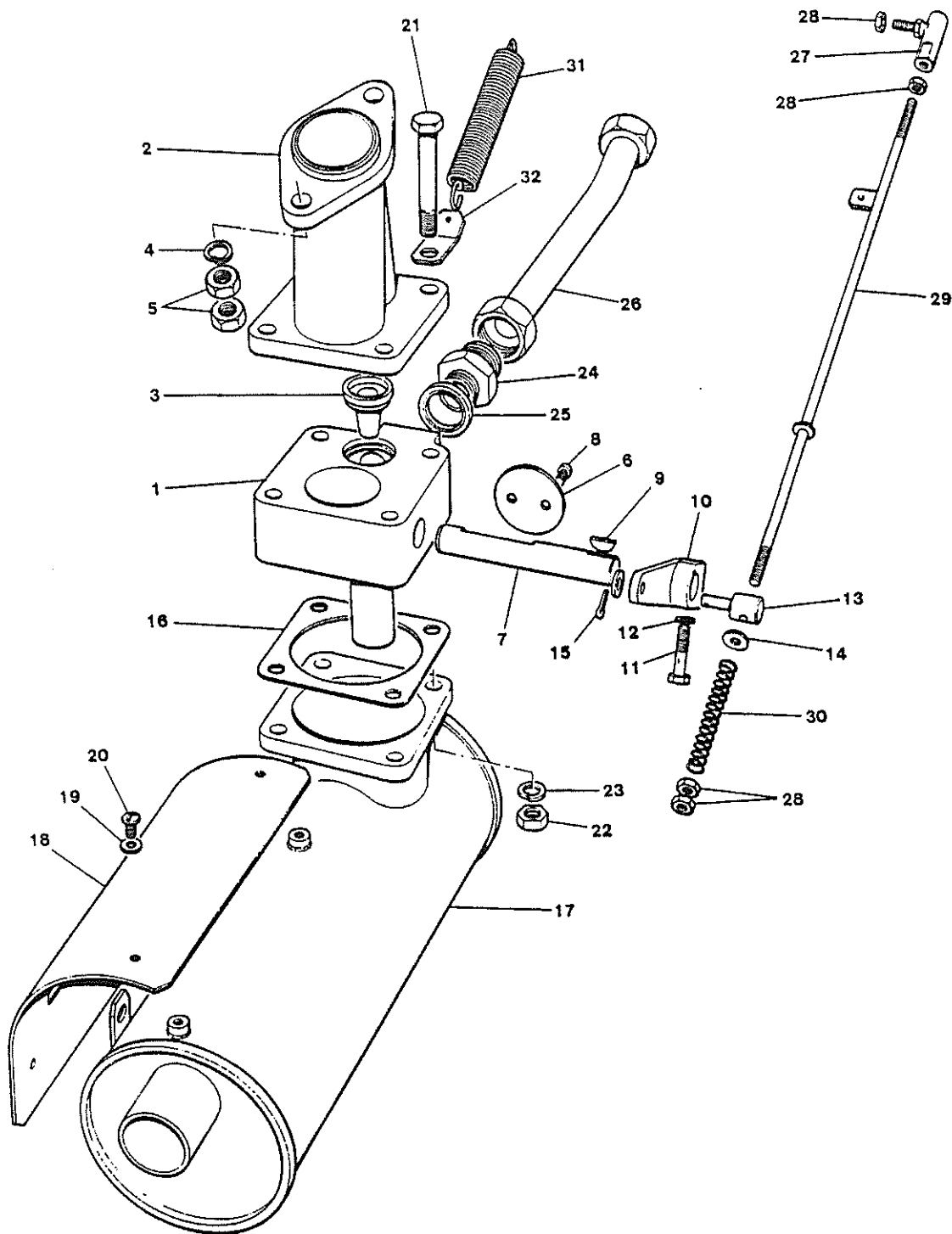
RECOIL HAND-START ASSEMBLY



RECOIL HAND-START ASSEMBLY

Item No.	Part No.	Description	Qty	Remarks
-	GPR11706	Recoil hand-start assembly	1	Comprises Items 1-12
1	50049	Rope assembly	1	
2	50050	Rewind housing	1	
3	50051	Return spring	1	
4	50052	Rewind pulley	1	
5	50053	Pawl	2	
6	50054	Spring inner	1	
7	50055	Spring	1	
8	50056	Spring cup	1	
9	50057	Washer, nylon	1	
10	50058	Washer	1	
11	50059	Spring washer	1	
12	50060	Nut	1	
13	GPR11708	Drive coupling	1	
14	MS170/40	M6 pan head screw	4	Hand-start assembly-to-front engine mtg
15	MS125/7	Washer, plain	4	
16	GPR11659	Front engine mounting	1	
17	MS48/45	Stud	1	
18	MS41/5	Nut	1	
19	MS25/9	Washer, plain	1	
20	MS65/60	Screw, socket head	1	
21	50285	Stud, engine mounting	1	
22	GPR11705	Mounting plate	1	
23	MS06/25	Screw	2	Mounting plate-to-Engine
24	MS49/25	Stud	2	Engine mounting-to-cradle
25	MS41/6	Nut	2	
26	MS25/10	Washer	1	
27	GTBD10938	Mounting rubber	1	
28	10714	Washer	2	
29	MS25/10	Washer	1	
30	MS41/6	Nut	1	
31	52121	Shield	1	
32	DSM8135/1	Pop rivet	2	
33	S21/1C	Washer 4BA	2	
34	MS29/5	Spring washer	4	

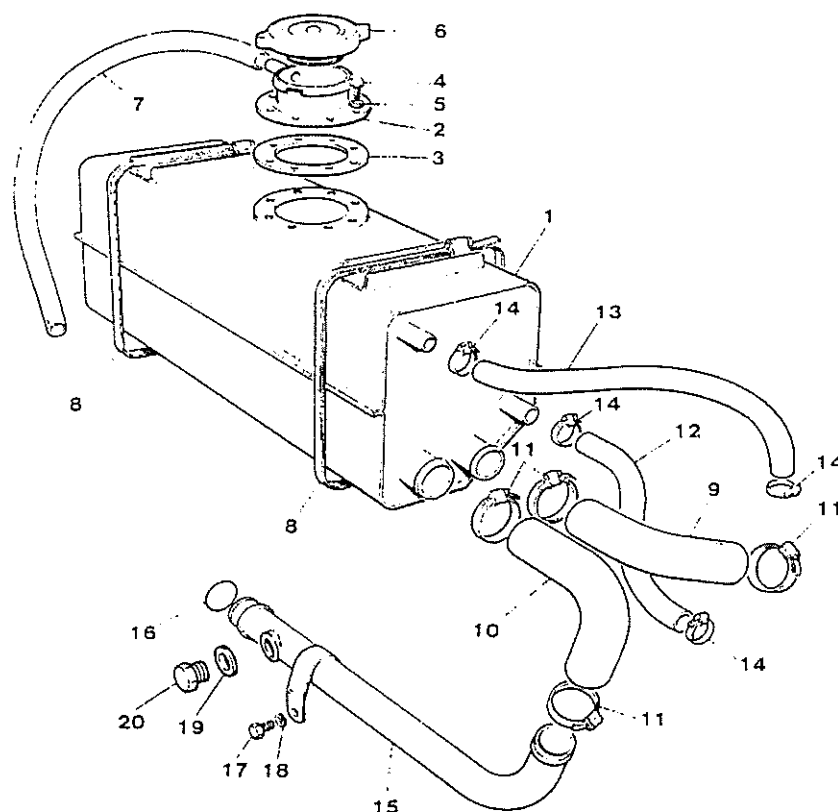
EXHAUST PRIMING AND CONTROLS



EXHAUST PRIMING AND CONTROLS

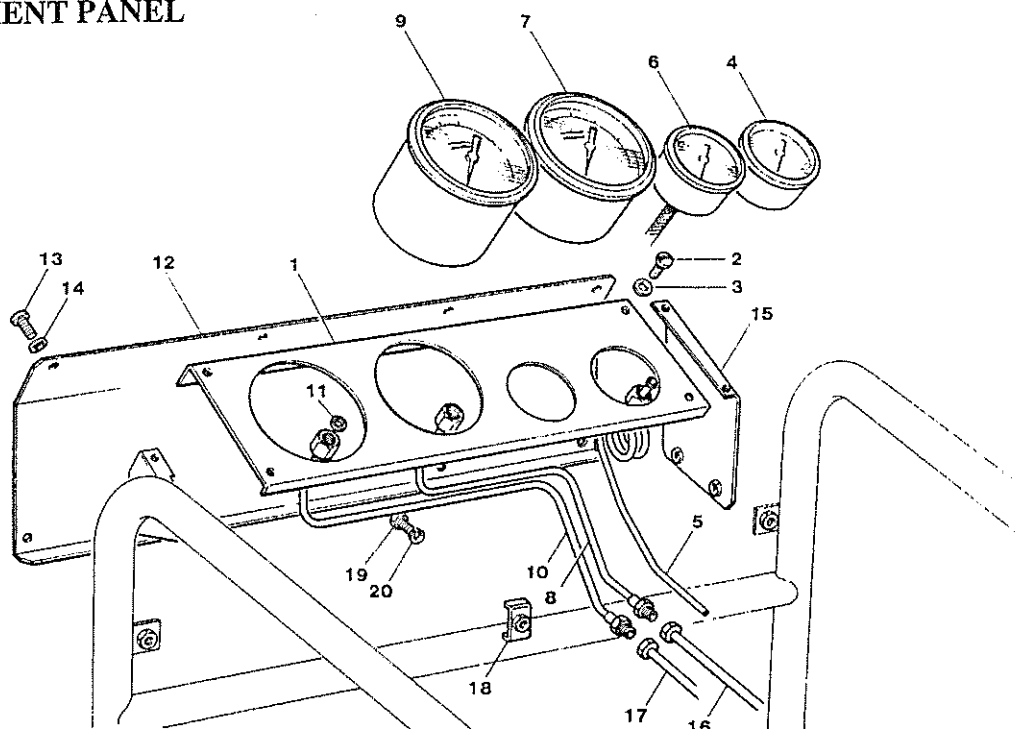
Item No.	Part No.	Description	Qty	Remarks
1	GPR11648/2	Exhaust primer housing	1	
2	50064	Exhaust adaptor	1	
3	FWP1089/3	Ejector nozzle	1	Exhaust primer
4	MS31/5	Lockwasher	2	When fitted
5	MS135/8	Nut M8	4	
6	GPR11742	Butterfly valve	1	
7	GPR11743	Shaft - butterfly valve	1	
8	MS171/48	Screw M5, cheese hd	2	
9	S25/3	Woodruff key 0.5in. dia	1	
10	FWMB1160/3	Operating lever	1	Exhaust primer
11	S205/8C	Bolt 1/4in. UNF	1	Clamping Item 10
12	S60/7C	Washer 1/4in., shakeproof	1	
13	GPR11744	Swivel pin	1	
14	MS125/7	Washer M6	1	
15	S31/C5	Split pin	1	
16	GPR11760	Joint silencer	1	
17	50067	Exhaust silencer	1	
-	50067/03	Exhaust silencer c/w heat shield	1	
18	50631	Heat shield	1	For Item 17
-	MS126/7	Washer M6	4	
19	MS31/4	Washer M6, shakeproof	4	For heat shield
20	MS104/10	Screw M6, hex. hd	4	
21	MS17/75	Bolt M6, hex. hd	4	
22	MS135/8	Nut M8	4	
23	MS136/8	Locknut M8	4	
24	GPN11959	Stud coupling	1	
-	FWMP3593	Union 1/2in.BSP	1	When fitted
25	S41/10	Washer 1/2 in. BSP sealing	1	
26	57520	Priming pipe	1	
27	DFP10144	Ball joint	1	
28	MS36/7	Nut M6	4	
29	GPR11746	Priming rod	1	
30	GPR11745	Spring (compression)	1	
31	50342	Return spring (tension)	1	
32	GPR11759	Anchor (for spring)	1	
-	51027	Bracket, exhaust support	1	Part of silencer assy

HEAT EXCHANGER ASSEMBLY



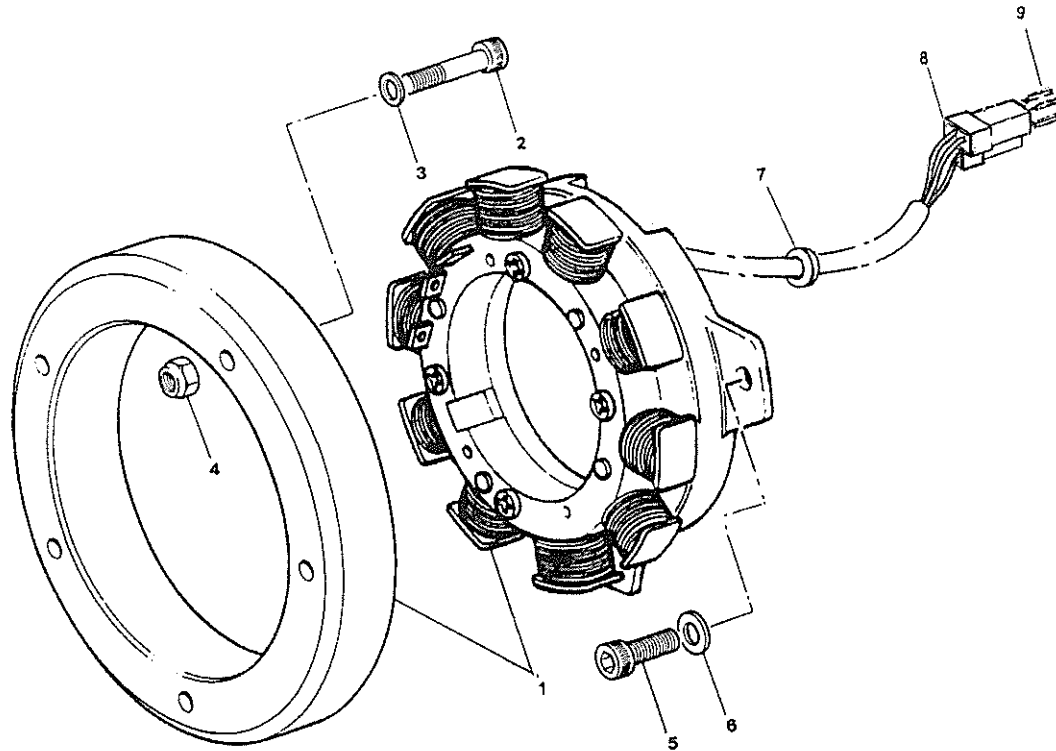
Item No.	Part No .	Description	Qty	Remarks
1	GPR11671/3	Heat exchanger (Alum)	1	
-	GPR11671/4	Heat exchanger (Bronze)	1	
2	GPR12313	Filler neck	1	
3	GPR12314	Joint, filler neck	1	
4	MS170/29	Screw M5, pan head	8	
5	MS33/5	Seal M5, bonded - Alum. only	8	
6	GPR12311	Filler cap	1	
7	DFP4641/2	Overflow pipe	1	
8	50706	Strap	2	Heat exchanger-to-unit
9	GPR12332/1	Elbow, heat exchanger-to-thermostat	1	Heat exchanger-to-thermostat
10	GPR12332	Elbow, heat exchanger-to-pipe	1	Heat exchanger-to-pipe
11	MS81/5	Hose clip	4	
12	50080	Hose, heat exchanger-to-volute	1	Heat exchanger-to-volute
13	PFP7988/10	Hose, suction-to-heat exchanger	1	Suction-to-heat exchanger
14	50100 MS81/4	Hose clip	4	Suction-to-heat exchanger
15	50078	Pipe, heat exchanger-to-cylinder block	1	
16	10691	'O' ring	1	
17	MS06/16	Screw	1	Heat exchanger-to-cylinder block
18	MS29/7	Spring washer	1	
19	UFP2303/3	Bonded seal	1	
20	S64/1	Drain plug	1	

INSTRUMENT PANEL



Item No.	Part No .	Description	Qty	Remarks
1	GPR12316/5	Instrument panel	1	GPR12316-on (early models)
-	GPR12316/6	Instrument panel	1	When fitted
2	MS170/40	Screw M6, pan head	4	Inst. panel to panel-mounting/cradle
3	MS125/7	Washer M6	4	
4	50228/06	Oil pressure gauge	1	0-10bar
5	50249	Pipe assembly - oil gauge	1	
6	50229	Water temperature gauge	1	
-	50229/04	Water temperature gauge	1	When fitted
7	50227/10	Pump pressure gauge (B&M)	1	
8	50466	Pressure gauge pipe (part)	1	See Item 16
9	50226/05	Compound gauge (B&M)	1	
10	50467	Vacuum gauge pipe (part)	1	See Item 17
11	50470	Washer	3	
12	GPR12318	Blanking plate, rear	1	
13	MS170/40	Screw M6 pan head	6	In blanking plate, rear
14	MS125/7	Washer M6	6	
15	GPR12303	Inst. panel mounting	1	
16	GPR8142/35	Pressure gauge pipe	1	Pump end (part)
17	GPR8142/36	Vacuum gauge pipe	1	Pump end (part)
18	50615	Clamp	1	To hold gauge pipe
19	MS104/20	Bolt M6, hex. head	1	For clamp
20	MS29/5	Spring washer M6	1	For clamp
-	50933	Battery & 'Hours-recorded' meter	1	Optional extra
-	GPF9375	Hours-run meter	1	Optional extra
-	53343	Washer, oil pressure gauge	1	If fitted
-	UMP9413	'O' ring	1	If fitted

ALTERNATOR



Item No.	Part No.	Description	Qty	Remarks
1	GPR11718	Alternator, (stator and rotor)	1	
2	MS63/35	Screw M6, socket head	5	Rotor-to-coupling
3	50286	Washer, for above	5	
4	MS41/4	Nut M6 self -locking	5	
5	MS63/16	Screw M6, socket head	3	Stator-to-volute
6	MS25/7	Washer M6, for above	3	
7	GPR12327	Grommet (in volute body)	1	
8	54893/10	Plug (male)	1	
9	54893/01	Terminal (male)	3	

RECOMMENDED SPARES

Part No.	Description	Qty	Remarks
GPR11773/9	Ballast resistor	1	Up to S/No. 0193
GPR12324/2	Air cleaner element	1	
GPR12335	Hose	1	
10691	'O' ring	1	
SP002	Gland repair kit	1	
MS41/8	Nut	1	
50300	Joint	1	
FWMP3568	'O' ring	1	
GPF8526/1	'O' ring	1	
DFP10144	Ball joint	1	
50080	Hose	1	
10691	'O' ring	2	
10696	Washer	2	
10698	Valve seal	2	
10701	'O' ring	2	
GPF9453	Fuse	1	
50053	Pawl set	1	
50049	Rope assembly	1	
50443	Hose	1	
GPR11984	Contact set	1	
GPR11985	Condenser	1	Early models only
GTBD10938	Mounting rubber	3	
FP318	Suction washer	1	

INSTRUCTION PLATES AND LABELS

Item No.	Part No.	Description	Qty	Remarks
-	50570/01	Nameplate, small	1	Distributor cover
-	53694	Nameplate, large	1	Instrument panel
-	50463	Instruction plate, general	1	
-	50464	Instruction plate, switch	1	Front cross-member
-	GPR4861/5	Plate - throttle instruction	1	
-	50632	Socket label	1	When fitted
-	50569	'GODIVA' decal	1	Fuel tank
-	FWP 1387/6	Label 'GASOLINE'	1	Fuel tank
-	FWP 1388/5	Label 'COOLANT'	1	Heat exchanger
-	55652	Label (Electrical Safety)	1	On battery carrier re: charger socket/connection
-	DSM8135/1	Pop rivet	4	

FLOODLIGHT, WHEEL ASSEMBLY, TROLLEY & TOOL KIT

FLOODLIGHT

Item No.	Part No.	Description	Qty	Remarks
-	50487	Floodlight & mast assembly	1	
-	50692	Bulb, floodlight	1	
-	50490	Lamp (rectangular type)	1	
-	51024	Lamp (round type)	1	
-	649	Floodlight, twin 20W stem	1	
-	675	Floodlight, twin 55W stem	1	
-	54717	Lens (rectangular)	1	
-	54854	Lens (round)	1	
-	648	Socket replacement kit	1	To fit modified socket from S/No. 0476

WHEEL ASSEMBLY

Item No.	Part No.	Description	Qty	Remarks
-	GPF347/2	Wheel assembly includes:	1	
-	GPF487/3	Axle	1	
-	FWP3014/1	Wheel	2	
-	S21/12P	Washer	4	
-	S31/W4	Split pin	4	

TROLLEY

Item No.	Part No.	Description	Qty	Remarks
-	AFP137	4-wheel steerable trolley	1	

TOOL KIT

Item No.	Part No.	Description	Qty	Remarks
-	GPR536/5	Tool kit	1	
-	GPR9385/1	Canvas cover	1	