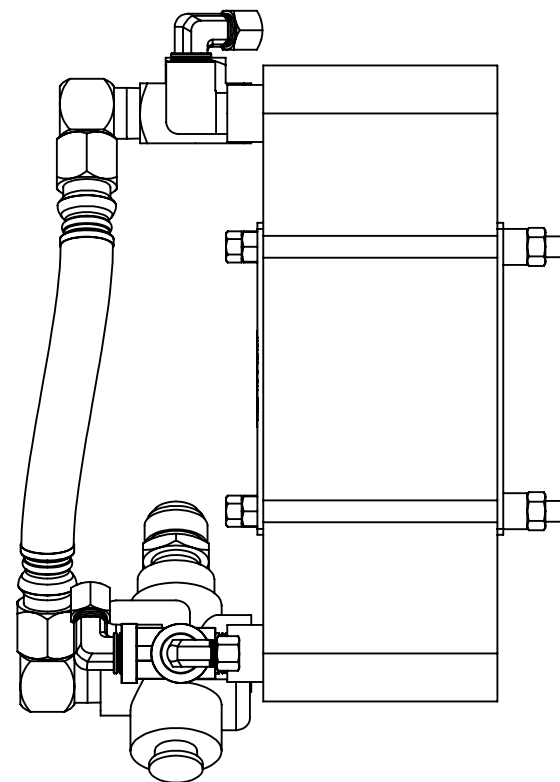
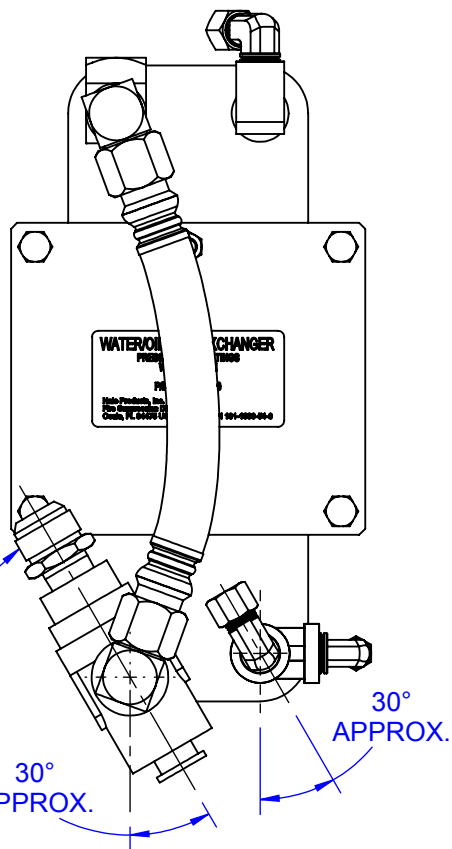
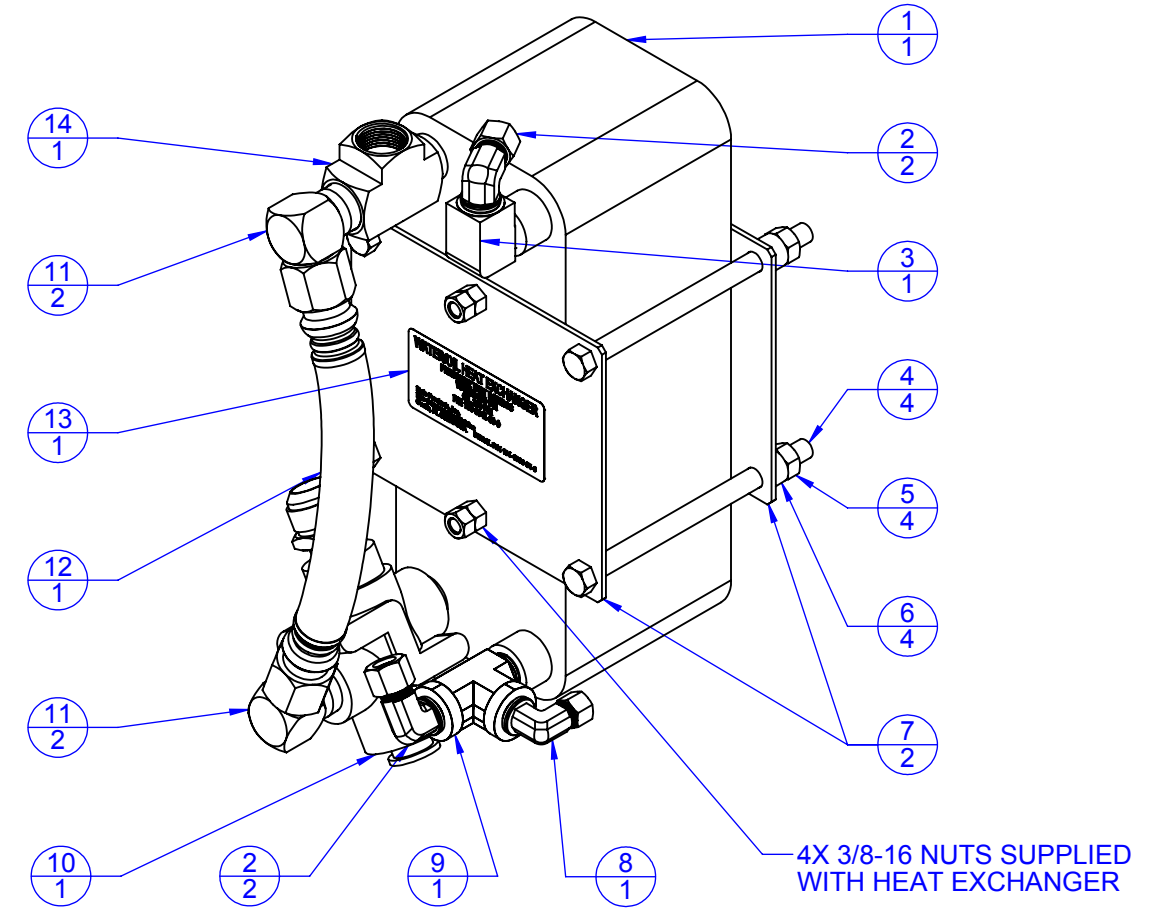
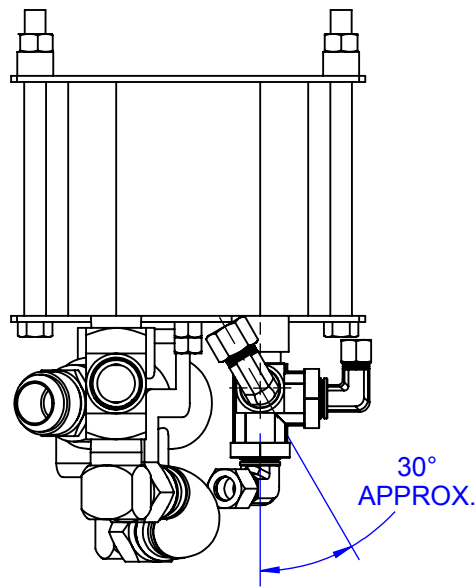


NOTE: USE LOCTITE PST OR EQUIVALENT ON ALL PIPE CONNECTIONS. DO NOT USE TEFLON TAPE.

ASSEMBLY P/N: 108-0641-00-0 HALE SmartCAFS & CAFSPro HEAT EXCHANGER PARTS IDENTIFICATION

PROJECTION:



ITEM	PART	DESCRIPTION	QTY
1	108-0641-01-0	PLATE HEAT EXCHANGER	1
2	082-0448-02-0	ELBOW, 1/2" MALE NPT x 1/2" COMP	2
3	082-0414-02-0	ELBOW, 1/2 MNPT X 1/2 FNPT	1
4	018-1870-02-0	SCREW, 7/16-14 X 7, HH ZINC	4
5	110-1800-02-0	NUT, 7/16-14, STEEL, ZP	4
6	159-1920-00-0	SPACER, 3/4"OD X 1/2"ID X 1/2" LG	4
7	019-3650-00-0	CLAMPING PLATE, HEAT EXCHANGER	2
8	082-0457-02-0	ELBOW 1/2 NPT X 3/8 COMPRESSION	1
9	082-0424-02-0	TEE, 1/2 NPT X 1/2 FNPT X 1/2 FNPT	1
10	038-1390-00-0	OIL BYPASS THERMOSTATIC VALVE	1
11	082-0530-08-0	ELBOW, 3/4 MNPT X -12 JIC	2
12	340-1440-00-0	HOSE, OIL BYPASS ASSEMBLY	1
13	101-1630-54-0	DECAL, HEAT EXCHANGER	1
14	082-0523-02-0	TEE, 3/4 FNPT	1
15	082-0542-08-0	FITTING, 3/4 NPT x - 16 JIC	1

UNLESS OTHERWISE SPECIFIED
DIMENSIONS ARE IN MILLIMETERS
[INCHES ARE FOR REFERENCE, ONLY]
TOLERANCE FOR MILLIMETER DIMENSIONS:
X: ±1
X.X: ±0.5
X.XX: ±0.25
X.XXX: ±0.125
ANGLES: ±0.25°
SURFACE TEXTURE IN µm Ra
REMOVE ALL SHARP EDGES, 0.25MAX

COPYRIGHT ©
NOT TO BE REPRODUCED OR USED TO
MAKE OTHER DRAWINGS OR MACHINERY

MATERIAL		TITLE	
MADE FROM		HEAT EXCHANGER SUB-ASSEMBLY	
FINISH	DRAWN	MAB	SIZE
PROJECT	APPROVED	JRP	B
	DATE	11JUL2003	SCALE
			1:4
DRAWING NUMBER		REV	
PL1000		J	
SHEET		1 OF 2	

REVISIONS

ECN	REV.	ZONE	CHANGED FROM	BY	DATE	APVD
CFL3203	H	A6	REDRAWN IN SOLIDWORKS; MOVED 082-0562-08-0 FROM 108-0641-00-0 TO UPPER ASSEMBLIES; ADDED 108-0641-15-0 ASSEMBLY	JRH	13FEB2014	JRP
4597	J		REMOVED 159-2010-00-0 AND 142-0390-00-0 FROM 108-0641-25-0 ASSEMBLY	RAA	23OCT2018	JS2

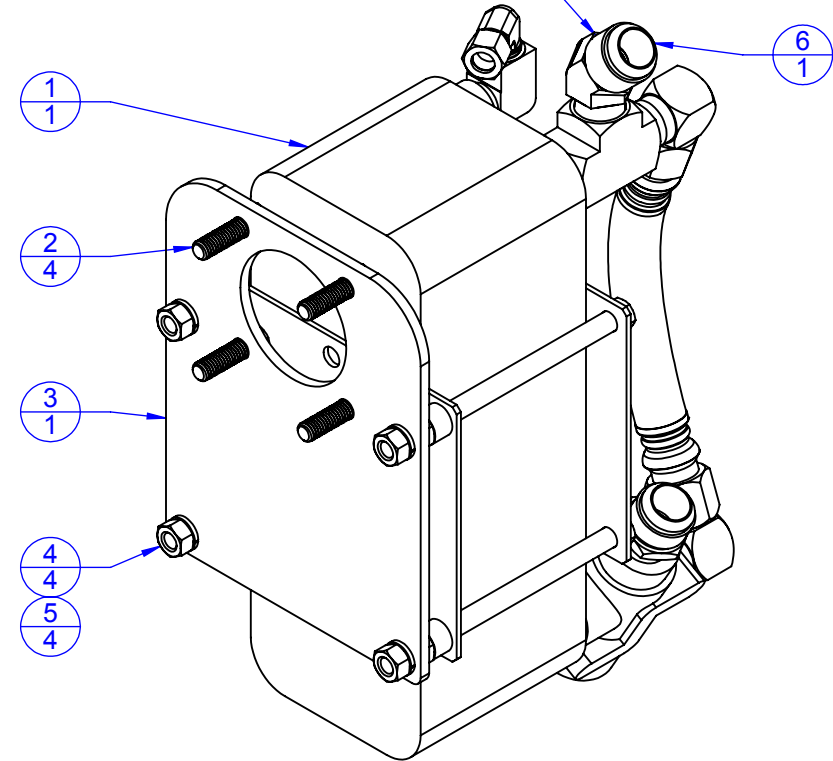
108-0641-10-0 BOM TABLE			
ITEM	PART	DESCRIPTION	QTY.
1	108-0641-00-0	HEAT EXCHANGER SUB-ASSEMBLY	1
2	018-1814-02-0	SCREW, 7/16-14X1-1/2 ZINC PL	4
3	019-3641-00-0	HANGER PLATE, HEAT EXCHANGER	1
4	110-1800-02-0	NUT, 7/16-14, STEEL, ZP	4
5	097-0190-00-0	WASHER, SPLIT LOCK, 7/16	4
6	082-0562-08-0	ELBOW, 3/4 MNPT X -16 JIC, 45°	1

108-0641-15-0 BOM TABLE			
ITEM	PART	DESCRIPTION	QTY
1	108-0641-00-0	HEAT EXCHANGER SUB-ASSEMBLY	1
2	018-1814-02-0	SCREW, 7/16-14X1-1/2 ZINC PL	4
3	019-3641-00-0	HANGER PLATE, HEAT EXCHANGER	1
4	110-1800-02-0	NUT, 7/16-14, STEEL, ZP	4
5	097-0190-00-0	WASHER, SPLIT LOCK, 7/16	4
6	082-0543-08-0	ELBOW, 3/4" MNPT X 16 JIC	1

108-0641-25-0 BOM TABLE			
ITEM	PART	DESCRIPTION	QTY
1	108-0641-00-0	HEAT EXCHANGER SUB-ASSEMBLY	1
2	018-1814-02-0	SCREW, 7/16-14X1-1/2 ZINC PL	4
3	019-3640-00-0	MOUNTING BRACKET, HEAT EXCHANGER	1
4	110-1800-02-0	NUT, 7/16-14, STEEL, ZP	4
5	097-0190-00-0	WASHER, SPLIT LOCK, 7/16	4
6	082-0562-08-0	ELBOW, 3/4 MNPT X -16 JIC, 45°	1

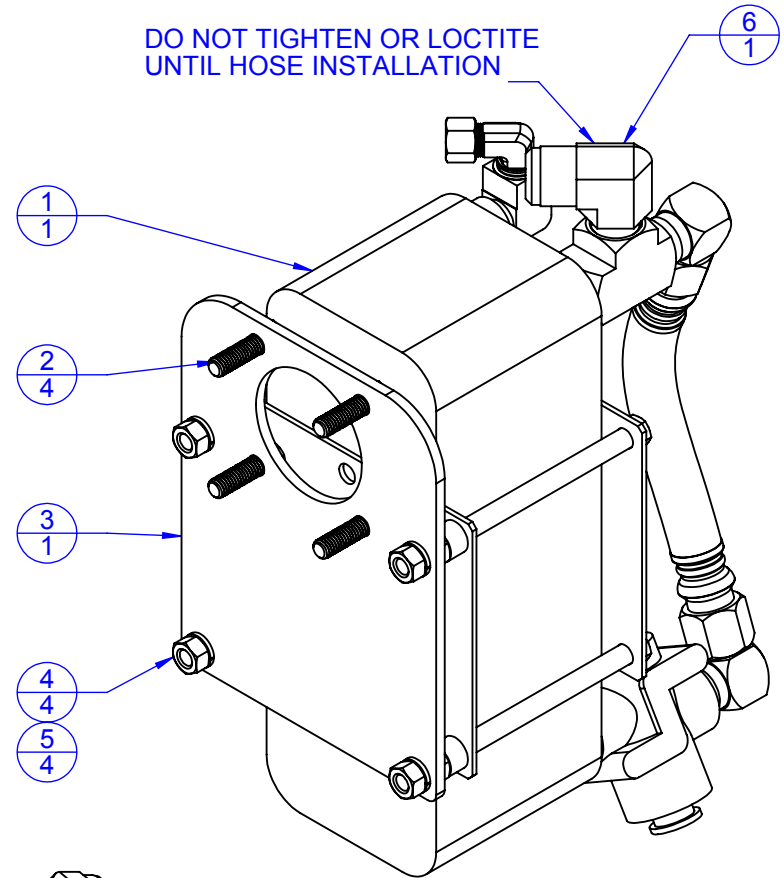
INSTALLATION HARDWARE
QMAX/QTWO MOUNTING
108-0641-10-0

DO NOT TIGHTEN OR LOCTITE
UNTIL HOSE INSTALLATION



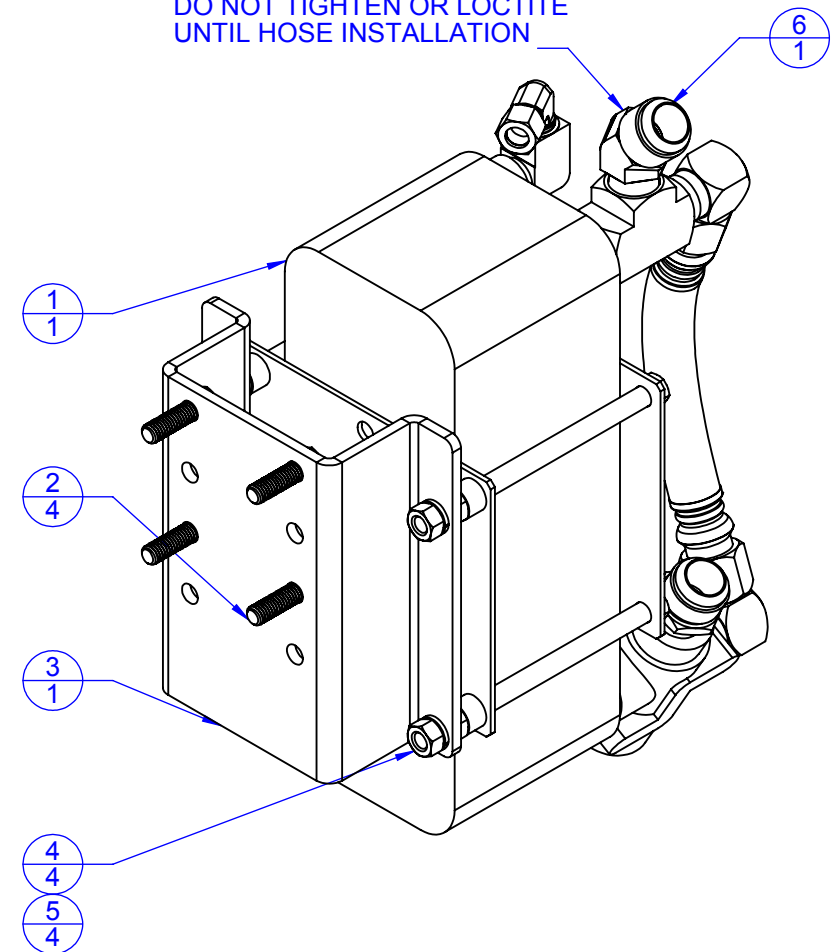
INSTALLATION HARDWARE
DSD MOUNTING
108-0641-15-0

DO NOT TIGHTEN OR LOCTITE
UNTIL HOSE INSTALLATION



INSTALLATION HARDWARE
FOR USE WITH BOTTOM MOUNT MIV
(QMAX/QTWO ONLY)
108-0641-25-0

DO NOT TIGHTEN OR LOCTITE
UNTIL HOSE INSTALLATION



REVISIONS						
ECN	REV.	ZONE	CHANGED FROM	BY	DATE	APVD
CFL3203	H	C3, B8; E4	REDRAWN IN SOLIDWORKS; MOVED 082-0562-08-0 FROM 108-0641-00-0 TO UPPER ASSEMBLIES; ADDED 108-0641-15-0 ASSEMBLY	JRH	17FEB2014	JRP
4597	J		REMOVED 159-2010-00-0 AND 142-0390-00-0 FROM 108-0641-25-0 ASSEMBLY	RAA	23OCT2018	JS2

UNLESS OTHERWISE SPECIFIED
DIMENSIONS ARE IN MILLIMETERS
[INCHES ARE FOR REFERENCE, ONLY]
TOLERANCE FOR MILLIMETER DIMENSIONS:
X: ±1
X.X: ±0.5
X.XX: ±0.25
X.XXX: ±0.125
ANGLES: ±0.25°
SURFACE TEXTURE IN µm Ra
REMOVE ALL SHARP EDGES, 0.25MAX

COPYRIGHT ©
NOT TO BE REPRODUCED OR USED TO
MAKE OTHER DRAWINGS OR MACHINERY

FSG OF IDEX IDEX CORPORATION		HALE GODIVA <i>Class 1</i>	
MATERIAL		TITLE HEAT EXCHANGER ASSEMBLIES	
MADE FROM		DRAWN	MAB
FINISH		APPROVED	JRP
PROJECT		DATE	11JUL2003
		SIZE B	DRAWING NUMBER PL1000
		SCALE 1:4	REV J
			SHEET 2 OF 2

PROJECTION:

