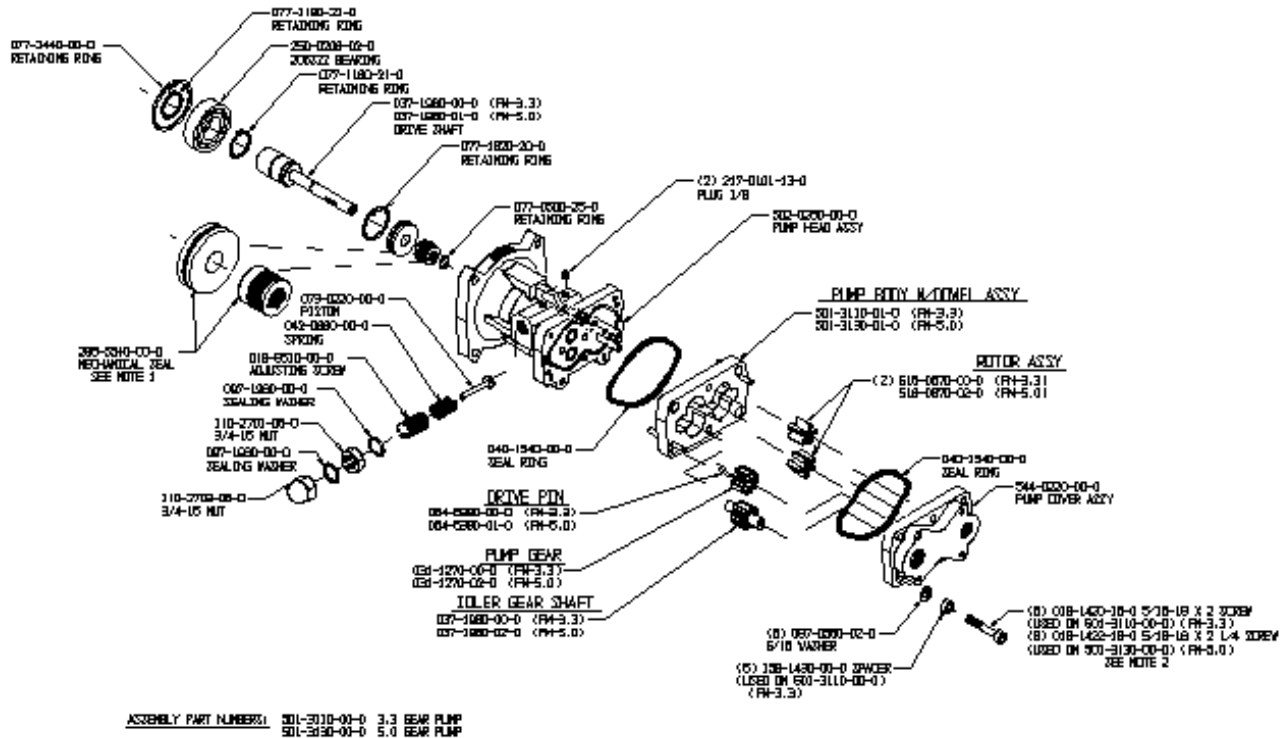


Field Service Kit for FLX Gear- Pumps



Model	Description	Part No.	Quantity	Remarks
All gear- pumps	O- Ring for Pump Body	040-1540-00-0	2	Grease before installation to keep in place
All gear- pumps	Mechanical Shaft- Seal	296-5540-00-0	1 set	Clean running surfaces with alcohol tissue before installation, do not grease!
All	Feedback Sensor replacement kit	546-3240-00-0	1 set includes seal- washer and O- Rings	Caution! Installation Instructions must be exactly followed! Sensor must never block measuring gears from spinning.
All	Feedback Sensor only	200-2481-00-0	1	If seal- washer and O-Rings are re- usable
All gear- pumps	Pump- Shaft carbon- bearings	250-9530-00-0	2	Machine suitable pin to press in
All gear- pumps	Seal- Ring for relief- valve	097-1980-00-0	2	
All	Motor Driver (Distribution Box)	610-00044	1	Must be specifically configured to match actual model. Field- procedure available but to be exactly followed.
All	Display head	610-00039-001 Horizontal Orientation OR 610-00039-000	1	Hardware physically identical for all FLX. Software revision may need to be considered. Required Software version can be loaded at the factory. Use setup- procedure and recorded



Recommended Spares Foamlogix Rev A

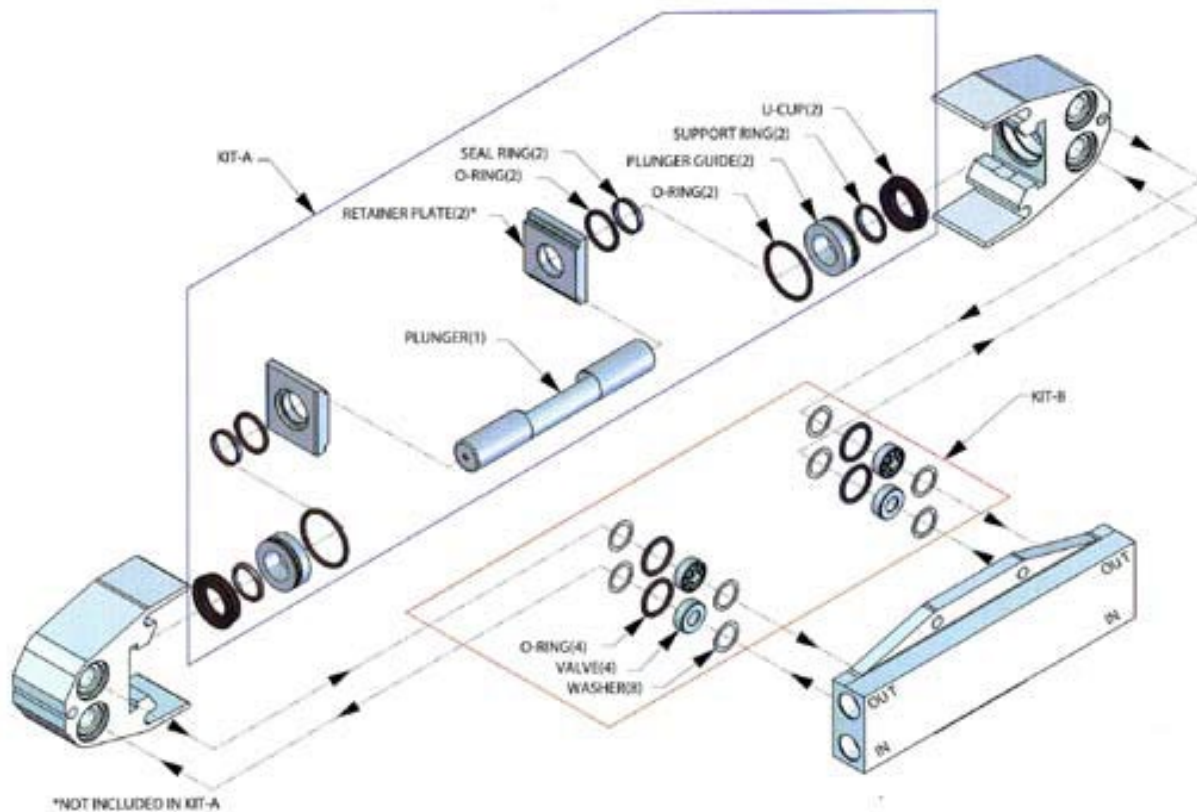
		Vertical Orientation		factors to avoid re- calibration
All	Injection Nozzle	038-1790-00-0	1	Service Item, do not glue in with Loctite
All	Paddlewheel Water Flow Sensor	102714	1	
FLX 3.3	Rotor Assy. (measuring gears)	516-0670-00-0	1 set (contains 2)	Check during installation, must spin absolutely free and easy
FLX 3.3	Key for pump- gears	064-6380-00-1	1	
FLX 3.3	Upper pump- gear	031-1270-00-0	1	
FLX 3.3	Lower pump- gear	037-1980-00-0	1	
FLX 5.0 and 6.5	Rotor Assy. (measuring gears)	516-0670-02-0	1 set (contains 2)	Check during installation, must spin absolutely free and easy
FLX 5.0 and 6.5	Key for pump- gears	064-6380-01-1	1	
FLX 5.0 and 6.5	Upper pump- gear	031-1270-02-0	1	
FLX 5.0 and 6.5	Lower pump- gear	037-1980-02-0	1	

The above parts shall allow the fix of most reported system- issues on- site. Refer to parts manual for any additional parts.

Parts listed under "All" may be used on any FLX System.



Field Service Kit for FLX 1.7 and 2.1 Piston- Pumps





Recommended Spares Foamlogix Rev A

Model	Description	Part No.	Quantity	Remarks
All	Seal- Washer for Feedback Sensor	097-1971-00-0	1	Fits any FLX
All	Feedback Sensor only	200-2481-00-0	1	Fits any FLX, except HP
All	Diode 42 V 240 A	110589	1	Fits any FLX
All	Motor Driver (Distribution Box)	610-00044	1	Must be specifically configured to match actual model. Field-procedure available but to be exactly followed.
All	Display head	610-00039-001 Horizontal Orientation OR 610-00039-000 Vertical Orientation	1	Hardware physically identical for all FLX. Software revision may need to be considered. Required Software version can be loaded at the factory. Use setup- procedure and recorded factors to avoid re- calibration
All	Injection Nozzle	038-1790-00-0	1	Service Item, do not glue in with permanent Loctite, fits any FLX
All	Paddlewheel Water Flow Sensor	102714	1	Fits any FLX
All	Side Mount Tank Level Sensor	200-210-02-0	1	Fits any FLX
All	Tank Select Plug	513-0320-23-0	1	Can be used to simulate Tank A selected and to check tank-selector- valves
FLX 1.7 and 2.1	O- Ring for Rotor Housing	040-0340-00-0	2	
FLX 1.7 and 2.1	Flow- Meter Assy.	115497	1	Complete unit for total-exchange after fatal failure
FLX 1.7 and 2.1	Rotor Assy. (measuring gears)	016-1010-00-0	2	Check during installation, must spin absolutely free and easy
FLX 1.7 and 2.1	Pump Repair Kit A	117495	1	Plunger and seals
FLX 1.7 and 2.1	Pump Repair Kit B	117496	1	Valves and seals
FLX 1.7 and 2.1	Pump Repair Kit C	117497	1	Cam Bearing

The above parts shall allow the fix of most reported system- issues on- site. Refer to parts manual for any additional parts.

Parts listed under “All” may be used on any FLX System

Fittings not listed here or in the parts- manual are common plumbing- parts, available from local hydraulic- parts suppliers.