



# 4" Wafer Check Valve Change

## SB-146

October 19, 2017

To: All Valued Hale/Class 1 Foam Customers

Subject: 4" Wafer Check Valve Change

The current 4" check valve (part number 038-1570-08-0) has been upgraded to a new check valve (part number 538-00032). The transition occurred August 2017. The new check valve is more rugged with silicon seals versus buna, completely solid stainless steel body construction, and has a longer life. See price list for pricing on this new valve.

### Installation

Fits 2433, but for the uncommon "M" pattern modification will be needed.

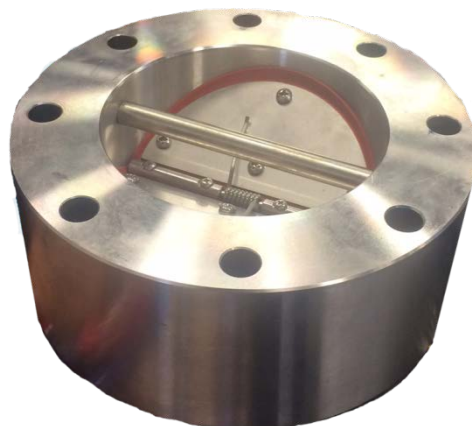


Figure 1 538-00032 4" Wafer Check Valve

Please Contact Hale Customer Service at 1-800-533-3569 or [haletechnicalservice@idexcorp.com](mailto:haletechnicalservice@idexcorp.com) if you have any questions or need assistance.