

Owner's Manual

SUPERCHEIF

10.5HP Gas Pump



CUSTOMER CHECK LIST:

Please do the following immediately upon receipt of your pump:

- Inspect pump for shipping damage. (Report any damage to freight company).
 - Check to see that any/all accessories that you ordered are included.
 - Record the pump serial number. This can be found stamped on the top housing, and on the yellow sticker located on the side of the engine.
 - Fill out and return warranty card.
- NOTE:** Warranty is validated upon the receipt of the completed Warranty Registration Card.
- Read all operating and maintenance instructions.

HALE

607 NW 27th Avenue
Ocala FL 34475
Phone: 800-533-3569

TABLE OF

Introduction & Applications	2	Specifications	7
Pump Operation	3	Pump Curve.....	8
Maintenance	5	Accessories.....	8
Storage.....	5	Parts list and Diagrams	9-11
Warnings/Safeguards.....	6	Warranty: Briggs & Stratton:.....	12
Troubleshooting	6	Otterbine	13

Revised 2-2019

INTRODUCTION

CONGRATULATIONS! You have just purchased the best pump on the market. At Otterbine®/Barebo, Inc. we are committed to quality products and service. If you have any problems or questions regarding your new pump, please contact your qualified Otterbine distributor or call us at 800-237-8837.

Your new pump is a rugged, well-tested tool, but it requires some routine care and maintenance. Please read this manual before operation.

WARRANTY

The Otterbine® pump is covered by a one-year limited warranty. The engine is warranted by Briggs & Stratton. Both warranties are enclosed, see inside and outside back cover. **The enclosed warranty card must be filled out and returned for your warranty to be valid.**

NOTICE: Pump is shipped with no oil in the engine. Fill with oil before first use.
(See Page 3, Step 1 for more details)

CAUTION: The 1/8" diameter weep hole in the endcap must be kept clear for proper priming and operation. During normal operation, there will be a stream of water coming out of this weep hole.

Hale Model #545-4091-07-0 (National Hose Thread Discharge)
Hale Model #545-4091-08-0 (ISO Thread Discharge)

Pump Operation

1. To use the Super Chief the two main components must be assembled – the engine/pump assembly and the float assembly, see section 7.

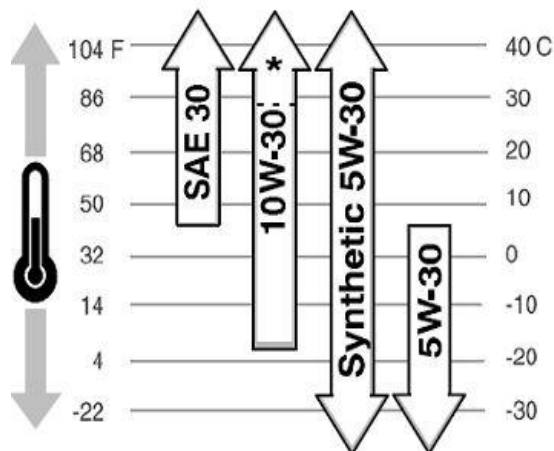
2. **Important:** Fill engine crankcase with oil.

(The pump engine contains NO oil when received).

Fill with 46-48 oz. (1.36 - 1.4 L) of engine oil as specified.

Use dipstick to verify oil level.

- Use SAE 30 in temperatures of 40°F (5°C) and higher
- Use SAE 10W-30 for a varying temperature range of 0 to 100° F (-18 to 38° C), which improves cold weather starting, but may increase oil consumption at 80° F (27° C) or higher.
- A synthetic oil SAE 5W-30 is the best for very cold temperatures of -20 to as high as 120° F (-30 to 40° C) providing the best protection at all temperatures as well as improved starting with less oil consumption
- Use SAE 5W-30 for very cold temperatures of 40° F and below (5° C and below)



3. **Fill gas tank.** Use a minimum of 87 octane/87 AKI (91 RON) gasoline, up to 10% ethanol is acceptable. To allow for fuel expansion do not fill above the bottom of the neck.

4. **To Start Engine.**

- A. Open fuel line valve located above the throttle control. Turn fuel line valve to "ON" position, handle is parallel with fuelline.
- B. The throttle control is located on the side of the engine. For a cold start slide throttle control handle fully to the "START or CHOKE" position.
- C. Grasp rope handle and pull slowly until resistance is felt. Then pull cord rapidly to overcome compression, prevent kickback and start engine. Repeat if necessary.
- D. As the engine warms up, gradually adjust the throttle to the "FAST" position.

5. **Place pump in water and start for fastest prime.**

- A. Pump may fail to prime properly if started in fast idle position on shore first.

6. **To Stop Engine.**

- A. Move throttle control to "SLOW" position (throttle lever to full left position)

Operating Notes:

- **Do not submerge the muffler in water.** May cause damage to the engine.
- **Use a 3" dia. discharge hose.** Chief pumps are low pressure/high volume. Anything less than 3" dia. will restrict flow and reduce GPM output.

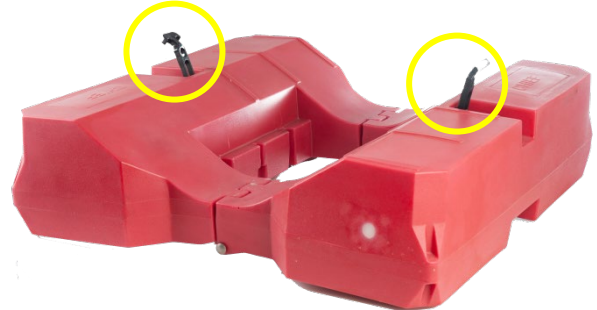
7. Assembly of Super Chief

The Super Chief will be supplied in two separate parts – 1. Float 2. Engine.

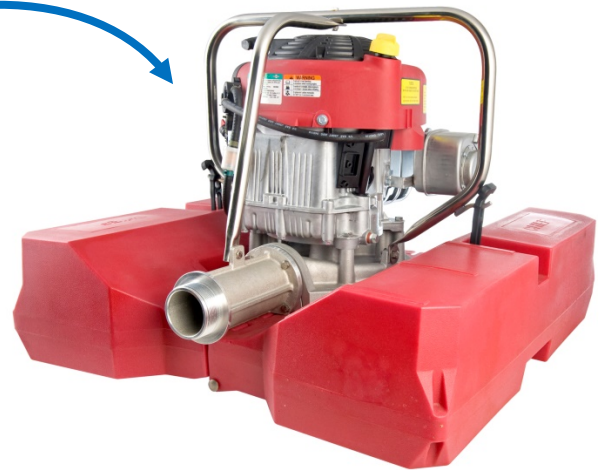
7.1 The float will need to be unfolded to allow the engine to be fitted.



Turn the float over, so the securing straps are facing up



7.2 Lift the engine by the handle, and place into the centre of the float,



7.3 Secure the engine to the float by pulling the flexible straps and hooking into the keeper on the frame. There are two flexible straps, one on either side of the frame.



The strap hooks over the keeper.
Repeat for other side.

To dismantle and store the Super Chief pump, reverse this process.

ENGINE MAINTENANCE

CAUTION: Always remove spark plug first. (This prevents accidental starting during servicing.)

MAINTENANCE SCHEDULE

TIME	ACTION
After first 5 hours	•Change Oil
After every 5 hours	•Check Oil Level •Remove dirt & debris from air cleaner with a cloth or brush. Cleaning with a forceful spray is not recommended as water can contaminate the fuel system
Every 25 hours/3 months	•Clean air cleaner filter
Every 50 hours/ Each season:	• Change oil
Every 100 hours/yearly	• Remove blower housing & clear debris from cooling system. • Spark plug - clean & reset gap at .03" • Replace IN-LINE fuel filter.

Change Oil: Drain oil from bottom of the engine. Change oil while engine is warm, after first 5 hours & every 50 hours/season thereafter. Change every 25 hours if operated under heavy load, or in high ambient temperatures.

Clean air cleaner filter:

(Every 25 hours/3 months)

1. Lift handle on air cleaner cover and remove.
2. Clean or replace air cleaner filter as necessary.
3. Reinstall air cleaner filter. Reinstall air cleaner cover and secure into place with the handle.

SALT WATER MAINTENANCE

Otterbine floating pumps may be used in salt water applications providing the pump is immediately flushed with fresh water after use for **7-10 minutes at full throttle**. The exterior hardware must be rinsed and wiped dry.

STORAGE INSTRUCTIONS

If the Otterbine pump is to be stored for 30+days, do the following:

1. To prevent dirt or gum deposits in the fuel system, drain engine of fuel. Run the engine until it stops from lack of fuel.
2. Float assembly should be removed for easier maintenance. To remove the float assembly, disengage the hold-down straps (see parts breakdown pages 8 - 10) and lift engine/pump assembly up and away from the float.
3. While engine is still warm, drain oil from crankcase. Refill with oil.
4. Remove spark plug. Pour approximately .5 ounce/15ml of engine oil into cylinder and crank slowly to distribute oil. Replace spark plug.
5. Clean dirt and chaff from cylinder, blower housing, rotating screen, and muffler area.
6. Store the pump in a clean and dry area.

Important Warnings and Safeguards

WARNING:

Do Not Touch Hot Muffler: Contact may cause burns.

CAUTION:

Do Not Submerge Engine and/or Muffler: This may allow water to enter to engine and damage the pump.

CAUTION:

Do Not Fill Fuel Tank While The Engine is Hot: Potential fire Hazard.

WARNING:

Engine Exhaust From This Product Contains Chemicals Known, In Certain Quantities, To Cause; cancer, birth defects, or other reproductive harm.

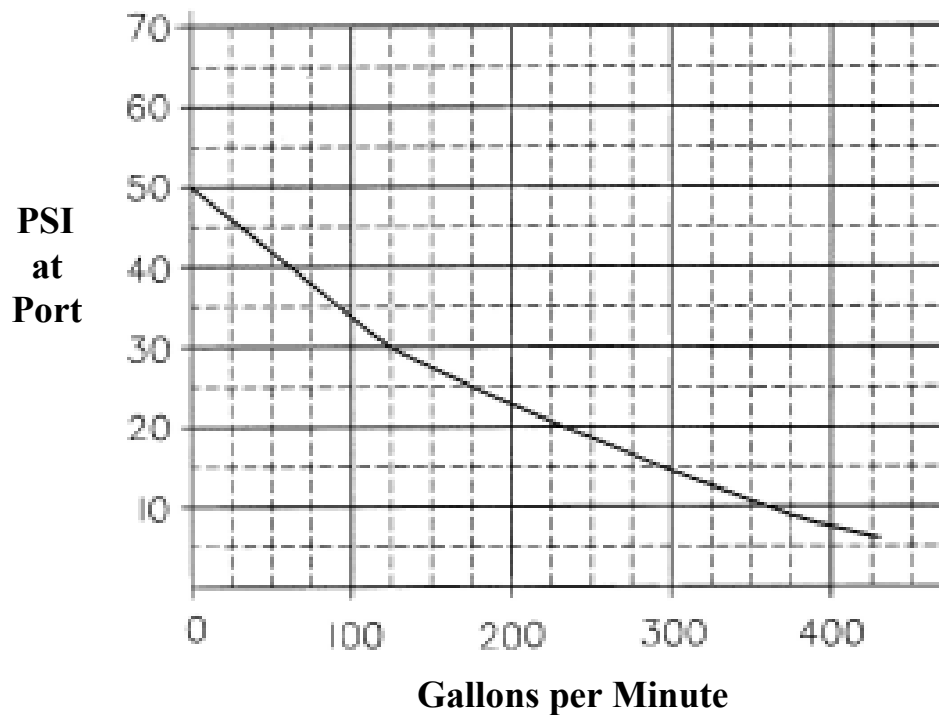
TROUBLESHOOTING

Symptom	Systematic order of Repair
Pump will not prime:	<ul style="list-style-type: none"> a. Check the weep hole in the endcap. It must be kept clear. b. Check that hose is not kinked c. Hose may have some flat, compressed areas. Squeeze these areas to open the hose and alleviate back pressure.
Unit will not pump properly:	<ul style="list-style-type: none"> a. Check the weep hole in the endcap. It must be kept clear. b. Check the intake for debris. c. Using hose smaller than 2.5" (63mm) diameter will reduce output. Verify hose diameter. d. If starting pump on shore, make sure idle is set low when placed in water. e. If pump does not prime while starting on shore, place pump in water prior to starting engine. f. Check engine speed. Throttle should be fully open. Engine speed should be 3600 rpm at no load.
Pump will not start:	<ul style="list-style-type: none"> a. Check spark plug wire. b. Check gas level and fuel line valve is open.
Contaminated oil:	<ul style="list-style-type: none"> a. Contact the party where you purchased your Chief Pump for repair instructions if the engine oil is abnormal in appearance.
Pump no longer achieves manufacturers performance specifications:	<ul style="list-style-type: none"> a. Remove discharge flanges and or end plug. Remove bottom housing bolts and separate bottom housing from top housing. (you will need to pry apart silicone seal) b. Inspect impeller, bottom and top housing for wear or damage. Replace as needed. Note: Be sure to inspect top housing if impeller has significant wear.

Chief 10.5HP Pump Specifications

Dimensions	30" x 30" x 23" (76cm x 76cm x 58.5cm)
Shipping Weight	In box fully assembled: 131 lbs (59.4 Kilograms)
Net Weight	118 lbs (53.5 Kilograms) Pump: 86 lbs (39.0 Kilograms) Float: 32 lbs (14.5 Kilograms)
Engine Capacities	Gas tank 3 Quarts (2.8 Liters) Oil 46 - 48 oz. (1.36 - 1.40 Liters)
Engine Specifications	Briggs & Stratton Power Built Model 210000 10.5HP, 3600 RPM @ no load 21.01 cubic inch / 344 cc Single cylinder Overhead Valve (OHV) Design Advanced Anti-Vibration System (AVS™)
Pump Body	.5" / 1.2cm cast aluminum alloy. Built-in suction guard and skids.
Discharge	2.5" NST male / ISO 228/1-G21/2A Parallel Pipe 3" / 8mm hose diameter recommended for full output. 2.5" / 6.5mm minimum.
Float	High density polyethylene shell filled with closed-cell polyurethane foam.
Pump Performance	Chief - 1 Discharge (See Page 7 for Pump Curve) Max head pressure 50 psi (3.4 Bars) Max. head 115 feet (35 meters) Max. output 425 GPM (1609 LPM) @ 7 psi
Lubricant and Fuel	See page 3. #1 Note: Use high quality detergent oil classified for service, SF, SG, SH, SJ or higher. DO NOT USE SPECIAL ADDITIVES

Chief 10.5HP Pump Curve



Optional Accessories

#	Description	Part #
1	Intake screen for stopping small debris: 1/8" dia. openings in screen	12-0025
2	25', (7.62 m), Hose assembly	F-203-H25
3	50', (15.24 m), Hose assembly	F-203-H50
4	100', (30.48 m), Hose assembly	F-203-H100
5	2.5" NST x 3" NPSH Adaptor	46-0021

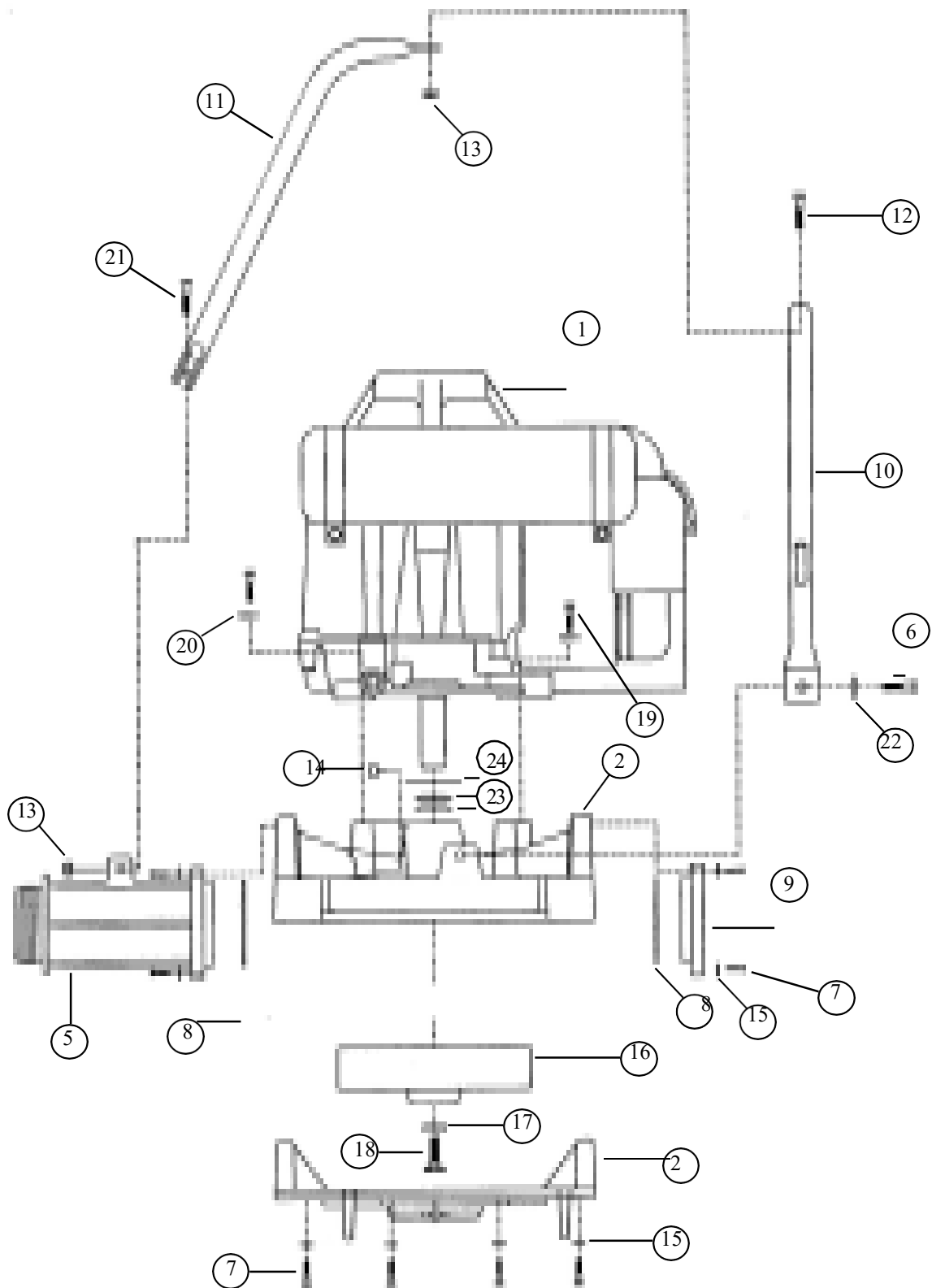
Standard engine has a one (1) year limited warranty on entire engine.

See back page for Briggs & Stratton warranties

OTTERBINE® CHIEF 10.5HP PORTABLE FLOATING PUMP
REPLACEMENT PARTS LIST

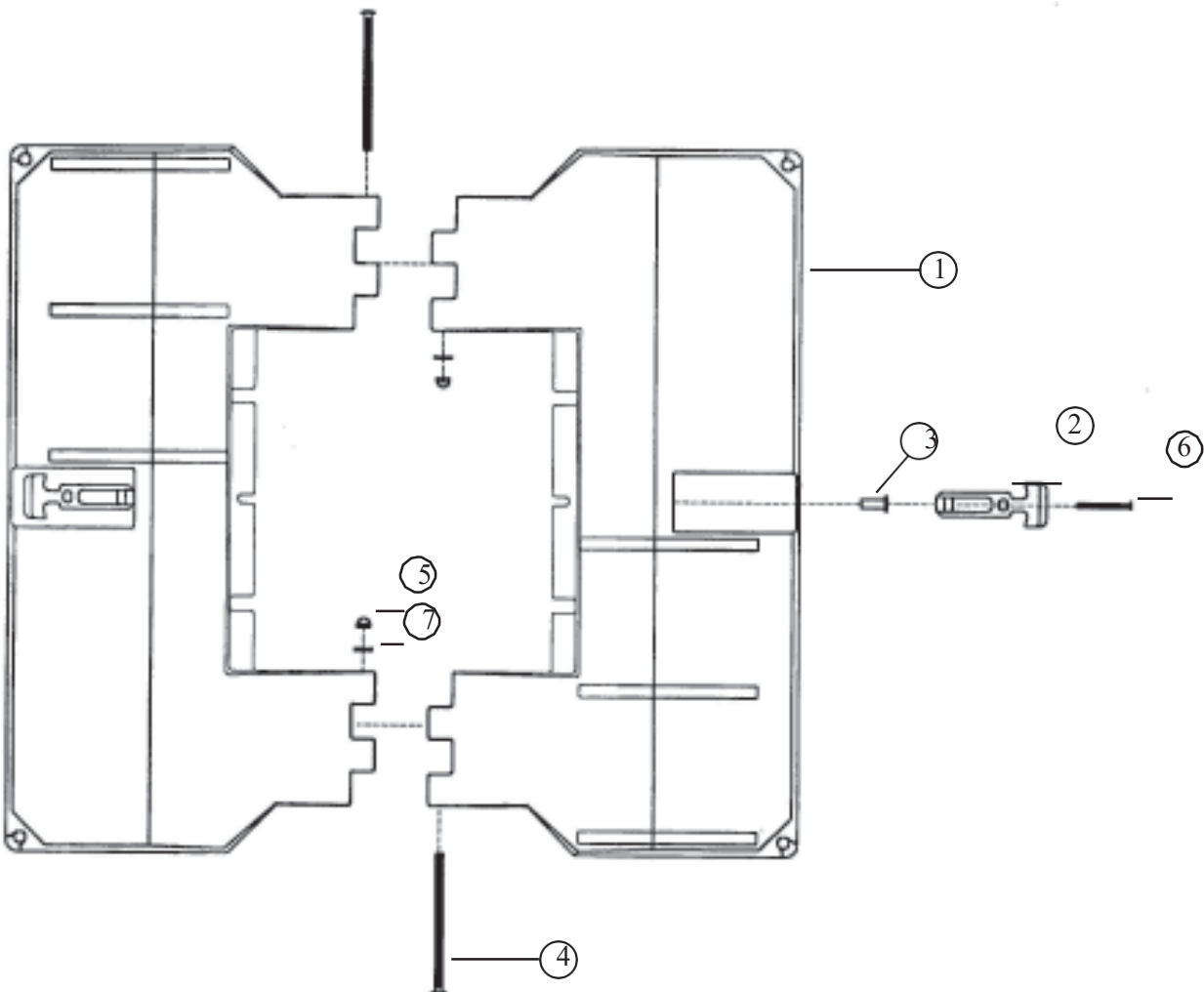
DIAGRAM NUMBER	PART DESCRIPTION	QTY	OTTERBINE PART NUMBER
1	Engine, Briggs & Stratton, 10.5HP	1	30-0026-011
2	Lower & Upper Housing Assembly	1	10-0077
5	Discharge Flange	1	41-0009
6	Hex Bolt, S/S, 5/16"-18 x 1"	2	MP2008
7	Hex Bolt, S/S, 1/4"-20 x 1"	16	EP5100
8	Discharge/Plug Gasket	2	EP2503
9	End Cap/Plug	1	41-0010-001
10	Handle, (with keepers)	1	60-0009
11	Handle Brace	1	60-0010
12	Hex Bolt, S/S, 1/4"-20 x 1.25"	1	101-001
13	Nylon Lock Nut, S/S, 1/4"-20	2	C2-112
14	Square Nut, S/S, 5/16"-18	2	26-0002
15	Internal Star Washer, S/S, 1/4"	16	927-001
16	Impeller, 10.5HP High Volume	1	41-0135
17	Lock Washer, S/S, 7/16"	1	EP6401
18	Hex Bolt, S/S, 7/16"-20 x 1.5"	1	22-0030
19	Hex Bolt, Plated, 5/16"-18 x 1.25"	4	EP5001
20	Internal Star Washer, S/S, 5/16"	4	927-005
21	Hex Bolt, S/S, 1/4"-20 x 7/8"	1	101-016
22	Fender Washer, S/S, 5/16"	2	28-0008
23	Lip Seal, Self-Adjusting	2	49-0025
24	Engine Gasket	1	49-0029
25	Silicone Grease (not shown) - applied between lip seals	---	48-0014

Chief 10.5HP Parts Breakdown **Pumping Assembly**



Chief Parts Breakdown **Float Assembly (P/N 01-0002-002)**

Item Number	Description	Qty	Part Number
1	Float, 2 sections	2	42-0035
2	Flex Draw Latch	2	46-0015
3	Well Nut, 10 - 32	4	21-0010
4	Carriage Bolt, S/S, 5/16" - 18 x 5 3/4"	2	22-0008
5	Cap Nut, Brass, 5/16" - 18	2	BP2811
6	Phillips Screw, S/S, 10 - 32 x 3/4"	4	24-0003
7	Flat Washer, S/S, 5/16"	2	28-0018



LIMITED WARRANTY

Briggs & Stratton warrants that, during the warranty period specified below, it will repair or replace, free of charge, any part that is defective in material or workmanship or both. Transportation charges on product submitted for repair or replacement under this warranty must be borne by purchaser. This warranty is effective for and is subject to the time periods and conditions stated below. For warranty service, find the nearest Authorized Service Dealer in our dealer locator map at BRIGGSandSTRATTON.COM. The purchaser must contact the Authorized Service Dealer, and then make the product available to the Authorized Service Dealer for inspection and testing.

There is no other express warranty. Implied warranties, including those of merchantability and fitness for a particular purpose, are limited to the warranty period listed below, or to the extent permitted by law. Liability for incidental or consequential damages are excluded to the extent exclusion is permitted by law. Some states or countries do not allow limitations on how long an implied warranty lasts, and some states or countries do not allow the exclusion or limitation of incidental or consequential damages, so the above limitation and exclusion may not apply to you. This warranty gives you specific legal rights and you may also have other rights which vary from state to state and country to country. **

STANDARD WARRANTY TERMS*†

Brand/Product Type	Consumer Use	Commercial Use
Vanguard [‡]	3 years	3 years
Commercial Turf Series	2 years	2 years
Engines Featuring Dura-Bore Cast Iron Sleeve	2 years	1 year
All Other Briggs & Stratton Engines	2 years	90 days

* These are our standard warranty terms, but occasionally there may be additional warranty coverage that was not determined at time of publication. For a listing of current warranty terms for your engine, go to BRIGGSandSTRATTON.COM or contact your Briggs & Stratton authorized Service Dealer.

** In Australia, Our goods come with guarantees that cannot be excluded under the Australian Consumer Law. You are entitled to a replacement or refund for a major failure and for compensation for any other reasonably foreseeable loss or damage. You are also entitled to have the goods repaired or replaced if the goods fail to be of acceptable quality and the failure does not amount to a major failure. For warranty service, find the nearest Authorized Service Dealer in our dealer locator map at BRIGGSandSTRATTON.COM, or by calling 1300 274 447, or by emailing or writing to salesenquiries@briggsandstratton.com.au, Briggs & Stratton Australia Pty Ltd, 1 Moorebank Avenue, Moorebank, NSW, Australia, 2170.

† There is no warranty for engines on equipment used for prime power in place of a utility or for standby generators used for commercial purposes. Engines used in competitive racing or on commercial or rental tracks are not warranted.

‡ Vanguard installed on standby generators: 2 years consumer use, no warranty commercial use. Vanguard installed on utility vehicles: 2 years consumer use, 2 years commercial use. Vanguard 3-cylinder liquid cooled: see Briggs & Stratton 3/LC Engine Warranty Policy.

The warranty period begins on the date of purchase by the first retail or commercial consumer. "Consumer use" means personal residential household use by a retail consumer. "Commercial use" means all other uses, including use for commercial, income producing or rental purposes. Once an engine has experienced commercial use, it shall thereafter be considered as a commercial use engine for purposes of this warranty.

Save your proof of purchase receipt. If you do not provide proof of the initial purchase date at the time warranty service is requested, the manufacturing date of the product will be used to determine the warranty period. Product registration is not required to obtain warranty service on Briggs & Stratton products.

About Your Warranty

This limited warranty covers engine-related material and/or workmanship issues only, and not replacement or refund of the equipment to which the engine may be mounted. Routine maintenance, tune-ups, adjustments, or normal wear and tear are not covered under this warranty. Similarly, warranty is not applicable if the engine has been altered or modified or if the engine serial number has been defaced or removed. This warranty does not include used, reconditioned, second-hand, or demonstration equipment or engines. This warranty does not cover engine damage or performance problems caused by:

- 1 The use of parts that are not original Briggs & Stratton parts;
- 2 Operating the engine with insufficient, contaminated, or an incorrect grade of lubricating oil;
- 3 The use of contaminated or stale fuel, gasoline formulated with ethanol greater than 10%, or the use of alternative fuels such as liquefied petroleum or natural gas on engines not originally designed/manufactured by Briggs & Stratton to operate on such fuels;
- 4 Dirt which entered the engine because of improper air cleaner maintenance or re-assembly;

- 5 Striking an object with the cutter blade of a rotary lawn mower, loose or improperly installed blade adapters, impellers, or other crankshaft coupled devices, or excessive v-belt tightness;
- 6 Associated parts or assemblies such as clutches, transmissions, equipment controls, etc., which are not supplied by Briggs & Stratton;
- 7 Overheating due to grass clippings, dirt and debris, or rodent nests which plug or clog the cooling fins or flywheel area, or by operating the engine without sufficient ventilation;
- 8 Excessive vibration due to over-speeding, loose engine mounting, loose or unbalanced cutter blades or impellers, or improper coupling of equipment components to the crankshaft;
- 9 Misuse, lack of routine maintenance, shipping, handling, or warehousing of equipment, or improper engine installation.

Warranty service is available only through Briggs & Stratton Authorized Service Dealers. Locate your nearest Authorized Service Dealer in our dealer locator map at BRIGGSandSTRATTON.COM or by calling 1-800-233-3723 (in USA).

NOTE: This is a reprint of Briggs & Stratton Corporation printed warranty. The engine installed on this pump is warranted by Briggs & Stratton Corporation.

OTTERBINE® PORTABLE PUMP LIMITED ONE YEAR WARRANTY

Otterbine Portable Pump Serial# _____

Please note that this limited one year warranty applies to all components of the OTTERBINE PORTABLE PUMP except for the gasoline engine, which is warranted separately and exclusively by the manufacturer, Briggs & Stratton Company. See accompanying warranty information provided by Briggs & Stratton.

WARRANTY: BAREBO, INC. located at 3840 Main Road East, Emmaus, PA 18049 USA, hereby warrants, subject to the conditions herein below set forth, that should this OTTERBINE PORTABLE PUMP prove defective by reason of improper workmanship or materials at any time during one (1) year of date of delivery to the Purchaser at retail only that BAREBO will repair or replace the said OTTERBINE PORTABLE PUMP as may be necessary to restore it to satisfactory operating condition, without any charge for materials or labor necessarily incident to such repair or replacement, provided that:

- (a) The enclosed Warranty Registration Card must be mailed to BAREBO within fifteen (15) days of original receipt by the Purchaser at retail.
- (b) The OTTERBINE PORTABLE PUMP must be delivered or shipped, prepaid, in its original container or a container offering an equal degree of protection, to BAREBO or a facility authorized by BAREBO to render the said repair or replacement services, or, if purchased from an authorized OTTERBINE dealer, to such dealer:
- (c) The OTTERBINE PORTABLE PUMP must not have been altered, repaired, or serviced, by anyone other than BAREBO, a service facility authorized by BAREBO to render such service, or by an authorized OTTERBINE dealer, and the serial number of the OTTERBINE PORTABLE PUMP must not have been removed or altered; and
- (d) The OTTERBINE PORTABLE PUMP must not have been subjected to lightning strikes, vandalism, freezing-in, accident, misuse or abuse, and also installed, operated, and maintained in accordance with guidelines in the Owner's Manual shipped with this OTTERBINE PORTABLE PUMP.

No implied warranties of any kind by BAREBO in connection with this OTTERBINE PORTABLE PUMP and no other warranties, whether expressed or implied, including implied warranties of merchantability and fitness for a particular purpose, shall apply to this OTTERBINE PORTABLE PUMP.

Should this OTTERBINE PORTABLE PUMP prove defective in workmanship or material, the retail Purchaser's sole remedy shall be repair or replacement as is hereinabove expressly provided and, under no circumstances, shall BAREBO be liable for any loss, damage or injury, direct or consequential, arising out of the use of, or inability to use, this OTTERBINE PORTABLE PUMP, including but not limited to retail Purchaser's cost, loss of profits, goodwill, damages due to loss of product or interruption of service, or personal injuries to Purchaser or any person.